

# SUNDERLAND FOUNDATION CAMPUS

2014-2015



**University of  
Sunderland**

**FOUNDATION CAMPUS**

Guaranteed progression to one of the UK's  
**leading modern universities**

- 02 Welcome to Sunderland Foundation Campus
- 04 The University campus and surrounding area
- 06 The best choice for your future career - which degree?
- 10 Your route to a university degree
- 12 Our programmes
- 19 Living in Sunderland - guide to accommodation
- 22 Next steps
- 24 Application form



Foundation Campus is proud to work in partnership with the University of Sunderland to offer high-quality university preparation programmes for international students on the University campus.

**Find out more:**  
www.foundationcampus.com

**Facebook:**  
www.facebook.com/foundationcampus

# The University of SUNDERLAND

The University of Sunderland is an innovative, forward-thinking university with high standards of teaching, research and support that sits at the heart of one of the UK's most up-and-coming cities. It has strong links with industry and business, and works closely with some of the world's leading companies.

The two campuses – one in the city and one on the coast – are perfectly placed to ensure a life-changing student experience.

"I chose this course because I know it has a great reputation. My English has improved greatly since I started at Foundation Campus. It is a small city, perfect for studying but still close enough to other cities if I want to explore and go out with friends."

Raad Saqr Almutiry

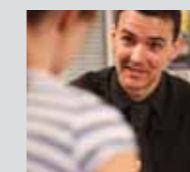
**STUDIED**  
Undergraduate Foundation Programme – Engineering

**PROGRESSED TO**  
BA (Hons) Mechanical Engineering



## Teaching and research excellence

- Shortlisted for University of the Year (Times Higher Education Awards 2012).
- Best new university in North East England (Guardian University Guide 2012).
- World-leading research in 10 areas – computer science, pharmacy, environment, education, media, English, history, automotive, art & design and tourism (latest Research Assessment Exercise).



## Best student support

- Sunderland is committed to providing students with the best support, including The Gateway – a 'one-stop shop' for student services and information, dedicated international student support team, counselling, disability, health and wellbeing, chaplaincy, childcare and careers services.
- 96% of students rated the library services as 'Very good' (Student Experience Survey 2010).
- 99% of students rated student support centre The Gateway highly (Student Experience Survey 2010).



## Career focus

- The University places great emphasis on graduate employability.
- The University works with some of the world's largest organisations, such as Microsoft, Yahoo!, Nissan, British Telecom (BT), Sunderland Football Club, Procter & Gamble, GlaxoSmithKline and Pfizer.
- The Careers and Employability Service helps students and graduates to make career decisions, develop skills and become effective applicants.



## First-class facilities

- Among the best in the UK - £130m has been invested in the two campuses in recent years.
- Sir Tom Cowie campus at St Peter's voted one of the top four campuses in the UK with the "wow factor", by CABE.
- CitySpace, the sports and recreation facility at the heart of City campus, houses a six-badminton-court sports hall, 70-station Fitness Suite, and was a pre-Olympic training provider for team Grenada prior to the 2012 London Olympics.
- The new £8.5m Sciences Complex allows students access to some of best higher education facilities in the UK.
- The Media Centre is among the best in the UK, with two TV studios, four digital radio stations, a 200-seater cinema and a host of video and journalism suites with the very latest software.



## Excellent value for money

- Competitive tuition fees with £1,500 scholarships for all international students.
- Beautiful coastal city and in the top 10 least expensive places to study in the UK.
- Competitively priced, high-quality accommodation.



## City by the sea

- Situated in North East England, with Newcastle, Durham and Northumberland on the doorstep.
- Sunderland has the added advantage of being a city by the sea in one of the most beautiful parts of the UK.
- A city with great sporting traditions and home to English Premiership League side, Sunderland Football Club.
- Sunderland is in the 'Top 10' safest Universities in England and Wales (official police data 2012).



1



2



3



4

# The University campus and surrounding area SUNDERLAND

The two outstanding campuses – one in the city centre and one by the sea – undoubtedly offer some of the best university facilities in the UK, in one of the most beautiful parts of the UK, with Newcastle, Durham and Edinburgh nearby.



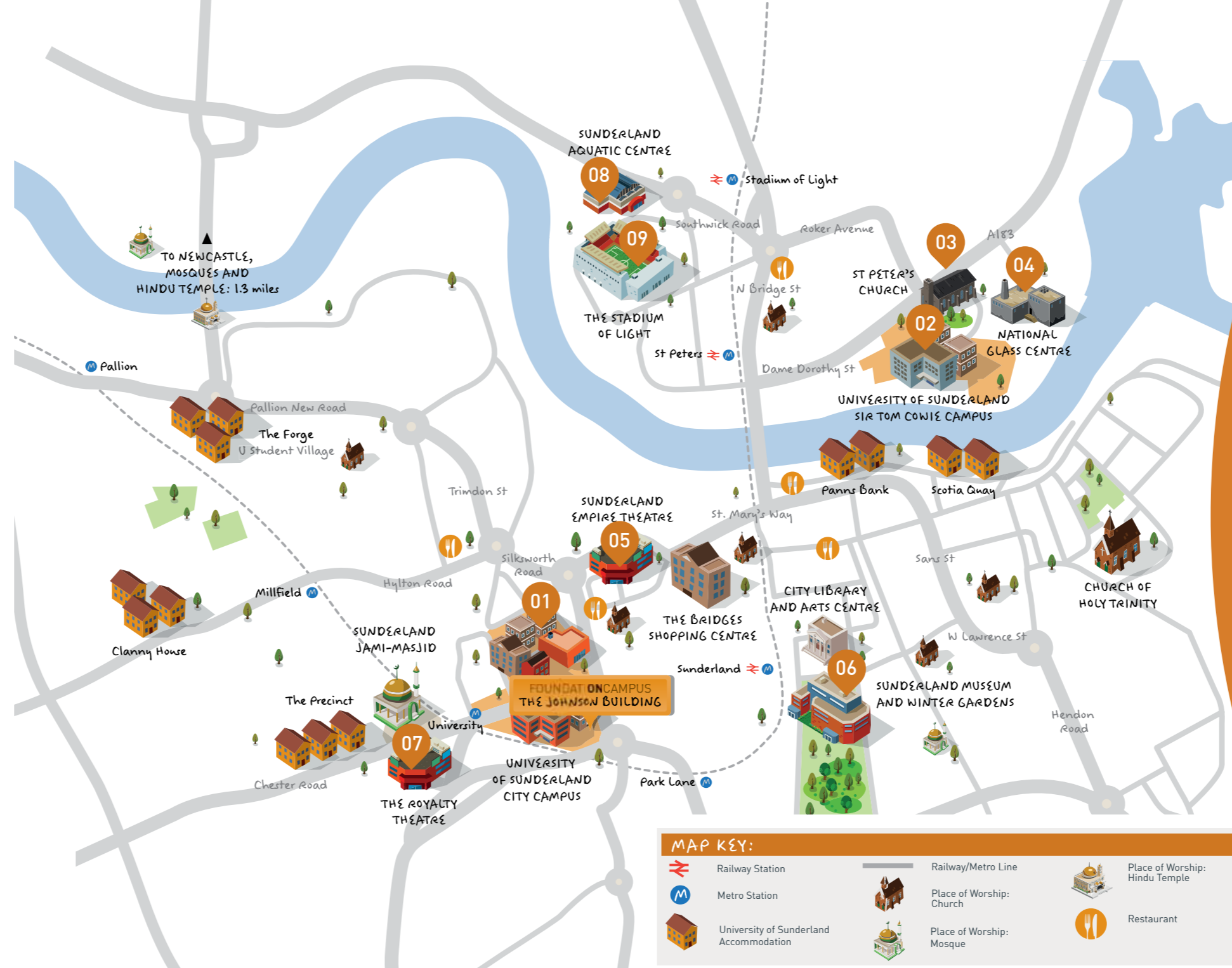
“Sunderland is a calm, relaxed city. As a student you are close to everything you need and have plenty of time to study.”

Husain Jaafar Abbas Ali Khalaf

**STUDIED**  
Undergraduate Foundation Programme – Business

**PROGRESSED TO**  
BA (Hons) Accounting and Finance

All distances are given from FoundationCampus



- 1 Sunderland FoundationCampus at the City campus
- 2 Riverside campus
- 3 St Peter's Church
- 4 Glass Centre
- 5 Empire Theatre
- 6 Museum and Winter Gardens
- 7 Royalty Theatre
- 8 Aquatic Centre
- 9 Stadium of Light



5 0.2 miles | 5 mins | 2 mins



6 0.5 miles | 10 mins | 3 mins



7 0.2 miles | 5 mins | 2 mins



8 1.2 miles | 25 mins | 8 mins



9 1.2 miles | 8 mins | 21 mins



# DEGREES

## Undergraduate

- BA (Hons) Accounting and Finance
- BA (Hons) Business and Enterprise Management
- BA (Hons) Business and Financial Management
- BA (Hons) Business and Human Resource Management
- BA (Hons) Business and Management
- BA (Hons) Business and Marketing Management
- BA (Hons) Events Management
- BA (Hons) International Tourism and Hospitality Management
- BSc (Hons) Tourism Management

## Postgraduate

- MBA Finance
- MBA Hospitality Management
- MBA Human Resource Management
- MSc Human Resource Management
- MA International Management
- MBA Innovation and Entrepreneurship
- MA Marketing
- MBA Marketing
- MBA
- MBM Master of Business Management
- MBA Supply Chain Management

Progression to Year 2 of these degrees is available through the International Diploma Programme.

## The best choice for your future career WHICH DEGREE?

### Business, Economics, Finance and Management

- The Business School is ranked 14th best in the UK (The Guardian 2011), and number one in the North East (Guardian University Guide 2012).
- The Business School has accreditation with the Chartered Management Institute (CMI), with many of their undergraduate and postgraduate programmes approved to meet the level 5 and level 7 management standards.
- BA (Hons) Accounting and Finance has nine exemptions from ACCA.
- Human Resource Management degrees (both undergraduate and postgraduate) are accredited with CIPD (Chartered Institute of Personnel and Development).
- BA (Hons) Business and Marketing Management has dual award status from the Chartered Institute of Marketing (CIM).
- There are sandwich programmes available on many Business degrees and students have completed placements at companies such as Nissan, IBM, British Telecom and PricewaterhouseCoopers.
- Tourism is ranked 4th best in the UK (Guardian University Guide 2012) and recognised for 'World leading' research (RAE).
- Tourism programmes include optional field trips and recent visits have included Barcelona, Prague and New York.

### Law, Humanities and Social Sciences

- The Law School has been named "Best in the UK for Teaching Excellence" (Sunday Times University Guide 2012), and is first in the UK for student satisfaction; the only UK university law school to achieve 100% student satisfaction (The Guardian 2011).
- The University is ranked number one out of 108 Psychology departments in the UK for Teaching Excellence (Sunday Times University Guide 2012), and is accredited by the British Psychological Society.
- BSc (Hons) Psychology is accredited as conferring eligibility for Graduate Basis for Chartered Membership (GBC) with the British Psychological Society, provided the minimum standard of Second Class Honours is achieved. This is the first step towards becoming a Chartered Psychologist.
- The University undertakes 'World leading' research in Media (latest RAE), and has the largest Media department in North East England.
- The University of Sunderland's journalism courses are accredited by the NCTJ (National Council for the Training of Journalists) and Broadcast Journalism is accredited by the BJTC (Broadcast Journalism Training Council).
- Public Relations at Sunderland is accredited by the CIPR (Chartered Institute of Public Relations).
- The University of Sunderland's David Puttnam Media Centre provides students with outstanding television and video production facilities and allows students to experience real-life work situations during their study.
- There are strong links to employers and an active work experience programme, complemented by master classes and workshops.



# DEGREES

## Undergraduate

- BA (Hons) Broadcast Media Production
- BA (Hons) Broadcast Journalism
- BA (Hons) Childhood Studies
- BA (Hons) Criminology
- BA (Hons) Digital Film Production
- BA (Hons) English
- BA (Hons) English and Creative Writing
- BA (Hons) English Language and Literature
- BA (Hons) Fashion Journalism
- BA (Hons) Film and Media Production
- BA (Hons) History
- BA (Hons) Journalism
- BA (Hons) Magazine Journalism
- BA (Hons) Mass Communications
- BA (Hons) Media, Culture and Communication
- BA (Hons) Sports Journalism
- BA (Hons) Public Relations
- BA (Hons) Sociology
- LLB (Hons) Law

## Postgraduate

- LLM Criminal Law and Procedure
- LLM Human Rights
- MA Education\*
- MA English
- MA Journalism\*
- MA Magazine Journalism\*
- MA Media Production (Film and Television)
- MA Public Relations\*
- MA Radio\*
- MA Special Needs and Inclusive Education
- MA Sports Journalism\*
- MA Teaching English to Speakers of Other Languages (TESOL)

\* You will need higher grades for progression to these degrees. Please visit [www.foundationcampus.com](http://www.foundationcampus.com) for further details.

# DEGREES

## Undergraduate:

- BA (Hons) Business Computing
- BSc (Hons) Computing
- BSc (Hons) Computer Forensics
- BSc (Hons) Computer Science
- BSc (Hons) Games Software Development
- BSc (Hons) Information Communication Technology
- BSc (Hons) Network Computing
- BEng (Hons) Automotive Engineering
- BEng (Hons) Electronic and Electrical Engineering
- BEng (Hons) Mechanical Engineering

## Postgraduate:

- MSc Computing
- MSc Engineering Management
- MSc Information Technology Management
- MSc Network Systems
- MSc Project Management
- MSc Telecommunications Engineering

The best choice for your future career  
**WHICH DEGREE**



## Computing, Engineering and Sciences

- 'World leading' research in Computer Science (latest RAE).
- Partnerships with Microsoft, Sony, Sage, British Airways and BT.
- These partnerships allow students to experiment with cutting-edge and current applications and many provide modern hardware and software for our courses, including Microsoft and Sony gaming console technologies and TIM (Blackberry) mobile smartphone and tablets.
- Leading partner in Sunderland Software City initiative.
- BEng (Hons) Automotive Engineering, Electronic and Electrical Engineering, and Mechanical Engineering accredited by the Institution of Engineering and Technology (IET) as partially fulfilling the educational requirements for Chartered Engineering (CEng) status, which is the highest level attainable for any undergraduate programme.
- The Engineering department enjoys close collaboration with a number of industrial partners, including Nissan Motor Manufacturing (UK) Ltd, Fabricom, ThyssenKrupp Automotive, Tallent Chassis Ltd and Nicholson McLaren. Students design, build, test and race a 600cc single-seat racing car against other universities in the Formula Student contest. Nissan Motor Manufacturing (UK) Ltd supports our Formula Student team, allowing the University to use their test track and providing car parts and engine development.

## Life Sciences

- The Pharmacy School is ranked 6th in the UK (The Guardian League Table 2013), with more than 90 years' experience and 'World leading' research in Pharmacy (RAE).
- The MPharm degree is accredited by the General Pharmaceutical Council (GPhC), the regulatory body of the pharmacy profession.
- 20 years of working with GlaxoSmithKline and Pfizer has funded research projects at Sunderland for over 10 years.
- Excellent opportunities for outdoor pursuits and water sports due to the natural, coastal location and Sunderland's new £20m Aquatic Centre with its 50m pool.
- The University Chancellor is former Olympic athlete Steve Cram, which gives Sunderland excellent links to world-class athletes. In 2010, four-time Olympic Champion Michael Johnson received an honorary Doctorate from the University for his 'outstanding contribution and ambassadorial role' in athletics.



Stevy Lethicia Kuimi

STUDIED  
Undergraduate Foundation Programme – Engineering

PROGRESSED TO  
BEng Electronic Engineering

"I was recommended Sunderland Foundation Campus because of the quality of degrees I could progress onto at the University of Sunderland. I decided to come to the UK because there are better opportunities to study. We have great facilities, and the University is adapting and renewing all the time."

# DEGREES

## Undergraduate

- BSc (Hons) Biomedical Science
- BSc (Hons) BioPharmaceutical Science
- BSc (Hons) Public Health
- BSc (Hons) Exercise, Health and Fitness
- MPharm Pharmacy\* (4-year Master's)
- BSc (Hons) Physiological Sciences
- BSc (Hons) Psychology
- BSc (Hons) Psychology with Counselling
- BA (Hons) Sports Development
- BSc (Hons) Sports and Exercise Sciences
- BSc (Hons) Sports Coaching

## Postgraduate

- MSc Public Health
- MSc Drug Discovery and Development
- MSc Environment, Health and Safety (IOSH Accredited)
- MSc Medicine Management
- MSc Psychology
- MSc Sports and Exercise Sciences

\* The number of places available to study this degree, and the Undergraduate Foundation Programme leading to this degree, are limited. Students will need higher grades for progression to this degree. Please visit [www.foundationcampus.com](http://www.foundationcampus.com) for further details.

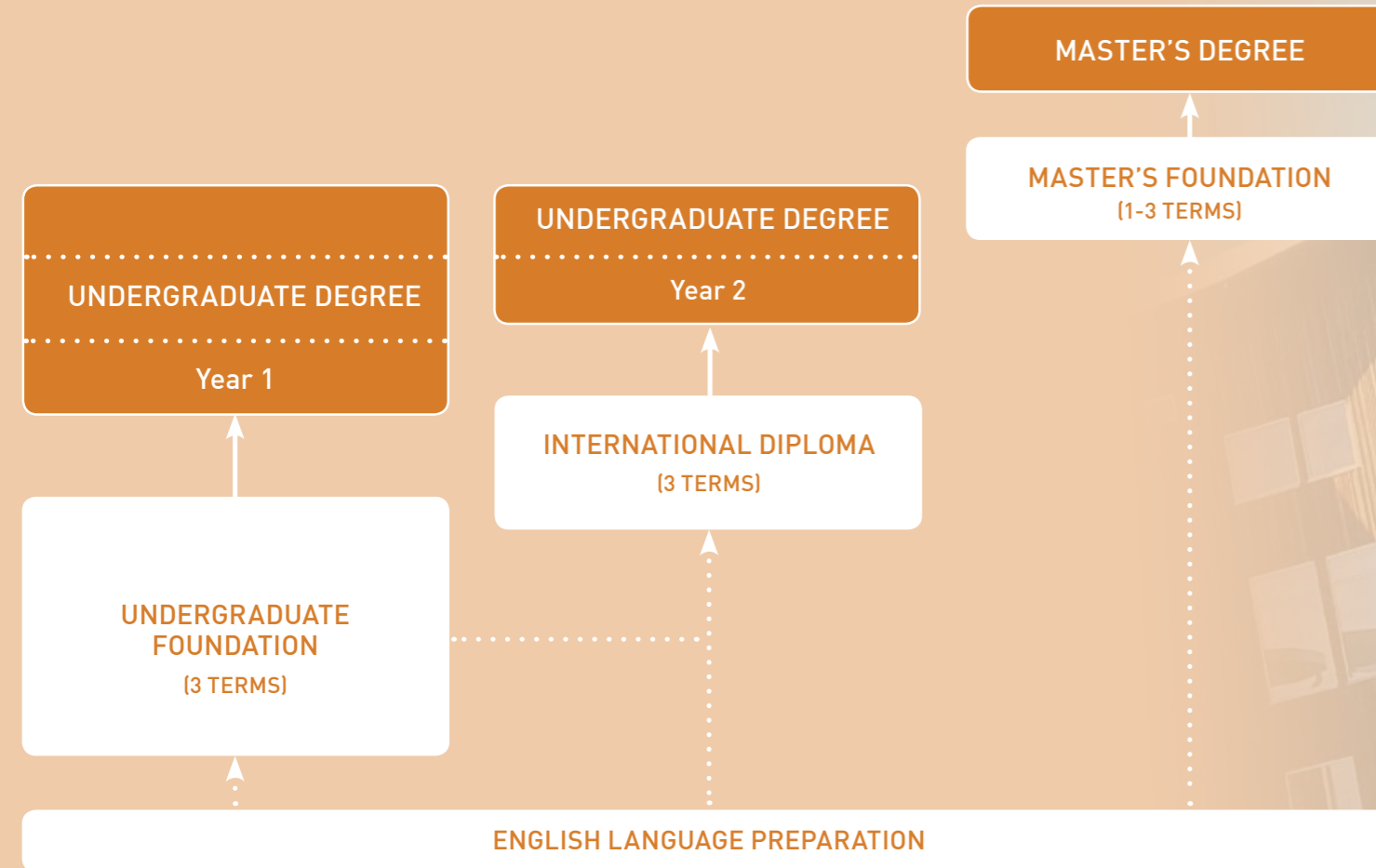


# Your route to a UNIVERSITY DEGREE

- University of Sunderland degree
- Sunderland FoundationCampus programme

## Undergraduate pathways

## Master's pathway



# Studying with FoundationCampus

### Guaranteed progression

Sunderland FoundationCampus offers guaranteed progression\* to a wide range of undergraduate and Master's degree programmes at the University of Sunderland on successful completion of our Foundation and Diploma programmes.

### Outstanding teaching and support

- Through every step of your journey with us, you will be supported by highly qualified teachers and support staff, both in and outside the classroom.
- Your personal tutor will meet with you regularly to ensure you are on track to pass the programme and progress to your chosen degree.
- Your personal tutor is also there to help you with any issues you might have inside or outside the classroom.

### Quality assured

Sunderland FoundationCampus is reviewed regularly by the Quality Assurance Agency (QAA), who is responsible for maintaining standards across the United Kingdom university system.

### A proven track record of success

- FoundationCampus is part of Cambridge Education Group, the UK's leading university pathway provider since 1952.
- Cambridge Education Group was the first private institution to offer university Foundation programmes in the UK in 1985, and successfully prepares hundreds of students for the UK's top universities every year.
- In 2013, 92% of students who successfully completed a FoundationCampus programme progressed to university.

### Part of the University from day one

- The FoundationCampus centre is located at the heart of the City Campus, close to all the University's facilities.
- You will receive a University student card, and with it you will have access to all the University's facilities, clubs and societies while studying on the Foundation programme.
- You will meet your course leader at the University before you start your degree, and have the opportunity to try out some of the excellent facilities.

"My English improved a lot and it has given me a lot of confidence, I really wanted to improve my language so that I can communicate well, which will be vital for my career."

Chung Yan

STUDIED  
Undergraduate Foundation Programme – Business

PROGRESSED TO  
BSc (Hons) International Tourism and Hospitality Management



\*Guaranteed progression is subject to meeting the specified entry criteria.

## Programme details

**Length of programme<sup>2</sup>:**  
3 terms

**English level:**  
From 4.5 IELTS or equivalent, with no single element less than 4.0, for 3-term UFP

**Academic requirements:**  
See page 22 for country-specific requirements

**Minimum age:**  
17+

**Hours per week:**  
Up to 25

**Examinations/coursework:**  
60%/40%

**Pass mark for guaranteed progression<sup>1</sup>:**  
• 40% in academic subjects<sup>3</sup>  
• 6.0 IELTS equivalent (internal assessment)

# UNDERGRADUATE Foundation Programme (UFP)

This programme gives guaranteed progression<sup>1</sup> to Year 1 of a wide range of undergraduate degrees or the International Diploma in Business & Management.

### Degree progression



| IELTS 4.0 | | IELTS 4.5 | | IELTS 5.0 | | IELTS 5.5 | | IELTS 6.0

The 1-term extended UFP is only available to start in June or September.

### Dates and fees

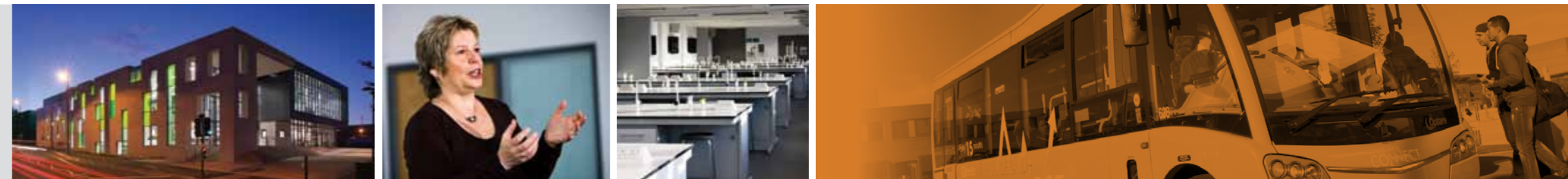
	Per term	Annually (3 terms)	Progressing to undergraduate degree starting in
29 September 2014 – 05 June 2015	£3,950	£11,850	Sept 2015
12 January 2015 – 26 August 2015	£3,950	£11,850	Sept 2015

All programmes are subject to a £100 registration fee and a £2,400 refundable deposit.

<sup>1</sup> Guaranteed progression is subject to meeting the specified entry criteria.

<sup>2</sup> Extended programmes are available if you do not yet have the required English language level. This programme lasts 4 terms and includes an English language module (ELM) followed by the 3 terms of Foundation required to apply for entry to the first year of your undergraduate degree. If your language level is below 4.0 IELTS or equivalent then we offer the English Language Preparation Programme (ELPP) – see page 18 for details or visit [www.foundationcampus.com](http://www.foundationcampus.com)

<sup>3</sup> This is the pass mark for progression to most degrees. Some degree programmes require additional interview/audition/portfolio and/or high pass mark as indicated on the degree list in this document.



### Pathways and academic modules

	Business, Economics, Finance & Management	Computing, Engineering & Sciences	Law, Humanities & Social Sciences	Life Sciences
Academic English Preparation & Study Skills	C	C	C	C
Biology				C
Business & Economics	•			
Chemistry		•		• (C)
Computing	•	•	•	•
Law	•		•	
Mathematics	•	C	•	•
Media			•	
Physics		•		•
Psychology			•	•
Sociology	•		•	

You take three academic modules plus Academic English Preparation & Study Skills  
C = Compulsory module • = Optional module (C) = Compulsory for BSc (Hons) BioPharmaceutical Science only

**Note:** The optional modules are subject to availability and you will be guided onto the best combination of academic modules for your intended degree when you arrive at Sunderland FoundationCampus.

### Who is this programme designed for?

This programme is designed to prepare international students, who have completed senior secondary education, for entry to undergraduate studies at the University of Sunderland. All students who successfully complete the UFP are guaranteed placement on a suitable programme of undergraduate study at the University of Sunderland. This programme is set at level 3, which is equivalent to A-level standard in the UK.

### How long will I study for?

The duration of the programme is one academic year (nine months). The year is divided into three terms of seven to eight teaching weeks, one reading week, and an examination week. You will undertake up to 25 hours of classroom-based study per week.

### What will I study?

This programme includes four core modules, taken by all students throughout the course. These modules are: English, and a choice of three academic subject modules according to the progression pathway.

The options available for your chosen pathway at Sunderland FoundationCampus are shown in the table on this page.

### How will I be assessed?

You will be assessed by a variety of methods during your time with us: the intention is that you have a chance to experience the full range of assessment methods that you might experience at university when you start your degree.

## Programme details

**Length of programme<sup>2</sup>:**  
3 terms

**English level:**  
From 5.5 IELTS or equivalent,  
for 3-term IDP

**Academic requirements:**  
See page 22 for country-specific requirements

**Minimum age:**  
18+

**Hours per week:**  
Up to 29

**Examinations/coursework:**  
60%/40%

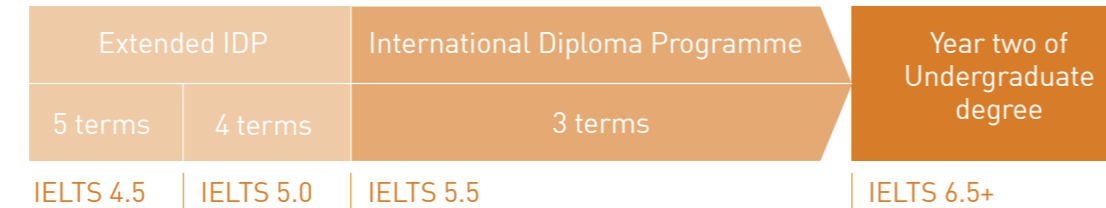
**For guaranteed progression<sup>1</sup>:**

- You must achieve a Pass in each academic module
- 6.5 IELTS equivalent (internal assessment)

# INTERNATIONAL Diploma Programme (IDP)

This programme gives guaranteed progression<sup>1</sup> to Year 2 of selected Business degrees.

### Degree progression



The 2-term extended IDP is only available to start in June.

### Dates and fees

	Per term	Annually (3 terms)	Progressing to undergraduate degree Year 2 starting in
29 September 2014 – 05 June 2015	£3,950	£11,850	Sept 2015
12 January 2015 – 26 August 2015	£3,950	£11,850	Sept 2015

All programmes are subject to a £100 registration fee and a £2,400 refundable deposit.

<sup>1</sup> Guaranteed progression is subject to meeting the specified entry criteria

<sup>2</sup> Extended programmes are available if you do not yet have the required English language level. These programmes last 4 or 5 terms and include English language modules (ELM) followed by the 3 terms of International Diploma required to apply for entry to the second year of your undergraduate degree.



### Programme content

All students study eight academic modules:

- Business Environment
- Managing Financial Resources and Decisions
- Organisations and Behaviour
- Marketing Principles
- Business Decision Making
- Marketing Intelligence
- Business Skills for Proposals and Pitches
- Study and Communication Skills for Business

Plus English for Academic Purposes

### Who is this programme designed for?

This programme is designed for international students who do not quite have the academic grades and/or English level to start the first year of an undergraduate degree at the University of Sunderland, but have a stronger profile than a UFP student. All students who successfully complete the IDP are guaranteed progression<sup>1</sup> to Year 2 of a business-related undergraduate degree at the University of Sunderland. This programme is set at level 4, and is equivalent to the first year of an undergraduate business degree in the UK.

### How long will I study for?

The duration of the programme is one academic year (nine months). The year is divided into three terms of seven to eight teaching weeks, one reading week, and an examination week. You will undertake up to 29 hours of classroom-based study per week.

### What will I study?

This programme includes nine core modules, taken by all students throughout the course. These modules are: English, and eight academic modules relating to business and management.

The programme content for the IDP at Sunderland Foundation Campus is shown on this page.

### How will I be assessed?

You will be assessed by a variety of methods during your time with us: the intention is that you have a chance to experience the full range of assessment methods that you might experience at university when you start the second year of your chosen degree.

Assessments will normally include coursework, essays, reports and other structured assignments, oral examination, and unseen written examinations.



“My career aspirations are to work for a large global organisation, which with this course I have every chance of going on to do.”

Ugochukwu Ani-Ikeyi Nnamani

**STUDIED**  
International Diploma Programme  
Business Management

**PROGRESSED TO**  
BA (Hons) Business and Human  
Resource Management





## Programme details

**Length of programme<sup>2</sup>:**  
1, 2 or 3 terms

**English level:**

- 3 terms – from 4.5 IELTS or equivalent, with no single element less than 4.0
- 2 terms – from 5.0 IELTS or equivalent, with no single element less than 4.5
- 1 term – from 5.5 IELTS or equivalent, with no single element less than 5.0

**Academic requirements:**  
See page 22 for country-specific requirements

**Minimum age:**  
21+

**Hours per week:**  
Up to 25

**Pass mark for guaranteed progression<sup>1</sup>:**

- 50%<sup>3</sup> in academic subjects
- 6.0 IELTS equivalent (internal assessment)

<sup>1</sup> Guaranteed progression is subject to meeting the specified entry criteria.

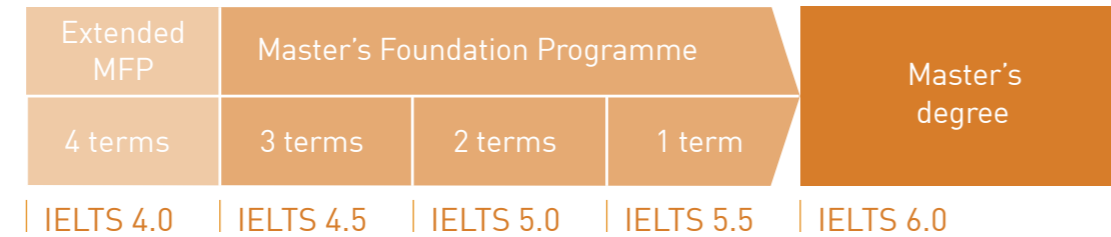
<sup>2</sup> Extended programmes are available if you do not yet have the required English language level. This programme lasts 4 terms and includes an English language module (ELM) followed by the 3 terms of Master's Foundation required to apply for entry to the first year of your Master's degree. If your language level is below 4.0 IELTS or equivalent then we offer the English Language Preparation Programme (ELPP) – see page 18 for details or visit [www.foundationcampus.com](http://www.foundationcampus.com)

<sup>3</sup> This is the pass mark for progression to most degrees. Some degrees require additional interview, audition/portfolio and/or higher pass mark as indicated on the degree list in this document.

# MASTER'S Foundation Programme (MFP)

The Master's Foundation Programme is available as a one, two or three-term programme. It offers you guaranteed progression<sup>1</sup> to a wide range of Master's degrees.

### Degree progression



The 1-term extended MFP is only available to start in June or September.

### Dates and fees

No. of terms	Programme dates	Tuition fees per programme	Progressing to Master's degree starting in
2	08 April 2014 – 23 August 2014	£7,700	Sept 2014
1	24 June 2014 – 23 August 2014	£3,850	Sept 2014
1	29 September 2014 – 12 December 2014	£3,950	Jan 2015
3	29 September 2014 – 05 June 2015	£11,850	Sept 2015
3	12 January 2015 – 26 August 2015	£11,850	Sept 2015
2	12 January 2015 – 05 June 2015	£7,900	Sept 2015
2	30 March 2015 – 26 August 2015	£7,900	Sept 2015
1	30 March 2015 – 05 June 2015	£3,950	Sept 2015
1	15 June 2015 – 26 August 2015	£3,950	Sept 2015

All programmes are subject to a £100 registration fee and a £2,400 refundable deposit.



### Who is this programme designed for?

This programme is designed to prepare international students for postgraduate study in the UK. The Master's Foundation will allow you to improve your English while learning the study skills and research methods that you will need during your Master's degree studies. Depending on the length of the programme you study, you may also study academic modules relating to your chosen progression route.

### How long will I study for?

Each term is divided into seven to eight teaching weeks, one reading week and an assessment week. You will undertake up to 25 hours of classroom-based study per week.

### What will I study?

#### 1 term

If you study this programme, you will study two compulsory units of research study skills, including a major project, plus English language.

#### 2 terms

If you study this programme, you will study two compulsory units of research project, personal and professional development, plus English language. You will also choose an additional academic subject unit, depending on your intended progression degree.

#### 3 terms

If you study this programme, you will study two compulsory units of a research project, personal and professional development, plus English language. You will also choose two additional academic subject units, depending on your intended progression degree, and availability.

### Academic subject units are arranged by pathway, and include:

#### Business

- Organisations and Behaviour
- Marketing Principles
- Financial Accounting and Reporting
- Business Strategy

#### Engineering

- Analytical Methods for Engineers
- Business Management Techniques for Engineers
- Mechanical Principles

#### Social Sciences

- Understanding the Learning Process
- Psychology of Human and Criminal Behaviour
- The Global Environment
- Contextual and Cultural Referencing in Art and Design

#### Life Sciences

- Analysis of Scientific Data and Information
- Pharmacological Principles of Drugs Actions
- Medicinal Chemistry

Modules are subject to availability and you will be guided onto the best combination of academic modules for your intended degree when you arrive at Sunderland Foundation Campus

### How will I be assessed?

Each module will have an assessment schedule, which will be completed by the end of the appropriate term, and will include formative and summative assignments and other assessment tasks. Assessments will be designed to demonstrate learning across the individual modules of the programme and to allow you to experience a wide range of the assessment methods used in UK postgraduate programmes.

Assessments will normally include coursework, essays, reports and other structured assignments, oral examination and unseen written examinations.

## Programme details

**Course length:**  
1 or 2 terms

**English level:**

- For UFP – from 3.5 IELTS or equivalent
- For MFP – from 3.5 IELTS or equivalent
- For IDP – from 4.5 IELTS or equivalent

**Academic requirements:**

See page 22 for country-specific requirements

If your language level is 4.0 IELTS or above (or equivalent) then Extended Foundation, International Diploma and Master's Foundation Programmes are available. These programmes last 4 or 5 terms and include English language modules (ELM) followed by the 3 terms of your main programme. See relevant programme section or website for more details.

**Minimum age:**

17+

**Hours per week:**

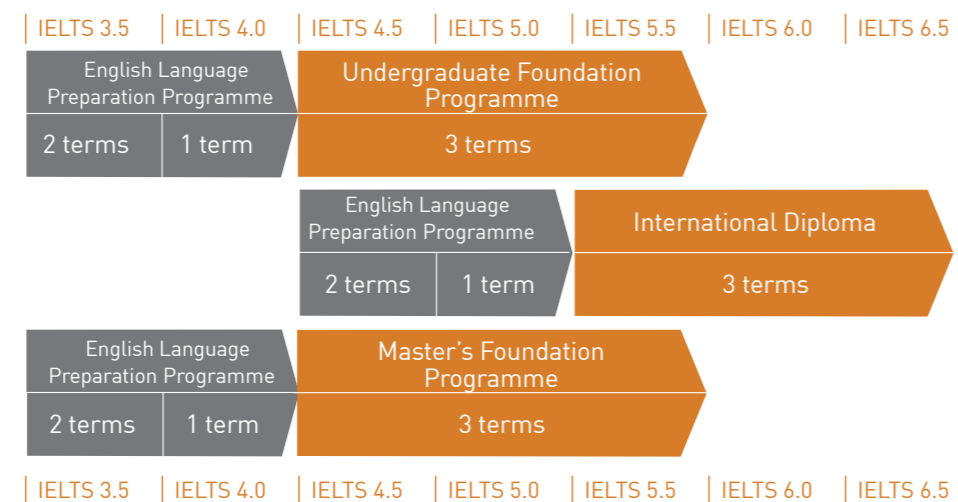
Up to 24

# ENGLISH LANGUAGE

## Preparation Programme (ELPP)

**Guaranteed progression<sup>1</sup> to the Undergraduate Foundation, International Diploma and Master's Foundation Programmes.**

### Degree progression



### Dates and fees

No. of terms	Term dates	Tuition fees per term	Progressing to
1	24 June 2014 – 23 August 2014	£3,850	Undergraduate Foundation or International Diploma or Master's Foundation
2	24 June 2014 – 12 December 2014	£3,850	
1	29 September 2014 – 12 December 2014	£3,950	Undergraduate Foundation or International Diploma or Master's Foundation
1	15 June 2015 – 26 August 2015		
2	15 June 2015 – 11 December 2015		

All programmes are subject to a £100 registration fee and a £2,400 refundable deposit.

### Programme content

Academic English skills including Grammar, Vocabulary, Reading, Writing, Speaking, Listening and exam preparation.

<sup>1</sup>Guaranteed progression is subject to meeting the specified entry criteria.

ELPP is subject to availability; please email [admissions@foundationcampus.com](mailto:admissions@foundationcampus.com) to find out the next available start dates.

## Living in SUNDERLAND

All FoundationCampus students are guaranteed safe and secure accommodation close to where they are studying.

The University has its own quality purpose-built accommodation, giving you the option of a single study-bedroom in a secure environment.

All accommodation is self-catered, with fully equipped kitchens. The accommodation also offers all-inclusive living, which includes heating, lighting and fuel costs in with the rent.

Rent for university accommodation is among the cheapest in the country. Prices per week range from £68 to £80 for a standard room, and £88 to £90 for en-suite rooms.

There is a free Campus Bus service for students, which picks you up from your halls of residence and takes you to either Campus. This service operates throughout the day. Students can also buy Travel Cards to use for the Metro at a reduced cost. For example, a Travel Card covering the city of Sunderland costs around £44 a year.



Accommodation guaranteed until 31 July

To help you budget for your time in Sunderland, here is an example of what you can expect to pay for some of the essentials of student life.

Average rent in University of Sunderland halls of residence	£69 per week
Internet access in halls	FREE
Personal possessions insurance included as part of the accommodation package	FREE
Campus Bus from halls to Campuses	FREE
Happy hour Italian restaurant meal	£5.45
Daily breakfast deal in CitySpace	£1.85
All-inclusive annual membership of the gym, including all fitness classes in CitySpace for students	£130
Cinema ticket (with SU card)	£5.25

When you progress to the University of Sunderland you can expect to pay between £7,000 and £8,500 per year in tuition fees, depending on your choice of degree. Please visit [www.sunderland.ac.uk](http://www.sunderland.ac.uk) for more information.

## Academic entry requirements

Undergraduate Foundation		International Diploma
Albania	Completion of high school education with Certificate of Maturity	Completion of high school education with Certificate of Maturity with good grades
Angola	Completion of Secondary School Certificate (Grade 12) with pass grades	Completion of Secondary School Certificate (Grade 12) with good grades
Armenia	Certificate of Secondary Education (Mijnakarg Yndhanur Krtoutian Attestat) with pass grades	Certificate of Secondary Education (Mijnakarg Yndhanur Krtoutian Attestat) with good grades
Azerbaijan	Certificate of Secondary Education (Attestat) with pass grades	Certificate of Secondary Education (Attestat) with good grades
Bahrain	Tawjihya/Thanawihya/General Secondary School Certificate with pass grades	Tawjihya/Thanawihya/General Secondary School Certificate with good grades
Bangladesh	Senior School Certificate/Higher Secondary Certificate with pass grades	Senior School Certificate/Higher Secondary Certificate with good grades
Botswana	Cambridge Overseas School Certificate with pass grades	Cambridge Overseas School Certificate plus satisfactory completion of one year of additional study
Brunei	Brunei Cambridge O-level with pass grades	Brunei Cambridge A-level/High school plus satisfactory completion of one year of additional study with pass grades
Cameroon	Baccalaureat or Certificat de Probation with pass grades in relevant subjects	Completion of high school education plus satisfactory completion of one year of additional study
China	Completion of Senior Secondary School Year 3 with 60% average/Completion of Senior Secondary School Year 2 with 70% average	Completion of Senior Secondary School Year 3 with 70% average or completion of one year of university with pass grades
Gambia	West African School Certificate or Senior School Certificate with pass grades	West African School Certificate or Senior School Certificate with good grades OR Completion of high school education plus satisfactory completion of one year of additional study
Georgia	Certificate of Secondary Education with pass grades	Certificate of Secondary Education with good grades
Ghana	West African School Certificate or Senior School Certificate with pass grades	West African School Certificate or Senior School Certificate with good grades OR Completion of high school education plus satisfactory completion of one year of additional study
Hong Kong	Successful completion of Form 5 with pass grades in relevant subjects OR HKDSE with passes in 3 relevant subjects	Successful completion of HKDSE with grades of 3-3-3 or higher
India	Completion of Year X with average 65% Completion of Year XI with average 50% Completion of Year XII with average 40%	CBSE or ICSE with 50% average
Indonesia	SMU 2 with average of 7.0 SMU 3 with average of 6.5	Completion of SMU 3 with an average grade 7.0 OR Completion of high school education plus satisfactory completion of one year of additional study
Iran	Successful completion of High School Diploma with pass grades	Successful completion of High School Diploma with good grades/Konkur with pass grade
Japan	Upper Secondary School Year 2 with GPA 2.5 Upper Secondary School Year 3 with GPA 2.0	Upper Secondary School Certificate with GPA Grade 3.0 OR Completion of high school education plus satisfactory completion of one year of additional study
Jordan	Tawjihya/General Secondary School Certificate with pass grades	Completion of first year of local degree with pass grades Part study of Higher/Technical Diploma with pass grades
Kazakhstan	Diploma of Completed Secondary Education (Attestat) with pass grades	Diploma of Completed Secondary Education (Attestat) with good grades
Kenya	East African School Certificate/Cambridge Overseas School Certificate/KCSE with pass grades	East African School Certificate/Cambridge Overseas School Certificate/KCSE with good grades
Kuwait	Tawjihya/Thanawihya/General Secondary School Certificate with pass grades	Tawjihya/Thanawihya/General Secondary School Certificate with good grades
Lebanon	Lebanese Baccalaureate or French Baccalaureate with pass grades	Completion of high school education plus satisfactory completion of one year of additional study
Libya	Secondary Education Certificate	Completion of high school education plus satisfactory completion of one year of additional study
Macau	iGCSE/O-levels/Completion of Form 5 or Senior Middle 2 with average grades	Completion of Form 6/Senior Middle School/Grade 12 with pass grades
Malaysia	SPM (Malaysia Certificate of Education) (or forecast) with average grades OR UEC with pass grades in relevant academic subjects	STPM or A-levels OR UEC with pass grades in relevant subjects OR STPM plus satisfactory completion of one year of additional study
Myanmar	High School Matriculation with pass grades in relevant subjects	High School Matriculation with good grades
Nigeria	West African School Certificate or Senior School Certificate with pass grades	West African School Certificate or Senior School Certificate with good grades OR Completion of high school education plus satisfactory completion of one year of additional study

Undergraduate Foundation		International Diploma
Oman	Tawjihya/Thanawihya/General Secondary School Certificate with pass grades	Tawjihya/Thanawihya/General Secondary School Certificate with good grades
Pakistan	Higher Secondary Certificate with pass grades	Higher Secondary Certificate with good grades
Qatar	Tawjihya/Thanawihya/Senior Schooling Certificate with pass grades	Tawjihya/Thanawihya/General Secondary School Certificate with good grades
Russia	Certificate of Secondary Education with good grades in relevant subjects	Certificate of Secondary Education with excellent grades in relevant subjects
Saudi Arabia	Tawjihya/Thanawihya/General Secondary School Certificate with pass grades	Tawjihya/Thanawihya/General Secondary School Certificate with good grades
Singapore	Singapore/Cambridge O-level/iGCSE with pass grades	Singapore/Cambridge A-level or O-levels plus satisfactory completion of two years' study towards Polytechnic Diploma/ Polytechnic Certificate/Polytechnic Advanced Diploma with pass grades
South Korea	Senior High School 2 with average 4th grade in relevant subjects/Senior High School 3 with average 6th grade in relevant subjects/School Leaving Certificate with average 60%	High School Diploma with 4th Grade
Sri Lanka	O-levels with average grades	Completion of GCE A-levels OR Completion of high school education plus satisfactory completion of one year of additional study
Taiwan	Senior High School Year 2 with 60% average Senior High School Year 3 with 55% average	Senior High School Leaving Certificate with 70% average OR Completion of high school education plus satisfactory completion of one year of additional study
Thailand	Mathayom (MAW) 5 with GPA 2.5 Mathayom (MAW) 6 with GPA 2.0	Mathayom (MAW) 6 with GPA 2.5 OR Completion of high school education plus satisfactory completion of one year of additional study
Turkey	Successful completion of Deviet Lisen Birtme Diplomasi OR High School Year 3 with pass grades	Successful completion of High School Year 3 with good grades
Uganda	Ugandan Certificate of Education with pass grades	Ugandan Certificate of Education with good grades
United Arab Emirates	Tawjihya/Thanawihya/General Secondary School Certificate with pass grades OR Technical Diploma: min. 60%	Tawjihya/Thanawihya/General Secondary School Certificate with good grades
Uzbekistan	Diploma of Completed Secondary Education with pass grades	Diploma of Completed Secondary Education with good grades
Vietnam	Completion of Year 12 with average Grade 5.0 Completion of Year 11 with average Grade 7.0	Completion of Year 12 with average Grade 7.0
Zambia	Zambia School Certificate with pass grades	Zambia School Certificate with good grades
International curricula - International Baccalaureate (IB), GCE A-levels, Canadian, USA, Australian high school	We will consider all international high school results where students have achieved average grades in the subjects relevant to their intended Foundation course.	We will consider all international high school results where students have achieved average grades in the subjects relevant to their intended Foundation course. We also consider students who have satisfactorily completed a recognised Foundation course.
Master's Foundation		
All	Successful completion of Bachelor's degree or equivalent, from a recognised university.	

Academic entry requirements listed here should be used as a guide only. Suitability for the programme will be assessed on a case-by-case basis. If your country is not listed, please contact [admissions@foundationcampus.com](mailto:admissions@foundationcampus.com)

# NEXT STEPS

## STEP ONE

Submit your application by one of the following methods:

**Online:**  
www.foundationcampus.com

**Email:**  
admissions@foundationcampus.com

**Fax:**  
+44 (0)1223 346181

**Post:**  
Admissions Office, FoundationCampus,  
Kett House, Station Road, Cambridge,  
CB1 2JH, United Kingdom

Please remember to include all relevant documentation:

- Academic transcripts (with translations if not originally in English)
- Evidence of English level
- Passport

Other documentation may be required depending on the course, Admissions will advise.

Maryam Baqer

**STUDIED**  
Undergraduate Foundation Programme –  
Life Sciences

**PROGRESSED TO**  
MPharm Pharmacy

## STEP TWO

Our Central Admissions team will review your application.

- We will send you an offer letter which will list any outstanding conditions. We will remove any conditions that have already been met. If we think the course is not right for you, we will suggest an alternative.
- If we have any queries about your application, our Central Admissions team will contact you for further information.

## STEP THREE

To accept your place on the course you will need to meet all the remaining conditions, including payment of the deposit/registration fee or proof of government sponsorship. Only once all conditions have been met, can your place be confirmed, although once the deposit is paid we will hold a place for you.

- Please note that if you require a visa to study with us, you may need to provide additional evidence to comply with the visa regulations in the country of the government and not of FoundationCampus. Your assistance in meeting these requirements is much appreciated.

## STEP FOUR

Once you have paid your deposit and met all the conditions of offer, we will confirm your place and send you a CAS (Confirmation of Acceptance to Study) or a Confirmation of Enrolment (CoE) if you do not need a CAS. If you need a visa, you will need to use your CAS/CoE to support your visa application. Please note a CAS can only be used 3 months before the start of the course.

- We will also send you pre-arrival information, including how to book accommodation should you require it.

## STEP FIVE

You will then need to apply for a visa if you require one to study in the UK. It is your responsibility to obtain a visa before you travel to join the course. If you do not have a valid visa, you will not be able to join the course so please make sure you apply as soon as possible.

- We will issue you with a student ID number, which will be sent to your personal email address, along with information about how to apply for your accommodation online.
- The University will take around seven days to process your accommodation application and will send a contract offer to your personal email which, if you are happy, you need to accept online.

## STEP SIX

You will need to pay at least the first term's tuition fees before you begin your programme of study at FoundationCampus.

- You should arrive on the weekend before the start of term; please check your CAS statement or Confirmation of Enrolment for further details.
- Newcastle is the closest international airport to Sunderland FoundationCampus. You can transfer to your accommodation by Metro, train, Campus Bus or taxi. Public transport is the cheapest option. Read the pre-arrival information we will send you for more details.

## TERM DATES

Term	
1	29 September 2014 – 12 December 2014
2	12 January 2015 – 20 March 2015
3	30 March 2015 – 05 June 2015
4	15 June 2015 – 26 August 2015

## 3. DETAILS OF COURSE(S) FOR WHICH YOU WISH TO APPLY

Please give details of the FoundationCampus programme for which you are applying. Please also state the subject and study level you are aiming for (undergraduate or Master's degree) alongside the proposed year of study.

University degree you wish to progress to e.g. – BA (Hons) Business Management		
FoundationCampus programme:	<input type="checkbox"/> Undergraduate Foundation Programme <input type="checkbox"/> Master's Foundation Programme	<input type="checkbox"/> International Diploma Programme <input type="checkbox"/> English Language Preparation Programme
Date you want to start the programme:Month/Year	<input type="checkbox"/> Sept <input type="checkbox"/> Jan <input type="checkbox"/> April <input type="checkbox"/> June <input type="checkbox"/> 2014 <input type="checkbox"/> 2015	The number of terms you wish to study:

## 4. ACADEMIC HISTORY

Have you ever studied in the UK before?  Yes  No If you answered yes to the question, please provide the following details and a copy of any previous UK visas:

Name of school / institution (in full):		Course of study:
Date of study:		

## 5. DOCUMENTS

Please enclose the following and tick to confirm you have included them.

<input type="checkbox"/> Completed and signed application form	<input type="checkbox"/> Copies of transcripts (with certified English translated copies if in any other language)
<input type="checkbox"/> Academic qualifications	<input type="checkbox"/> Copy of passport and copies of any previous UK visas

## 6. USE OF AGENTS

Have you used an educational agent during your application process?  Yes  No

If no, please proceed to section 7. If yes, please complete the details below and see section 15 of the Conditions of Enrolment which can be found on the FoundationCampus website at www.foundationcampus.com

Name of agent (in full):	
Name of contact person at agency and email address:	
Agent address (in full):	

## 7. HOW DID YOU HEAR ABOUT US?

Please indicate how you heard of these courses (Please tick)  Agent  Exhibition  Family  Internet  Other (please specify) \_\_\_\_\_

## 8. DECLARATION

I declare that I am applying to FoundationCampus as a genuine student and that the information and supporting evidence and academic documents I have provided are true copies. I understand that by signing this declaration I have read, understood and agreed to the terms and conditions and fees of study at Sunderland FoundationCampus as outlined on the FoundationCampus website www.foundationcampus.com/en/about/tandc and agree to comply with UKBA regulations at the time of application and during my course of study. If you do not have access to the website or would like a written copy of the conditions of enrolment, you can request these from FoundationCampus Central Admissions at admissions@foundationcampus.com

In order to deliver your education and protect your welfare, Cambridge Education Group (CEG) will collect, keep and otherwise process personal data, including sensitive personal data that relates to you and your circumstances. This will include your name and contact details, and those of your parents, guardians, agent or sponsor. We will also keep data about your education, health, welfare, accommodation, travel, passport, visa, finances and fees.

We will keep this information secure at all times and we will share it within CEG as necessary to run our business, deliver your education and ensure your safety. We will also release this information where it is legally required or lawful to do so, or in the event of a medical emergency if it is necessary to protect your health or the health of others. We will provide reports to your agent, parents or guardian on your progress, and also where necessary with our academic partners such as universities. Some of our data transfers may transfer your data to other countries.

- Do you consent to your personal data, being stored processed and released by CEG in this way?
- Do you consent to your sensitive personal data including health, welfare, nationality, ethnicity, religious and other data being stored, processed and released in this way?
- Do you consent to the reasonable use of your details and academic achievement to be used for marketing purposes?

Signature of Applicant \_\_\_\_\_

Date \_\_\_\_\_

Parent or Guardian Signature \_\_\_\_\_

Date \_\_\_\_\_

If applicant is not the fee payer or is under 18

"Before starting the FoundationCampus course I worked as a pharmacist assistant in Kuwait. I decided to come to FoundationCampus as I want to progress my career in this field and Sunderland has a good reputation for their course in Pharmacy. The UK is the best country for medical training in the sciences field."

# SUNDERLAND FOUNDATIONCAMPUS APPLICATION FORM

Apply ONLINE at [www.foundationcampus.com](http://www.foundationcampus.com) or return this form to:  
Admissions Office, FoundationCampus, Kett House, Station Road  
Cambridge, CB1 2JH, United Kingdom  
Tel: +44 (0)1223 345698 Fax: +44 (0)1223 346181 Email: [admissions@foundationcampus.com](mailto:admissions@foundationcampus.com)

Please write neatly using BLOCK CAPITALS in black ink or typescript. Incomplete application forms submitted without ALL the supporting documents will delay the decision process.

1. PERSONAL DETAILS	
Title (Mr/Mrs/Miss/Ms etc)	
First name(s)	Family name
Date of birth (dd/mm/yy)	Age on entry
Nationality (as passport)	Male/Female
Country of permanent residence	
Home address	Correspondence address (if different)
Postcode	Postcode
Country	Country
Mobile (incl. country code)	Mobile (incl. country code)
Telephone (incl. country code)	Telephone (incl. country code)
Student email	

Do you have any criminal convictions?  Yes  No (Your enquiry cannot be processed if you do not complete this section)

## 2. DISABILITY/SPECIAL NEEDS


FoundationCampus will conduct a needs analysis with you to determine any support that may be required, and to ensure that your personal needs can be met wherever possible. However, failure to disclose a specific requirement may result in us not being able to meet your needs.

Please state any condition which might necessitate special arrangements or facilities. Consult the Notes for guidance at [www.foundationcampus.com/en/about/tandc](http://www.foundationcampus.com/en/about/tandc)


## NOTES (FOR OFFICE USE ONLY)

--

**Cambridge Education Group**  
Kett House, Station Road  
Cambridge CB1 2JH, United Kingdom

**Telephone:** +44 (0)1223 345698  
**Email:** [admissions@foundationcampus.com](mailto:admissions@foundationcampus.com)  
**Fax:** +44 (0)1223 346181  
**Web:** [www.foundationcampus.com](http://www.foundationcampus.com)  
**Facebook:** [www.facebook.com/foundationcampus](http://www.facebook.com/foundationcampus) 

### Overseas offices:

<b>Brazil</b> +55 (0) 15 998 54 5454 <a href="mailto:brasil@ceg-uk.com">brasil@ceg-uk.com</a>	<b>Japan</b> +81 50 5809 9582 <a href="mailto:japan@ceg-uk.com">japan@ceg-uk.com</a>	<b>Pakistan</b> +92 345 1444 455 <a href="mailto:pakistan@ceg-uk.com">pakistan@ceg-uk.com</a>
<b>China</b> +86 10 5869 0568 <a href="mailto:china@ceg-uk.com">china@ceg-uk.com</a>	<b>Korea</b> +82 2 2052 1904 <a href="mailto:korea@ceg-uk.co.kr">korea@ceg-uk.co.kr</a>	<b>Russia</b> +7 495 223 1348 <a href="mailto:russia@ceg-uk.ru">russia@ceg-uk.ru</a>
<b>Central Asia</b> +7 926 007 3891 <a href="mailto:centralasia@ceg-uk.com">centralasia@ceg-uk.com</a>	<b>Latin America</b> +52 (1) 81 1778 9091 <a href="mailto:latinamerica@ceg-uk.com">latinamerica@ceg-uk.com</a>	<b>South East Asia</b> +60 (0) 19 790 0236 <a href="mailto:southeastasia@ceg-uk.com">southeastasia@ceg-uk.com</a>
<b>Hong Kong, Macau, Taiwan</b> +852 2882 4046 <a href="mailto:hongkong@ceg-uk.com">hongkong@ceg-uk.com</a>	<b>Nigeria</b> +234 81 8527 9072 <a href="mailto:nigeria@ceg-uk.com">nigeria@ceg-uk.com</a>	<b>Vietnam</b> +84 91 4849 288 <a href="mailto:vietnam@ceg-uk.com">vietnam@ceg-uk.com</a>

Get in touch,  
we'd love to hear from you.



Information in this brochure is correct at time of print on 1 March 2014. FoundationCampus and the University Partner reserve the right to alter, reschedule or close courses which do not remain viable, students will be informed.



FOUNDATIONCAMPUS