

# COVENTRY FOUNDATION CAMPUS

2014-2015



**FOUNDATION CAMPUS**

Guaranteed progression to the UK's  
**leading modern university**



- 02 Welcome to Coventry FoundationCampus
- 04 The University campus and surrounding area
- 06 The best choice for your future career - which degree?
- 12 Your route to a university degree
- 14 Our programmes
- 21 Living in Coventry - guide to accommodation
- 26 Next steps
- 28 Application form



FoundationCampus is proud to work in partnership with Coventry University to offer high-quality university preparation programmes for international students on the University campus.

**Find out more:**  
[www.foundationcampus.com](http://www.foundationcampus.com)

**Facebook:**  
[www.facebook.com/foundationcampus](http://www.facebook.com/foundationcampus)

# COVENTRY UNIVERSITY



Coventry is a forward-looking, modern university with a proud tradition as a provider of high-quality education and a focus on applied research.

The city-centre campus is home to over 20,000 students from more than 130 countries and is continually developing and evolving. Students benefit from state-of-the-art equipment and facilities in all academic disciplines, with further plans for investment over the next few years.

Through links with leading businesses and organisations in the private, public and voluntary sectors, Coventry University students are able to access project and placement opportunities\* that will enhance their employability on graduation.

"I chose FoundationCampus because I wanted to gain some experience in creative arts, as this was not offered in my high school. It is vital for my degree to learn these skills.

I heard that FoundationCampus has a great reputation and has helped many people get to Coventry University. I was glad when I found out that I could study here as they offered the variety of subjects I was looking for."

\*subject to eligibility.

Zohair Imran Shaikh

**STUDIED**  
 International Foundation Programme  
 - Engineering

**PROGRESSED TO**  
 BA (Hons) Architecture



## Ideal study location for international students

- Awarded Modern University of the Year by The Times and Sunday Times Good University Guide 2014.
- Ranked 33rd in the UK by the Guardian University Guide 2014.
- The Campus sits at the centre of Coventry and is an integral part of the community.
- 90% of undergraduate students are satisfied with the quality of their course (NSS 2013).



## Preparing you for a successful career

- 94% graduate employment rate (DLHE 2009/10).
- The only UK university that offers credit-bearing career modules designed to help you develop more of the practical skills sought by employers.
- Add+vantage programme designed to enhance students' employability.



## Worldwide accreditation

- Recognition of degree programmes by professional and public bodies ensures that students receive all the relevant teaching, knowledge and skills to prepare them for their chosen career, and includes:
  - Association of Chartered Certified Accountants (ACCA)
  - Chartered Institute of Personnel and Development (CIPD)
  - Chartered Institute of Marketing (CIM)
  - BCS, The Chartered Institute for IT
  - The Law Society.



## Excellent teaching and learning facilities

- In the top 20 universities for teaching excellence (Guardian League Table 2013).
- £35 million student building 'TheHub' designed especially for students to offer everything you need under one roof.
- New state-of-the-art £55 million Engineering and Computing centre has been built to reflect future engineering technology.
- Award-winning Lanchester Library with, over 350,000 books, 2,000 print journals and 8,000 electronic journal titles.



## Enterprising and entrepreneurial

- Named 'Entrepreneurial University of the Year' - Times Higher Education Awards 2011.
- In the top three of UK universities for working with business.
- In the top 10 of UK universities for continuing professional development and continuing education with small to medium-sized business.
- Award-winning technology park focusing on the development of innovation-led, high-growth, knowledge-based businesses.





All distances are given from FoundationCampus

# The University campus and surrounding area COVENTRY

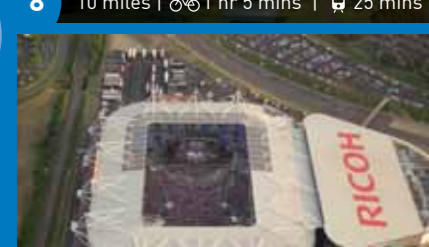
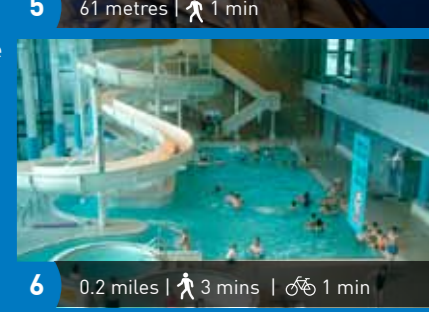
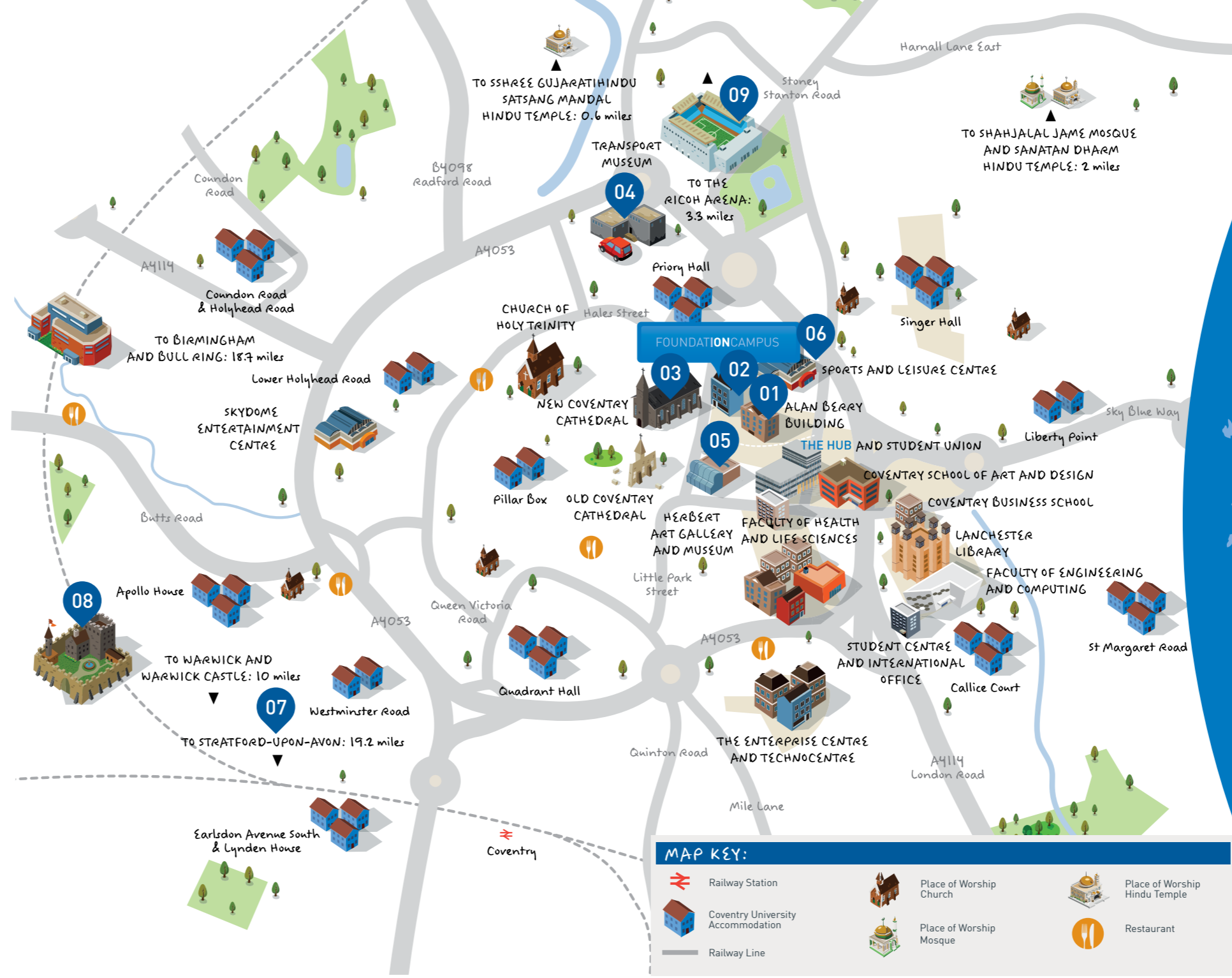
The city of Coventry is welcoming, friendly and safe, and the third most affordable in the UK. The compact single-site campus is right in the city centre.

Accommodation is located within walking distance of our campus and close to the city centre, with easy access to the University facilities as well as public transport, shops, restaurants, cafés, sports facilities, theatres and cinemas.

Coventry is only one hour's train journey away from London and less than 20 minutes from Birmingham.

“Coventry is a great city; everything I need is easy to get to and I feel safe here!”

Mawia Mustafa El Saidi  
**STUDIED**  
 Master's Qualifying Programme – Humanities  
**PROGRESSSED TO**  
 MA English Language for Teaching





# DEGREES

## Undergraduate

- BA (Hons) Accountancy
- BA (Hons) Accounting and Finance
- BA (Hons) Advertising and Business
- BA (Hons) Advertising and Marketing
- **BA (Hons) Business Administration**
- BA (Hons) Business and Finance
- BA (Hons) Business and Marketing
- BA (Hons) Business Economics
- BA (Hons) Business and Human Resource Management
- **BA (Hons) Business Management**
- BA (Hons) Economics
- BA (Hons) Enterprise and Entrepreneurship
- BA (Hons) Event Management
- BA (Hons) Finance and Investment<sup>1</sup>
- BSc (Hons) Finance
- BA (Hons) Financial Economics
- BSc (Hons) International Business Management (4 years)
- BA (Hons) International Economics and Trade
- BA (Hons) Languages for Business
- BA (Hons) Marketing
- BSc (Hons) Oil, Gas and Energy Management<sup>1</sup>
- BA (Hons) Sport Management
- BA (Hons) Sport Marketing

## Postgraduate

- MSc Accounting and Financial Management
- MA Advertising and Marketing
- MSc Banking and Finance
- MA Enterprise and Entrepreneurship
- MSc Event Management
- MBA Finance<sup>2</sup>
- MSc Finance
- MA Human Resource Management
- MSc International Business
- MBA International Business<sup>2</sup>
- MSc International Business Economics
- MSc International Human Resource Management
- MSc International Marketing
- MBA International Sport Management<sup>2</sup>
- MSc International Tourism Management
- MSc Investment Management
- MA Marketing Management
- MBA Management<sup>2</sup>
- MBA Marketing<sup>2</sup>
- MSc Oil and Gas Management
- MSc Sport Management
- MA Sport Marketing
- MSc Strategic Marketing Management

Progression to Year 2 of these degrees available through the International Diploma Programme

<sup>1</sup> You will need higher grades for progression to these degrees; please see [www.foundationcampus.com/coventry](http://www.foundationcampus.com/coventry) for more details.

<sup>2</sup> 2 years' postgraduate work experience required.



## The best choice for your future career WHICH DEGREE?

### Business, Economics, Finance and Management

- One of the largest business schools in Europe with regional, national and international industry links.
- The Guardian University Guide 2014 ranked Coventry University 12th in the UK for Business and Management.
- The Sunday Times University Guide reported Business and Management programmes as excellent.
- Many courses provide the opportunity to complete a 12-month industrial placement, adding valuable practical experience to your academic learning.
- Long-standing partnerships with many blue-chip companies such as IBM, Hilton Hotels, Intel, Xerox, Hewlett-Packard and Rolls-Royce.
- Business and Management is ranked 12th in the UK with a 91% course satisfaction rating in the National Student Survey.



### Law, Humanities and Social Sciences

- All of the LLB degrees offered at Coventry University are recognised by the Law Society and General Council of the Bar.
- Undergraduate programmes provide students with a qualifying Law degree that satisfies the academic stage of training for those who wish to enter the legal profession.
- The Newsome Vaughan Mooting competition, sponsored by Newsome Vaughan solicitors, runs each year and enables students to develop their advocacy skills in a mock appeal.
- Many Law graduates regularly secure places on the Legal Practice and Bar vocational courses in preparation for professional qualification as solicitors or barristers.
- Students put their studies into practice through their own Law Clinic: Coventry Legal Advice Service (CLAS).



# DEGREES

## Undergraduate

- LLB (Hons) Business Law<sup>1</sup>
- BSc (Hons) Disaster Management
- BSc (Hons) Disaster Management and Emergency Planning
- BA (Hons) English
- BA (Hons) English and Creative Writing
- BA (Hons) English and Journalism
- BA (Hons) English and TEFL
- BA (Hons) French
- BA (Hons) French and English
- BA (Hons) French and International Relations
- BA (Hons) French and Spanish
- BA (Hons) French and TEFL
- BA (Hons) Geography
- BSc (Hons) Geography
- BSc (Hons) Geography and Natural Hazards
- BA (Hons) History
- BA (Hons) History and Politics
- BA (Hons) International Relations
- LLB (Hons) International Law<sup>1</sup>
- LLB (Hons) Law<sup>1</sup>
- BA (Hons) Politics
- BA (Hons) Sociology
- BA (Hons) Sociology and Criminology
- BA (Hons) Sociology and Psychology
- BA (Hons) Spanish
- BA (Hons) Spanish and English
- BA (Hons) Spanish and International Relations
- BA (Hons) Spanish and TEFL

## Postgraduate

- MA English Language Teaching
- MA International Relations
- MA Peace & Reconciliation Studies
- MA Terrorism, International Crime & Global Security
- MSc Disaster Management
- MSc Emergency Planning & Management
- MSc Environmental Management
- MSc Food Security Management
- MSc Global Development & Comparative Law
- MSc Global Distribution Management
- MSc Petroleum and Environmental Technology
- LLM International Business Law<sup>1</sup>
- LLM International Law<sup>1</sup>
- LLM Law<sup>1</sup>

<sup>1</sup> You will need higher grades for progression to these degrees; please see [www.foundationcampus.com/coventry](http://www.foundationcampus.com/coventry) for more details.

# DEGREES

## Undergraduate

- BEng (Hons) Aerospace Systems Engineering<sup>1</sup>
- BEng (Hons) Aerospace Technology<sup>1</sup>
- BSc (Hons) Applied Mathematics and Theoretical Physics<sup>1</sup>
- BSc (Hons) Architectural Technology<sup>1</sup>
- BSc (Hons) Architecture<sup>2</sup>
- MEng/BEng (Hons) Automotive Engineering<sup>1</sup>
- BSc (Hons) Aviation Management<sup>1</sup>
- BSc (Hons) Building Surveying<sup>1</sup>
- BSc (Hons) Business Information Technology<sup>1</sup>
- MEng/BEng/BSc (Hons) Civil Engineering<sup>1</sup>
- BEng (Hons) Computer Hardware and Software Engineering<sup>1</sup>
- BSc (Hons) Computer Science<sup>1</sup>
- BSc (Hons) Computing<sup>1</sup>
- BSc (Hons) Construction Management<sup>1</sup>
- BEng (Hons) Electrical and Electronic Engineering<sup>1</sup>
- BEng (Hons) Electronic Engineering<sup>1</sup>
- BEng (Hons) Electrical Systems Engineering<sup>1</sup>
- BSc (Hons) Engineering Studies<sup>1</sup>
- BSc (Hons) Ethical Hacking and Network Security<sup>1</sup>
- BSc (Hons) Games Technology<sup>1</sup>
- BSc (Hons) Mathematics<sup>1</sup>
- BSc (Hons) Mathematics and Statistics<sup>1</sup>
- MEng/BEng (Hons) Mechanical Engineering<sup>1</sup>
- BEng (Hons) Motorsport Engineering<sup>1</sup>
- BSc (Hons) Multimedia Computing<sup>1</sup>
- BSc (Hons) Quantity Surveying and Commercial Management<sup>1</sup>

<sup>1</sup> You will need higher grades for progression to these degrees; please see [www.foundationcampus.com/coventry](http://www.foundationcampus.com/coventry) for more details.

<sup>2</sup> The number of places available to study this degree, and the Undergraduate Foundation Programme leading to this degree, are limited. You will need an interview/audition/additional portfolio review and/or higher grades for progression to this degree. Please visit [www.foundationcampus.com](http://www.foundationcampus.com) for further details.

## The best choice for your future career WHICH DEGREE?

### Computing, Engineering and Sciences

#### Computers and networking

- Professional accreditation by the Institution of Engineering and Technology and the British Computer Society. Specific degrees lead to registration as an Incorporated Engineer.
- Industry placement: an excellent record of placing students in leading industries, for example NATS Ltd and Group 4 Technology UK.
- Courses are enhanced through the use of specialist studio and laboratory facilities, a dedicated intranet and professional software.
- Opportunity for students to become CISCO certified alongside their course.
- Activity-led learning components allow students to get hands-on experience from day one, putting theory into practice.

#### Engineering

- Study in the new £55 million sustainable building for leading activity-based learning.
- Invested £1 million in high-performance computing facilities including the UK's only ethical hacking laboratory.
- Graduate employment rate of 94%.
- Closed single wind tunnel with open jet working section supplied and designed by Mercedes AMG Petronas Formula One team.
- Excellent staff to student ratios – 15:1 (classroom) and 6:1 (tutorials).

#### Industrial design

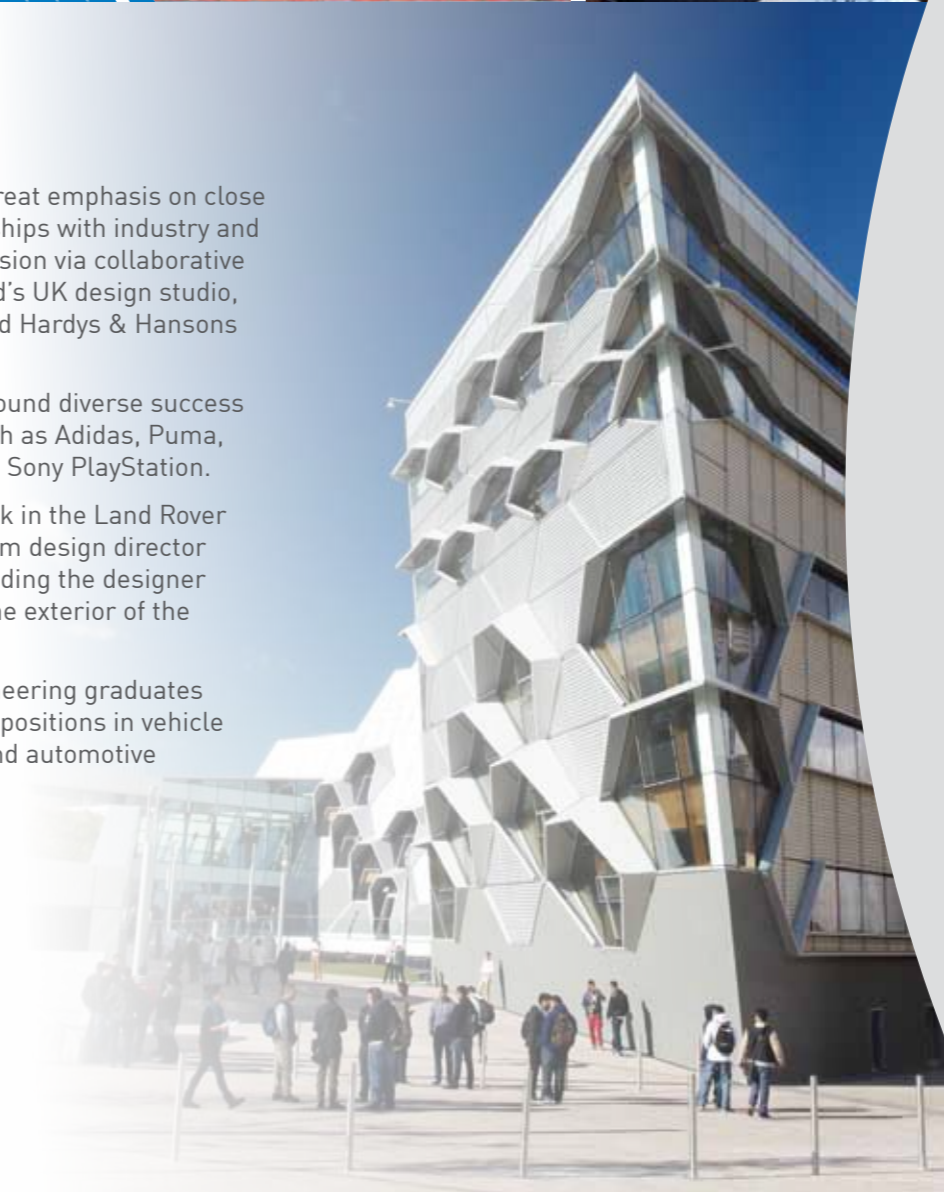
- All courses put great emphasis on close working relationships with industry and the design profession via collaborative projects with Ford's UK design studio, Ferrari in Italy and Hardys & Hansons brewery.
- Graduates have found diverse success in companies such as Adidas, Puma, Reebok, Nike and Sony PlayStation.
- 12 graduates work in the Land Rover design studio, from design director downwards, including the designer responsible for the exterior of the Discovery 3.
- Automotive Engineering graduates command senior positions in vehicle manufacturing and automotive industries.



# DEGREES

## Postgraduate

- MBA Aerospace Manufacture
- MSc Aerospace Manufacturing Engineering
- MBA/MSc Air Transport Management
- MSc Applied Aircraft Technologies
- MSc Automotive Engineering
- MBA Automotive Manufacture
- MSc Automotive Manufacturing Engineering
- MSc Building Surveying
- MSc Civil and Structural Engineering
- MSc Civil Engineering
- MSc Computer Science
- MSc Computing
- MSc Construction Project and Cost Management
- MSc Control Engineering
- MSc Electronic Engineering
- MSc Electrical and Electronic Engineering
- MSc Embedded Microelectronics and Wireless Systems
- MBA Engineering Management
- MSc Engineering and Management
- MSc Engineering Business Management
- MSc Engineering Project Management
- MSc European Systems and Control
- MSc Forensic Computing
- MBA/MSc Information Technology
- MSc Lean Manufacturing and Engineering Management
- MBA/MSc Logistics
- MSc Low Impact Building Performance and Evaluation
- MSc Management for Construction
- MSc Management of Information Systems
- MSc Management of Information Technology
- MSc Manufacturing Engineering
- MSc Mechanical Engineering
- MSc Network Computing
- MSc Oil and Gas Engineering Management (subject to approval)
- MSc Serious Games and Digital Content
- MSc Software Development
- MSc Supply Chain Management
- MSc Systems and Control
- MSc Vehicle Performance Dynamics





# DEGREES

## Undergraduate

- BSc (Hons) Analytical Chemistry and Forensic Science
- BA (Hons) Applied Community and Social Studies
- BSc (Hons) Biological and Forensic Sciences
- BSc (Hons) Biomedical Science and Applied Biomedical Science
- BA (Hons) Criminology
- BA (Hons) Criminology and Law
- BA (Hons) Criminology and Psychology
- BSc (Hons) Environmental Health
- BSc (Hons) Exercise, Nutrition and Health
- BSc (Hons) Food and Nutrition
- BSc (Hons) Forensic Investigations
- BSc (Hons) Human Biosciences
- BA (Hons) International Leadership and Management in Health and Social Care
- BSc (Hons) Medical and Pharmacological Science
- BSc (Hons) Psychology
- BSc (Hons) Psychology and Criminology
- BSc (Hons) Sport Psychology
- BSc (Hons) Sport and Exercise Science

## The best choice for your future career WHICH DEGREE?

### Life Sciences

- All undergraduate Psychology programmes are accredited by the British Psychological Society.
- Impressive range of teaching and research facilities, with well-equipped state-of-the-art clinical skills laboratories, together with an excellent range of open-access computing laboratories, seminar and tutorial space, and large, well-equipped lecture theatres.

- Coventry University has been selected to work in partnership with the new Russian International Olympic University, due to the Sports Management courses being ranked number 1 in the UK and in the top 15 worldwide (Eduniversal guide).
- 100% record for securing placements for students who wish to gain practical experience in their third year of undergraduate study.
- Criminology was awarded the Skills for Justice award in 2011 for demonstrating excellent links with key graduate employers.

### Art, Design and Media

- 150 years experience of training world-leading artists and designers.
- £7 million fully refurbished 1930s cinema, housing industry-leading media, photography, music and performing arts facilities.
- Commercial fashion studios and fully-equipped workshops, including laser-cutting and digital-printing facilities.
- Industry-standard automotive, product, graphics and animation suites, north-facing painting studios, sculpture workshops and the newly opened Lanchester Art Gallery.

- Students are invited to attend the UK's most prestigious graduate design exhibition in London.
- Voted the best international design school in the world (World Automotive Design Competition (WADC)).
- Lecturers have been awarded prestigious National Teaching Fellowships from the Higher Education Academy in recognition of their excellence in teaching and learning.

# DEGREES

## Undergraduate

- MDes/BA (Hons) Automotive Transport Design<sup>1</sup>
- BA (Hons) Fashion<sup>1</sup>
- BA (Hons) Fine Art<sup>1</sup>
- BA (Hons) Fine Art and Illustration<sup>1</sup>
- BA (Hons) Graphic Design<sup>1</sup>
- BA (Hons) Illustration and Animation<sup>1</sup>
- BA (Hons) Illustration and Graphics<sup>1</sup>
- MDes/BA (Hons) Interior Design<sup>1</sup>
- BA (Hons) Journalism and Media<sup>1</sup>
- BA (Hons) Media and Communications
- BA (Hons) Media Production
- BA (Hons) Photography<sup>1</sup>
- MDes/BA (Hons) Product Design<sup>1</sup>



"I have really enjoyed the Foundation programme because I learnt lots of new techniques that I could apply to my work. When I finish my degree I will work in my family's fashion business."

Sharon Shea

**STUDIED**  
International Foundation Programme  
Art, Design & Media

**PROGRESSED TO**  
BA (Hons) Fashion



<sup>1</sup> You will need an interview/audition/additional portfolio review and/or higher grades for these degrees; please see [www.foundationcampus.com/coventry](http://www.foundationcampus.com/coventry) for more details.

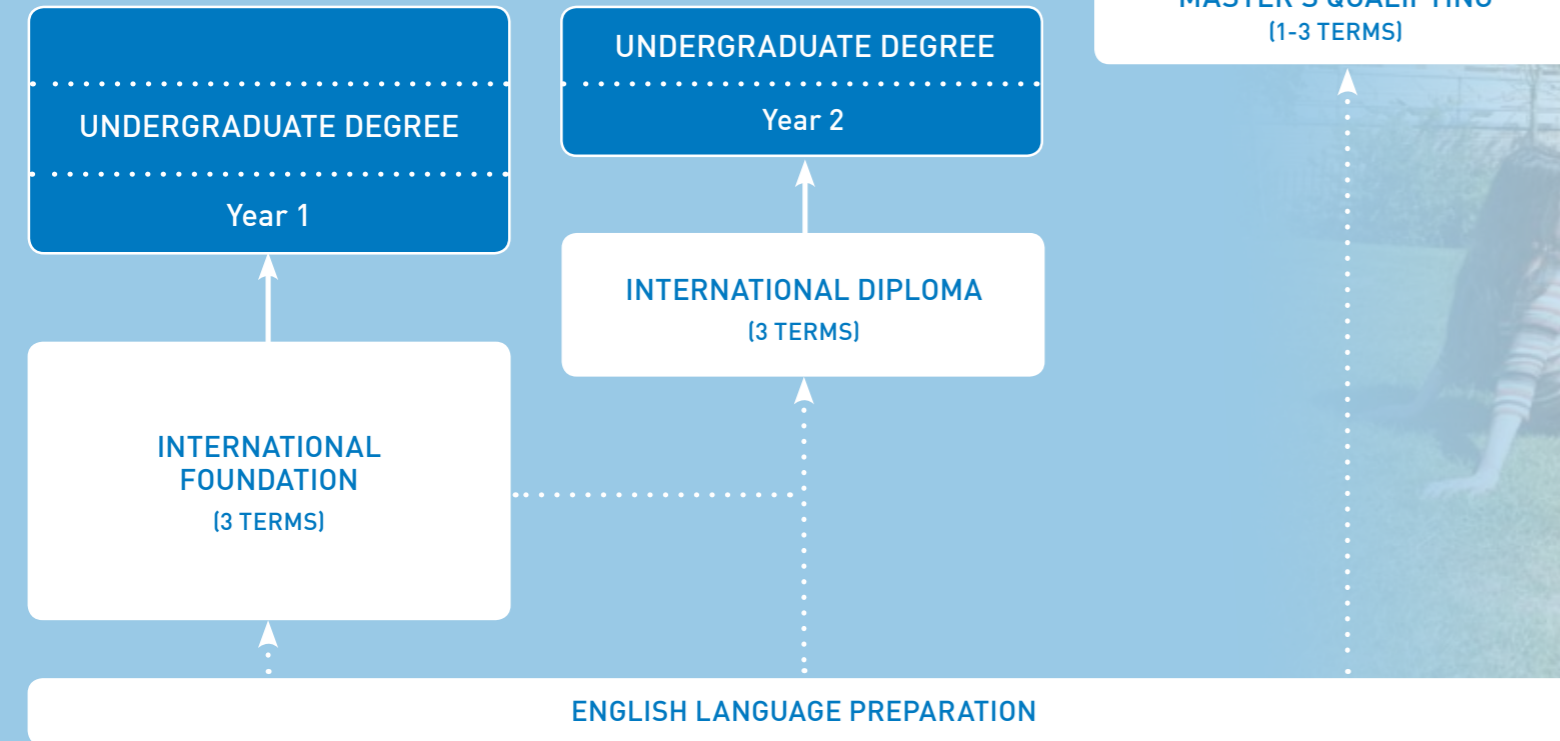
A portfolio is required to apply for the Art & Design International Foundation Programme for students wishing to progress on to Art & Design and Industrial Design degree programmes.

# Your route to a UNIVERSITY DEGREE

- Coventry University degree
- Coventry FoundationCampus programme

## Undergraduate pathways

## Master's pathway



## Studying with FoundationCampus

### Guaranteed progression

Coventry FoundationCampus offers guaranteed progression\* to a wide range of undergraduate and Master's degrees at Coventry University, on successful completion of our Foundation or Diploma programme.

### Outstanding teaching and support

- Through every step of your journey with us, you will be supported by highly-qualified teachers and support staff, both in and outside the classroom.
- Your personal tutor will meet with you regularly to ensure you are on track to pass the programme and progress to your chosen degree.
- Your personal tutor is also there to help you with any issues you might have inside or outside the classroom.

### A proven track record of success

- FoundationCampus is part of Cambridge Education Group, the UK's leading university pathway provider since 1952.
- Cambridge Education Group was the first private institution to offer university Foundation programmes in the UK in 1985, and successfully prepares hundreds of students for the UK's top universities every year.

### Quality assured

Coventry FoundationCampus is reviewed regularly by the Quality Assurance Agency (QAA), who is responsible for maintaining standards across the UK university system.

### Part of the University from day one

- The FoundationCampus centre is located at the heart of the University, close to all the University's facilities.
- You will receive a University student card, and with it you will have access to all the University's facilities, clubs and societies while you study your FoundationCampus programme.
- You will meet your course leader at the University before you start your degree, and have the opportunity to try out some of the excellent facilities.



\* Guaranteed progression is subject to meeting the specified entry criteria.



## Programme details

**Length of programme<sup>2</sup>:**  
3 terms

**English level:**  
From 4.5 IELTS or equivalent, with no single element less than 4.0, for 3-term IFP

**Academic requirements:**  
See page 24 for country-specific requirements

**Minimum age:**  
17+

**Hours per week:**  
Up to 25

**Examinations/Coursework:**  
60%/40%<sup>3</sup>

**Pass mark for guaranteed progression<sup>1</sup>:**

- 40% in academic subjects<sup>4</sup>
- 6.0 IELTS or equivalent (internal assessment)

<sup>1</sup> Guaranteed progression is subject to meeting the specified entry criteria.

<sup>2</sup> Extended programmes are available if you do not yet have the required English language level. These programmes last 4 terms and include an English language module (ELM) followed by the 3 terms of Foundation required to apply for entry to the first year of your undergraduate degree. If your language level is below 4.0 IELTS or equivalent then we offer the English Language Preparation Programme (ELPP) – see page 20 for details or visit [www.foundationcampus.com](http://www.foundationcampus.com)

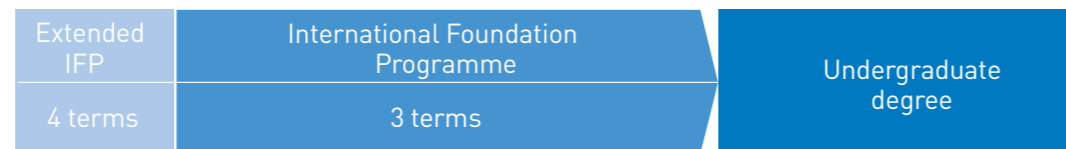
<sup>3</sup> This ratio may vary depending on subject choice.

<sup>4</sup> This is the pass mark for progression to most degrees. Some degrees require an additional interview/audition/portfolio and/or high pass marks; these are indicated on the degree list.

# INTERNATIONAL Foundation Programme (IFP)

This programme gives guaranteed progression<sup>1</sup> to Year 1 of a wide range of undergraduate degrees or the International Diploma in Business & Management.

### Degree progression



| IELTS 4.0 | | IELTS 4.5 | | IELTS 5.0 | | IELTS 5.5 | | IELTS 6.0

### Dates and fees

|                                   | Per term | Annually (3 terms) | Progressing to undergraduate degree starting in |
|-----------------------------------|----------|--------------------|---|
| 08 April 2014 – 12 December 2014* | £3,850   | £11,550            | Jan 2015  |
| 29 September 2014 – 05 June 2015  | £4,100   | £12,300            | Sept 2015                                       |
| 12 January 2015 – 26 August 2015  | £4,100   | £12,300            | Sept 2015                                       |
| 30 March 2015 – 11 December 2015* | £4,100   | £12,300            | Jan 2016  |

All programmes are subject to a £100 registration fee and a £2,400 refundable deposit.

\*For Business, Economics, Finance and Management, and Computing, Engineering and Sciences pathways.

### Pathways and academic modules

|   | Business, Economics, Finance & Management | Computing, Engineering & Sciences | Law, Humanities & Social Sciences | Life Sciences | Art & Design |
|---|---|-----------------------------------|-----------------------------------|---------------|--------------|
| Academic English Preparation & Study Skills | C   | C                                 | C                                 | C             | C            |
| Accounting                                  | •   |                                   |                                   |               |              |
| Biology                                     |   |                                   |                                   | C             |              |
| Business                                    | C   |                                   |                                   |               |              |
| Chemistry                                   |   | •                                 |                                   | •             |              |
| Economics                                   | •   |                                   | •                                 |               |              |
| International Relations                     | •   |                                   | •                                 |               |              |
| Mathematics                                 | • (C)                                     | C                                 |                                   | •             |              |
| Media Studies                               | •   |                                   | •                                 |               | •            |
| Physics                                     |   | C                                 |                                   |               |              |
| Psychology                                  | •   |                                   | •                                 | •             |              |
| Sociology                                   | •   |                                   | •                                 |               |              |
| Introduction to Art                         |   |                                   |                                   |               | •            |
| Art History and Contextual Studies          |   |                                   |                                   |               | •            |
| Visual Studies                              |   |                                   |                                   |               | •            |

You take three academic modules plus IELTS English Preparation and Academic Study Skills  
C = Compulsory module • = Optional module (C) = Compulsory if progressing to Economics or Finance-related degrees

**Note:** The optional modules are subject to availability and you will be guided onto the best combination of academic modules for your intended degree when you arrive at Coventry FoundationCampus.

### Who is this programme designed for?

This programme is designed to prepare international students, who have completed senior secondary education, for entry to undergraduate studies at Coventry University. All students who successfully complete the IFP are guaranteed placement on a suitable programme of undergraduate study at Coventry University. The IFP programme is set at level 3, which is equivalent to A-level standard in the UK.

### How long will I study for?

The duration of the programme is one academic year (nine months). The year is divided into three terms of seven to eight teaching weeks, one reading week and an examination week. You will undertake up to 25 hours of classroom-based study per week.

### What will I study?

This programme includes English, and a choice of three academic subject modules chosen according to the progression degree.

The options available for your chosen pathway at Coventry FoundationCampus are shown in the table on this page.

### How will I be assessed?

You will be assessed by a variety of methods during your time with us: the intention is that you have a chance to experience the full range of assessment methods that you might experience at university when you start your degree.





## Programme details

**Length of programme<sup>2</sup>:**  
3 terms

**English level:**  
From 5.5 IELTS or equivalent,  
for 3-term IDP

**Academic requirements:**  
See page 24 for country-specific requirements

**Minimum age:**  
18+

**Hours per week:**  
Up to 25 hours in total. Up to 18 hours of  
academic modules and 7 hours of English  
for Academic Purposes

**Examinations/Coursework:**  
60%/40%

**For guaranteed progression<sup>1</sup>:**

- You must achieve a Pass in each academic module
- 6.5 IELTS or equivalent (internal assessment)

<sup>1</sup> Guaranteed progression is subject to meeting the specified entry criteria.

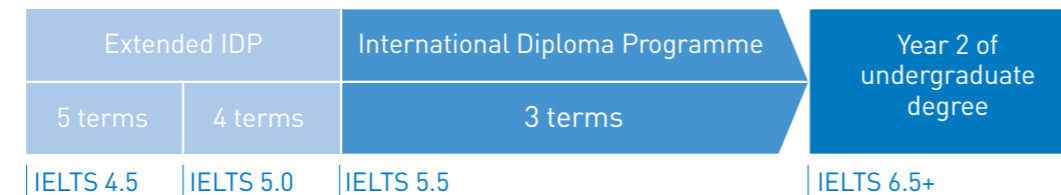
<sup>2</sup> Extended programmes are available if you do not yet have the required English language level. These programmes last 4 or 5 terms and include English language modules (ELM) followed by the 3 terms of International Diploma required to apply for entry to the second year of your undergraduate degree. If your language level is below 4.0 IELTS or equivalent then we offer the English Language Preparation Programme (ELPP) – see page 20 for details or visit [www.foundationcampus.com](http://www.foundationcampus.com)

# INTERNATIONAL Diploma Programme (IDP)



**Guaranteed progression<sup>1</sup> to Year 2 of selected Business degrees.**

### Degree progression



### Dates and fees

|                                  | Per term | Annually (3 terms) | Progressing to undergraduate degree Year 2 starting in |
|----------------------------------|----------|--------------------|--|
| 29 September 2014 – 05 June 2015 | £4,100   | £12,300            | Sept 2015  |
| 12 January 2015 – 26 August 2015 | £4,100   | £12,300            | Sept 2015  |

All programmes are subject to a £100 registration fee and a £2,400 refundable deposit.

### Programme content

All students study eight academic modules:

- Business Environment
- Managing Financial Resources and Decisions
- Organisations and Behaviour
- Marketing Principles
- Business Decision Making
- Marketing Intelligence
- Business Skills for Proposals and Pitches
- Study and Communication Skills for Business

Plus English for Academic Purposes

### Who is this programme designed for?

This programme is designed for international students who do not quite have the academic grades and/or English level to start the first year of an undergraduate degree at Coventry University, but have a stronger profile than an IFP student.

All students who successfully complete the IDP are guaranteed progression<sup>1</sup> to Year 2 of a business-related undergraduate degree at Coventry University. This programme is set at level 4, and is equivalent to the first year of an undergraduate business degree in the UK.

### How long will I study for?

The duration of the programme is one academic year (nine months). The year is divided into three terms of seven to eight teaching weeks, one reading week, and an examination week. You will undertake up to 25 hours of classroom-based study per week.

### What will I study?

This programme includes nine core modules, taken by all students throughout the course. These modules are: English, and eight academic modules relating to business and management.

The options available for your chosen pathway at Coventry FoundationCampus are shown in the table on the previous page.

### How will I be assessed?

You will be assessed by a variety of methods during your time with us: the intention is that you have a chance to experience the full range of assessment methods that you might experience at university when you start the second year of your chosen degree.

Assessments will normally include coursework, essays, reports and other structured assignments, oral examination, and unseen written examinations.

“There are about 20 students in most classes, so the interaction between student and teachers is very good. It provides you with the skills necessary to be successful at university.”

Rhondel Dickson

STUDIED  
IDP Business

PROGRESSED TO  
BA (Hons) Business Management



## Programme details

**Length of programme<sup>2</sup>:**  
1, 2 or 3 terms

**English level:**

- 3 terms – from 5.0 IELTS or equivalent, with no single element less than 4.5
- 2 terms – from 5.5 IELTS or equivalent, with no single element less than 5.0
- 1 term – from 6.0 IELTS or equivalent, with no single element less than 5.5

**Academic requirements:**

See page 24 for country-specific requirements

**Minimum age:**

21+

**Hours per week:**

Up to 25

**Pass mark for guaranteed progression:**

- 50%<sup>3</sup> in academic subjects
- 6.5 IELTS or equivalent (internal assessment)

<sup>1</sup> Guaranteed progression is subject to meeting the specified entry criteria.

<sup>2</sup> Extended programmes are available if you do not yet have the required English language level. These programmes last 4 or 5 terms and include English language modules (ELM) followed by the 3 terms of Master's Qualifying required to apply for entry to the first year of your Master's degree. If your language level is below 4.0 IELTS or equivalent then we offer the English Language Preparation Programme (ELPP) – see page 20 for details or visit [www.foundationcampus.com](http://www.foundationcampus.com)

<sup>3</sup> This is the pass mark for progression to most degrees.

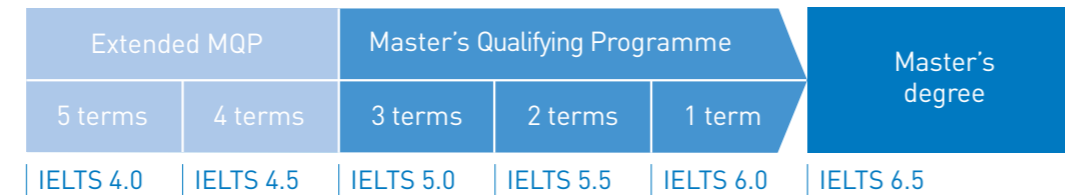
# MASTER'S Qualifying Programme (MQP)



Coventry  
University

The Master's Qualifying Programme is available as a one, two or three-term programme, with guaranteed progression<sup>1</sup> to a wide range of Master's degrees.

### Degree Progression



### Dates and fees

| No. of terms | Programme dates                      | Tuition fees per programme | Progressing to Master's degree starting in |
|--------------|--------------------------------------|----------------------------|--|
| 2            | 08 April 2014 – 23 August 2014       | £7,700                     | Sept 2014                                  |
| 1            | 08 April 2014 – 21 June 2014         | £3,850                     | Sept 2014                                  |
| 1            | 24 June 2014 – 23 August 2014        | £3,850                     | Sept 2014                                  |
| 1            | 29 September 2014 – 12 December 2014 | £4,100                     | Jan 2015                                   |
| 3            | 29 September 2014 – 05 June 2015     | £12,300                    | Sept 2015                                  |
| 3            | 12 January 2015 – 26 August 2015     | £12,300                    | Sept 2015                                  |
| 2            | 12 January 2015 – 05 June 2015       | £8,200                     | Sept 2015                                  |
| 2            | 30 March 2015 – 26 August 2015       | £8,200                     | Sept 2015                                  |
| 1            | 30 March 2015 – 05 June 2015         | £4,100                     | Sept 2015                                  |
| 1            | 15 June 2015 – 26 August 2015        | £4,100                     | Sept 2015                                  |

All programmes are subject to a £100 registration fee and a £2,400 refundable deposit.

### Who is this programme designed for?

This programme is designed to prepare international students for postgraduate study in the UK. The Master's Qualifying Programme will allow you to improve your English while learning the study skills and research methods that you will need during your Master's degree studies. Depending on the length of the programme you study, you may also study academic modules relating to your chosen progression route.

### How long will I study for?

Each term is divided into seven to eight teaching weeks, one reading week and an assessment week. You will undertake up to 25 hours of classroom-based study per week.

### What will I study?

#### 1 term

If you study this programme, you will study two compulsory units of research study skills, including a major project, plus English language.

#### 2 terms

If you study this programme, you will study two compulsory units of research project, personal and professional development, plus English language. You will also choose an additional academic subject unit, depending on your intended progression degree.

#### 3 terms

If you study this programme, you will study two compulsory units of a research project, personal and professional development, plus English language. You will also choose two additional academic subject units, depending on your intended progression degree.

### Academic subject units are arranged by pathway, and include:

#### Business

- Organisations and Behaviour
- Marketing Principles
- Financial Accounting and Reporting
- Business Strategy

#### Life Sciences

- Analysis of Scientific Data and Information
- Pharmacological Principles of Drugs Actions
- Medicinal Chemistry

#### Engineering

- Analytical Methods for Engineers
- Business Management techniques for Engineers
- Mechanical Principles

#### Social Sciences

- Understanding the Learning Process
- Psychology of Human and Criminal Behaviour

Modules are subject to availability and you will be guided onto the best combination of academic modules for your intended degree when you arrive at Coventry Foundation Campus

### How will I be assessed?

Each module will have an assessment schedule, which will be completed by the end of the appropriate term, and will include formative and summative assignments and other assessment tasks. Assessments will be designed to demonstrate learning across the individual modules of the programme and to allow you to experience a wide range of the assessment methods used in UK postgraduate programmes.

Assessments will normally include coursework, essays, reports and other structured assignments, oral examination and unseen written examinations.



## Programme details

**Course length:**  
1, 2 or 3 terms

**English level:**

- For IFP – from 3.0 IELTS or equivalent
- For MQP – from 3.5 IELTS or equivalent
- For IDP – from 4.0 IELTS or equivalent

**Academic requirements:**

See page 24 for country-specific requirements

If your language level is 4.0 IELTS or above (or equivalent) then Extended Foundation, International Diploma and Master's Foundation Programmes are available. These programmes last 4 or 5 terms and include English language modules (ELM) followed by the 3 terms of your main programme. See relevant programme section or website for more details.

**Minimum age:**

17+

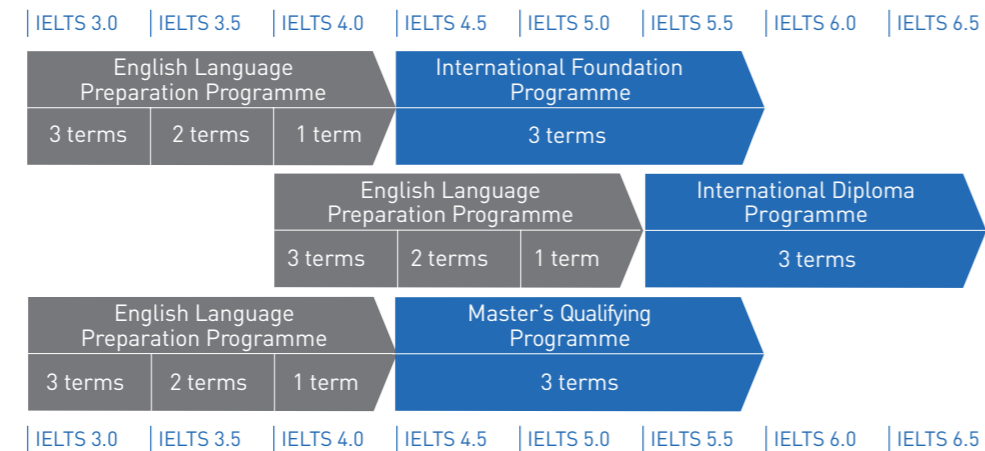
**Hours per week:**

Up to 24

# ENGLISH LANGUAGE Preparation Programme (ELPP)

**Guaranteed progression<sup>1</sup> to the International Foundation, International Diploma and the Master's Qualifying Programmes.**

### Degree progression



### Dates and fees

| No. of terms                  | Term dates                           | Tuition fees per term | Progressing to   |
|-------------------------------|--------------------------------------|-----------------------|--|
| 1, 2 or 3                     | 08 April 2014 – 21 June 2014         | £3,850                | International Foundation or International Diploma or Master's Qualifying |
|                               | 24 June 2014 – 23 August 2014        | £3,850                |  |
|                               | 29 September 2014 – 12 December 2014 | £4,100                |  |
|                               | 12 January 2015 – 20 March 2015      |                       |  |
|                               | 30 March 2015 – 05 June 2015         |                       |  |
| 15 June 2015 – 26 August 2015 |                                      |                       |  |

All programmes are subject to a £100 registration fee and a £2,400 refundable deposit.

### Programme content

Academic English skills including Grammar, Vocabulary, Reading, Writing, Speaking, Listening and project work.

**Note:** These modules are subject to availability.

## Living in COVENTRY

### University accommodation

Living in university accommodation is a fantastic way to start your student life and make new friends quickly. The University offers a wide range of accommodation for both undergraduate and postgraduate students.

They offer an excellent choice depending on your requirements – from catered halls of residence that includes 10 meals per week to self-catered halls and other accommodation options in desirable areas of the city and surrounding areas.



Most of the accommodation is on or within walking distance of the campus.

Rent for university accommodation ranges from £110 for a standard bedroom, to £130 per week for an en-suite single bedroom.

Accommodation guaranteed until 31 July

**To help you budget for your time in Coventry, here is an example of what you can expect to pay for some of the essentials of student life.**

|  |                    |
|--|--------------------|
| Average rent in Coventry University halls of residence   | From £110 per week |
| Membership to the University Sports Centre               | FREE               |
| Internet access in halls                                 | FREE               |
| Breakfast meal deals                                     | £2                 |
| Travel/Transport 'Coventry Student Faresaver Travelcard' | £52 per month      |
| Cinema ticket (with Student Union card)                  | £5.20              |

When you progress to Coventry University you can expect to pay between £10,500 and £12,500 per year in tuition fees, depending on your choice of degree. Please visit [www.coventry.ac.uk](http://www.coventry.ac.uk) for more information.





## LIVING IN COVENTRY

### Raglan House

Raglan House is located opposite the William Morris building at Coventry University and just a 10-minute walk away from Coventry city centre. The bus and train stations are also close by.

The property offers a choice of rooms in 3, 4, 5 and 6-bedroom flats, so you can share with your friends, as well as a range of studios if you'd prefer to live independently.

Wi-Fi, contents insurance and all utility bills are included in the price.

#### Prices

From £5,360 + £250 deposit (40 week contract)

For more information on how to book your accommodation email [liveincoventry@foundationcampus.com](mailto:liveincoventry@foundationcampus.com)

All bookings for Raglan House are subject to Unite terms and conditions.

Outstanding facilities include:

- Wi-Fi
- CCTV
- common room
- bike storage
- laundry



## LIVING IN COVENTRY

### Callice Court

Situated in the heart of Coventry University, just minutes from the city centre, Callice Court is in the perfect location to make the most out of your time in Coventry.

The Coventry University Library and William Morris building are just around the corner, and there's great access to the town centre.

The property offers a choice of en-suite rooms in 2-6 bedroom flats, with shared kitchen and living areas. The property also features studio apartments and one or two bedroom flats, so you can pick the room to suit your needs.

All properties include Wi-Fi access, contents insurance and all bills in the price so you don't have to worry about any unexpected costs.

Outstanding facilities include:

- Wi-Fi
- parking
- common room
- bike storage
- laundry

#### Prices

From £5,600 + £250 deposit (40 week contract)

For more information on how to book your accommodation email [liveincoventry@foundationcampus.com](mailto:liveincoventry@foundationcampus.com)

All bookings for Callice Court are subject to Unite terms and conditions.





## Academic entry requirements

|            | International Foundation  | International Diploma   |
|------------|---|---|
| Albania    | Completion of high school education with Certificate of Maturity with pass grades   | Completion of high school education with Certificate of Maturity with good grades   |
| Angola     | Completion of Secondary School Certificate (Grade 12) with pass grades  | Completion of Secondary School Certificate (Grade 12) with good grades  |
| Armenia    | Certificate of Secondary Education (Mijnakarg Yndhanur Krtoutian Attestat) with pass grades                                 | Certificate of Secondary Education (Mijnakarg Yndhanur Krtoutian Attestat) with good grades   |
| Azerbaijan | Certificate of Secondary Education (Attestat) with pass grades  | Certificate of Secondary Education (Attestat) with good grades  |
| Bahrain    | Tawjihiya/Thanawihya/General Secondary School Certificate with pass grades  | Tawjihiya/Thanawihya/General Secondary School Certificate with good grades  |
| Bangladesh | Senior School Certificate/Higher Secondary Certificate with pass grades   | Senior School Certificate/Higher Secondary Certificate with good grades   |
| Botswana   | Cambridge Overseas School Certificate with pass grades  | Cambridge Overseas School Certificate plus satisfactory completion of one year of additional study  |
| Brunei     | Brunei Cambridge O-level with pass grades   | Brunei Cambridge A-level High school plus satisfactory completion of one year of additional study with pass grades  |
| Cameroon   | Baccalaureat or Certificat de Probation with pass grades in relevant subjects   | Completion of high school education plus satisfactory completion of one year of additional study  |
| China      | Completion of Senior Secondary School Year 3 with 60% average/Completion of Senior Secondary School Year 2 with 70% average | Completion of Senior Secondary School Year 3 with 70% average or completion of one year of university with pass grades  |
| Gambia     | West African School Certificate or Senior School Certificate with pass grades   | West African School Certificate or Senior School Certificate with good grades OR Completion of high school education plus satisfactory completion of one year of additional study |
| Georgia    | Certificate of Secondary Education with pass grades   | Certificate of Secondary Education with good grades   |
| Ghana      | West African School Certificate or Senior School Certificate with pass grades   | West African School Certificate or Senior School Certificate with good grades OR Completion of high school education plus satisfactory completion of one year of additional study |
| Hong Kong  | Successful completion of Form 5 with pass grades in relevant subjects OR HKDSE with passes in 3 relevant subjects           | Successful completion of HKDSE with grades of 3-3-3 or higher   |
| India      | Completion of Year X with average 65%<br>Completion of Year XI with average 50%<br>Completion of Year XII with average 40%  | CBSE or ICSE with 50% average   |
| Indonesia  | SMU 2 with average of 7.0<br>SMU 3 with average of 6.5  | Completion of SMU 3 with an average grade 7.0 OR<br>Completion of high school education plus satisfactory completion of one year of additional study                              |
| Iran       | Successful completion of High School Diploma with pass grades   | Successful completion of High School Diploma with good grades/Konkur with pass grade  |
| Japan      | Upper Secondary School Year 2 with GPA 2.5<br>Upper Secondary School Year 3 with GPA 2.0                                    | Upper Secondary School Certificate with GPA Grade 3.0 OR<br>Completion of high school education plus satisfactory completion of one year of additional study                      |
| Jordan     | Tawjihiya/General Secondary School Certificate with pass grades   | Completion of first year of local degree with pass grades<br>Part study of Higher/Technical Diploma with pass grades  |
| Kazakhstan | Diploma of Completed Secondary Education (Attestat) with pass grades  | Diploma of Completed Secondary Education (Attestat) with good grades  |
| Kenya      | East African School Certificate/Cambridge Overseas School Certificate/KCSE with pass grades                                 | East African School Certificate/Cambridge Overseas School Certificate/KCSE with good grades   |
| Kuwait     | Tawjihiya/Thanawihya/General Secondary School Certificate with pass grades  | Tawjihiya/Thanawihya/General Secondary School Certificate with good grades  |
| Lebanon    | Lebanese Baccalaureate or French Baccalaureate with pass grades   | Completion of high school education plus satisfactory completion of one year of additional study  |
| Libya      | Secondary Education Certificate   | Completion of high school education plus satisfactory completion of one year of additional study  |
| Macau      | iGCSE/O-levels/ Completion of Form 5 or Senior Middle 2 with average grades   | Completion of Form 6/Senior Middle School/Grade 12 with pass grades   |
| Malaysia   | SPM (Malaysia Certificate of Education) (or forecast) with average grades/UEC with pass grades                              | STPM or A-levels/UEC with pass grades in relevant subjects<br>STPM plus satisfactory completion of one year of additional study   |
| Myanmar    | High School Matriculation with pass grades in relevant subjects   | High School Matriculation with good grades  |

|   | International Foundation  | International Diploma   |
|---|---|---|
| Nigeria   | West African School Certificate or Senior School Certificate with pass grades   | West African School Certificate or Senior School Certificate with good grades OR Completion of high school education plus satisfactory completion of one year of additional study   |
| Oman  | Tawjihiya/Thanawihya/General Secondary School Certificate with pass grades  | Tawjihiya/Thanawihya/General Secondary School Certificate with good grades  |
| Pakistan  | Higher Secondary Certificate with pass grades   | Higher Secondary Certificate with good grades   |
| Qatar   | Tawjihiya/Thanawihya/Senior Schooling Certificate with pass grades  | Tawjihiya/Thanawihya/General Secondary School Certificate with good grades  |
| Russia  | Certificate of Secondary Education with good grades in relevant subjects  | Certificate of Secondary Education with excellent grades in relevant subjects   |
| Saudi Arabia  | Tawjihiya/Thanawihya/General Secondary School Certificate with pass grades  | Tawjihiya/Thanawihya/General Secondary School Certificate with good grades  |
| Singapore   | Singapore/Cambridge O-level/iGCSE with pass grades  | Singapore/Cambridge A-level or O-levels plus satisfactory completion of two years' study towards Polytechnic Diploma/Polytechnic Certificate/Polytechnic Advanced Diploma with pass grades  |
| South Korea   | Senior High School 2 with average 4th grade in relevant subjects/Senior High School 3 with average 6th grade in relevant subjects/School Leaving Certificate with average 60% | High School Diploma with 4th Grade  |
| Sri Lanka   | O-levels with average grades  | Completion of GCE A-levels OR Completion of high school education plus satisfactory completion of one year of additional study  |
| Taiwan  | Senior High School Year 2 with 60% average/Senior High School Year 3 with 55% average   | Senior High School Leaving Certificate with 70% average OR<br>Completion of high school education plus satisfactory completion of one year of additional study  |
| Thailand  | Mathayom (MAW) 5 with GPA 2.5<br>Mathayom (MAW) 6 with GPA 2.0  | Mathayom (MAW) 6 with GPA 2.5 OR<br>Completion of high school education plus satisfactory completion of one year of additional study  |
| Turkey  | Successful completion of Deviet Lisen Birtme Diploması OR High School Year 3 with pass grades   | Successful completion of High School Year 3 with good grades  |
| Uganda  | Ugandan Certificate of Education with pass grades   | Ugandan Certificate of Education with good grades   |
| United Arab Emirates  | Tawjihiya/Thanawihya/General Secondary School Certificate with pass grades OR Technical Diploma: min. 60%   | Tawjihiya/Thanawihya/General Secondary School Certificate with good grades  |
| Uzbekistan  | Diploma of Completed Secondary Education with pass grades   | Diploma of Completed Secondary Education with good grades   |
| Vietnam   | Completion of Year 12 with average Grade 5.0<br>Completion of Year 11 with average Grade 7.0  | Completion of Year 12 with average Grade 7.0  |
| Zambia  | Zambia School Certificate with pass grades  | Zambia School Certificate with good grades  |
| Zimbabwe  | ZIMSEC O-level – 5 passes A–C inc. English and Maths  | GCE A-levels – 2 passes D grade average   |
| International curricula - International Baccalaureate (IB), GCE A-levels, Canadian, USA, Australian high school | We will consider all international high school results where students have achieved average grades in the subjects relevant to their intended Foundation course.              | We will consider all international high school results where students have achieved average grades in the subjects relevant to their intended Foundation course.<br>We also consider students who have satisfactorily completed a recognised Foundation course. |
| Master's Qualifying   |   |   |
| All   | Successful completion of Bachelor's degree or equivalent, from a recognised university.   |   |

Academic entry requirements listed above should be used as a guide only. Suitability for the programme will be assessed on a case-by-case basis. If your country is not listed, please contact [admissions@foundationcampus.com](mailto:admissions@foundationcampus.com)

# NEXT STEPS

## STEP ONE

Submit your application by one of the following methods:

**Online:**  
www.foundationcampus.com

**Email:**  
admissions@foundationcampus.com

**Fax:**  
+44 (0)1223 346181

**Post:**  
Admissions Office, FoundationCampus,  
Kett House, Station Road, Cambridge,  
CB1 2JH, United Kingdom

Please remember to include all relevant documentation:

- Academic transcripts (with translations if not originally in English)
- Evidence of English level
- Passport

Other documentation may be required depending on the course, Admissions will advise.

## STEP TWO

Our Central Admissions team will review your application.

- We will send you an offer letter which will list any outstanding conditions. We will remove any conditions that have already been met. If we think the course is not right for you, we will suggest an alternative.
- If we have any queries about your application, our Central Admissions team will contact you for further information.

## STEP THREE

To accept your place on the course you will need to meet all the remaining conditions, including payment of the deposit/registration fee or proof of government sponsorship. Only once all conditions have been met, can your place be confirmed, although once the deposit is paid we will hold a place for you.

- Please note that if you require a visa to study with us, you may need to provide additional evidence to comply with the visa regulations in the country of study. These are the requirements of the government and not of FoundationCampus. Your assistance in meeting these requirements is much appreciated.

## STEP FOUR

Once you have paid your deposit and met all the conditions of offer, we will confirm your place and send you a CAS (Confirmation of Acceptance to Study) or a Confirmation of Enrolment (CoE) if you do not need a CAS. If you need a visa, you will need to use your CAS/CoE to support your visa application. Please note a CAS can only be used 3 months before the start of the course.

- We will send you pre-arrival information.
- The accommodation application form will be included in the pre-arrival information we will send you. You should complete the form, selecting your preferred option, and return it to Coventry FoundationCampus by email to liveincoventry@foundationcampus.com

## STEP FIVE

You will then need to apply for a visa if you require one to study in the UK. It is your responsibility to obtain a visa before you travel to join the course. If you do not have a valid visa, you will not be able to join the course so please make sure you apply as soon as possible.

You will need to pay at least the first term's tuition fees before you begin your programme of study at FoundationCampus.

- You should arrive on the weekend before the arrival date; please check your CAS statement or Confirmation of Enrolment for further details.
- Birmingham International is the closest airport to Coventry FoundationCampus. There are various routes that you can take from Birmingham by train, bus or taxi.

## STEP SIX

### TERM DATES

| Term | Term Dates                           |
|------|--------------------------------------|
| 1    | 29 September 2014 – 12 December 2014 |
| 2    | 12 January 2015 – 20 March 2015      |
| 3    | 30 March 2015 – 05 June 2015         |
| 4    | 15 June 2015 – 26 August 2015        |



### 3. DETAILS OF COURSE(S) FOR WHICH YOU WISH TO APPLY

Please give details of the FoundationCampus programme for which you are applying. Please also state the subject and study level you are aiming for (undergraduate or Master's degree) alongside the proposed year of study.

|  |  |   |
|--|--|---|
| University degree you wish to progress to e.g. – BA (Hons) Business Management |  |   |
| FoundationCampus programme:  | <input type="checkbox"/> International Foundation Programme<br><input type="checkbox"/> Master's Qualifying Programme  | <input type="checkbox"/> International Diploma Programme<br><input type="checkbox"/> English Language Preparation Programme |
| Date you want to start the programme: Month/Year                               | <input type="checkbox"/> Sept <input type="checkbox"/> Jan <input type="checkbox"/> April <input type="checkbox"/> June<br><input type="checkbox"/> 2014 <input type="checkbox"/> 2015 | The number of terms you wish to study:  |

### 4. ACADEMIC HISTORY

Have you ever studied in the UK before?  Yes  No If you answered yes to the question, please provide the following details and a copy of any previous UK visas:

|   |                  |
|---|------------------|
| Name of school / institution (in full): |                  |
| Date of study:                          | Course of study: |

### 5. DOCUMENTS

Please enclose the following and tick to confirm you have included them.

|  |  |
|--|--|
| <input type="checkbox"/> Completed and signed application form | <input type="checkbox"/> Copies of transcripts (with certified English translated copies if in any other language) |
| <input type="checkbox"/> Academic qualifications               | <input type="checkbox"/> Copy of passport and copies of any previous UK visas                                      |

### 6. USE OF AGENTS

Have you used an educational agent during your application process?  Yes  No  
If no, please proceed to section 7. If yes, please complete the details below and see section 15 of the Conditions of Enrolment which can be found on the FoundationCampus website at www.foundationcampus.com

|   |  |
|---|--|
| Name of agent (in full):                            |  |
| Name of contact person at agency and email address: |  |
| Agent address (in full):                            |  |

### 7. HOW DID YOU HEAR ABOUT US?

Please indicate how you heard of these courses (Please tick)  Agent  Exhibition  Family  Internet  Other (please specify) \_\_\_\_\_

### 8. DECLARATION

I declare that I am applying to FoundationCampus as a genuine student and that the information and supporting evidence and academic documents I have provided are true copies. I understand that by signing this declaration I have read, understood and agreed to the terms and conditions and fees of study at Coventry FoundationCampus as outlined on the FoundationCampus website www.foundationcampus.com/en/about/tandc and agree to comply with UKBA regulations at the time of application and during my course of study. If you do not have access to the website or would like a written copy of the conditions of enrolment, you can request these from FoundationCampus Central Admissions at admissions@foundationcampus.com

In order to deliver your education and protect your welfare, Cambridge Education Group (CEG) will collect, keep and otherwise process personal data, including sensitive personal data that relates to you and your circumstances. This will include your name and contact details, and those of your parents, guardians, agent or sponsor. We will also keep data about your education, health, welfare, accommodation, travel, passport, visa, finances and fees.

We will keep this information secure at all times and we will share it within CEG as necessary to run our business, deliver your education and ensure your safety. We will also release this information where it is legally required or lawful to do so, or in the event of a medical emergency if it is necessary to protect your health or the health of others. We will provide reports to your agent, parents or guardian on your progress, and also where necessary with our academic partners such as universities. Some of our data transfers may transfer your data to other countries.

- Do you consent to your personal data, being stored processed and released by CEG in this way?
- Do you consent to your sensitive personal data including health, welfare, nationality, ethnicity, religious and other data being stored, processed and released in this way?
- Do you consent to the reasonable use of your details and academic achievement to be used for marketing purposes?

Signature of Applicant \_\_\_\_\_ Date \_\_\_\_\_

Parent or Guardian Signature \_\_\_\_\_ Date \_\_\_\_\_

If applicant is not the fee payer or is under 18



# COVENTRY FOUNDATIONCAMPUS APPLICATION FORM

Apply ONLINE at [www.foundationcampus.com](http://www.foundationcampus.com) or return this form to:  
Admissions Office, FoundationCampus, Kett House, Station Road  
Cambridge, CB1 2JH, United Kingdom  
Tel: +44 (0)1223 345698 Fax: +44 (0)1223 346181 Email: [admissions@foundationcampus.com](mailto:admissions@foundationcampus.com)

Please write neatly using BLOCK CAPITALS in black ink or typescript. Incomplete application forms submitted without ALL the supporting documents will delay the decision process.

## 1. PERSONAL DETAILS

|                                |                                       |
|--------------------------------|---------------------------------------|
| Title (Mr/Mrs/Miss/Ms etc)     |                                       |
| First name(s)                  | Family name                           |
| Date of birth (dd/mm/yy)       | Age on entry                          |
| Nationality (as passport)      | Male/Female                           |
| Country of permanent residence |                                       |
| Home address                   | Correspondence address (if different) |
|                                |                                       |
| Postcode                       | Postcode                              |
| Country                        | Country                               |
| Mobile (incl. country code)    | Mobile (incl. country code)           |
| Telephone (incl. country code) | Telephone (incl. country code)        |
| Student email                  |                                       |

Do you have any criminal convictions?  Yes  No (Your enquiry cannot be processed if you do not complete this section)

## 2. DISABILITY/SPECIAL NEEDS

FoundationCampus will conduct a needs analysis with you to determine any support that may be required, and to ensure that your personal needs can be met wherever possible. However, failure to disclose a specific requirement may result in us not being able to meet your needs.

Please state any condition which might necessitate special arrangements or facilities. Consult the Notes for guidance at [www.foundationcampus.com/en/about/tandc](http://www.foundationcampus.com/en/about/tandc)

|  |  |
|--|--|
|  |  |
|  |  |

## NOTES (FOR OFFICE USE ONLY)

|  |
|--|
|  |
|--|

## Cambridge Education Group

Kett House, Station Road  
Cambridge CB1 2JH, United Kingdom

**Telephone:**  
+44 (0)1223 345698

**Fax:**  
+44 (0)1223 346181

**Email:**  
[admissions@foundationcampus.com](mailto:admissions@foundationcampus.com)

**Web:**  
[www.foundationcampus.com](http://www.foundationcampus.com)

**Facebook:**  
[www.facebook.com/foundationcampus](http://www.facebook.com/foundationcampus)



## Overseas offices:

**Brazil**  
+55 (0) 15 998 54 5454  
[brasil@ceg-uk.com](mailto:brasil@ceg-uk.com)

**China**  
+86 10 5869 0568  
[china@ceg-uk.com](mailto:china@ceg-uk.com)

**Central Asia**  
+7 926 007 3891  
[centralasia@ceg-uk.com](mailto:centralasia@ceg-uk.com)

**Hong Kong, Macau, Taiwan**  
+852 2882 4046  
[hongkong@ceg-uk.com](mailto:hongkong@ceg-uk.com)

**Japan**  
+81 50 5809 9582  
[japan@ceg-uk.com](mailto:japan@ceg-uk.com)

**Korea**  
+82 2 2052 1904  
[korea@ceg-uk.co.kr](mailto:korea@ceg-uk.co.kr)

**Latin America**  
+52 (1) 81 1778 9091  
[latinamerica@ceg-uk.com](mailto:latinamerica@ceg-uk.com)

**Nigeria**  
+234 81 8527 9072  
[nigeria@ceg-uk.com](mailto:nigeria@ceg-uk.com)

**Pakistan**  
+92 345 1444 455  
[pakistan@ceg-uk.com](mailto:pakistan@ceg-uk.com)

**Russia**  
+7 495 223 1348  
[russia@ceg-uk.ru](mailto:russia@ceg-uk.ru)

**South East Asia**  
+60 (0) 19 790 0236  
[southeastasia@ceg-uk.com](mailto:southeastasia@ceg-uk.com)

**Vietnam**  
+84 91 4849 288  
[vietnam@ceg-uk.com](mailto:vietnam@ceg-uk.com)

Get in touch,  
we'd love to hear from you.



Information in this brochure is correct at time of print on 1 March 2014. FoundationCampus and the University Partner reserve the right to alter, reschedule or close courses which do not remain viable, students will be informed.

  
**Coventry  
University**  
**FOUNDATIONCAMPUS**