

Pathways at

# BRUNEL UNIVERSITY LONDON 2014/15

London, United Kingdom  
INTERNATIONAL STUDENT GUIDE



## Why study at LBIC?

- Brunel University London is ranked top in London, 6th in the UK and 35th in the world in the Times Higher Education 2012 world ranking of the top 100 universities founded in the last 50 years.
- Students at LBIC are taught in small classes and provided with additional help and support, providing the perfect transition to the next stage of studies at Brunel.
- Over 2,500 students have progressed from LBIC and gone on to graduate with full bachelor's or master's degrees from Brunel.
- Brunel graduates are highly sought after by employers and many now enjoy successful careers at some of the world's top companies.
- An impressive 74 percent of students who began their pathway at LBIC achieved an undergraduate degree classification of 2:2 or above in 2013.
- Brunel was awarded the THE Business School of the Year Award 2013.



# YOUR PATHWAY TO SUCCESS

London Brunel International College (LBIC) is your pathway to a degree at Brunel University London. LBIC is part of the global Navitas Group, an internationally recognised education provider with the knowledge and resources of staff in more than 120 colleges and campuses worldwide.

LBIC is proud of its many graduates who have completed Brunel degrees and embarked on successful careers in some of the world's top companies. We now look forward to providing you with a high quality education that will help you achieve your own career objectives and personal goals.



## Message from the Vice-Chancellor and President of Brunel University London

Brunel University London has been working in partnership with LBIC (formerly LIBT) since 2003 and thousands of students have progressed successfully from LBIC to bachelor's and master's degree programmes at Brunel.

Brunel graduates display a range of key attributes that are very important to employers, including intellectual rigour, project management skills, teamwork and adaptability.

This means that our graduates are in great demand from high quality employers.

I encourage you, as a future LBIC student, to maximise your UK learning experience and make the most of Brunel's excellent campus facilities and services.

**Professor Julia Buckingham**  
Vice Chancellor and Principal  
Brunel University London



## Message from the College Director/Principal of LBIC

Every year, hundreds of students trust LBIC to provide them with the skills and knowledge that they require to become confident and successful learners.

As an Affiliate College of Brunel University London, LBIC provides access to all the facilities of a world class university, supported through small classes and additional teaching hours that ensure that you have every opportunity to achieve your full potential.

At LBIC we are proud of the many students who have progressed on to complete their studies at Brunel and have embarked on highly successful careers.

I look forward to welcoming you to London.

**Christine Vincent**  
College Director/Principal  
LBIC

# Brunel University London: a global university

Brunel University London is recognised throughout the world for its excellent academic standards, its highly employable graduates and its practical and entrepreneurial approach to teaching.

Since its establishment in the 1960s, Brunel University London has grown to become the confident, modern and well-ranked institution that it is today. A well-known and respected name on the UK higher education scene, the university's reputation reflects the outstanding technical proficiency, creativity and commitment of Isambard Kingdom Brunel, the ground breaking British engineer after whom it is named. This reputation is certainly well deserved, as the university remains at the forefront of many important advances and developments in research and enterprise.

## Highly ranked university

In the top two percent of global academic institutions, Brunel consistently ranks well and in 2012 was ranked top in London, 6th in the UK and 35th in the world, according to the Times Higher Education ranking of the top 100 universities founded in the last 50 years. In addition, many of the university's individual schools are highly recognised, with one excellent example being the Brunel Business School, which won the prestigious 2013 Times Higher Education Business School of the Year award.

## Work placements

The majority of undergraduate degree programmes at Brunel offer the option a paid year-long work placement sandwich year. This provides an excellent opportunity to put into practice the theory learned during studies, while also providing excellent preparation for the world of work following graduation.

## Highly employable graduates

The University's intention is to provide you with a world-class education that will prepare you for a highly successful career upon graduation. Brunel graduates have previously gone on to work for some of the world's leading companies, including Disney, IBM, Lloyds TSB, Coca-Cola, the Ford Motor Company, Morgan Stanley and O2, and taking advantage of the university's excellent provisions can provide you with similar opportunities too. An on-campus careers

centre can offer help and assistance with both part-time work and graduate careers, and such is the University's focus on employability that the Times Good University Guide recently found that graduates enjoyed the 13th highest starting salaries of all the UK's 120 universities.

## Outstanding campus

Brunel is a true campus university, with teaching and learning facilities, student accommodation and sports amenities contained within a safe, secure and accessible environment. In fact, the university has spent £300 million redeveloping the campus in recent years as an investment for the future. As a result, today's LBIC and Brunel students can enjoy some of the best university facilities in the UK. Wireless internet is also available throughout the campus and a large, ultra-modern library is accessible 24 hours a day.

## A diverse community

Over 15,000 students study on campus at Brunel University London, including 2,500 international students from over 110 different countries. Such a multicultural environment will provide you with a fantastic opportunity



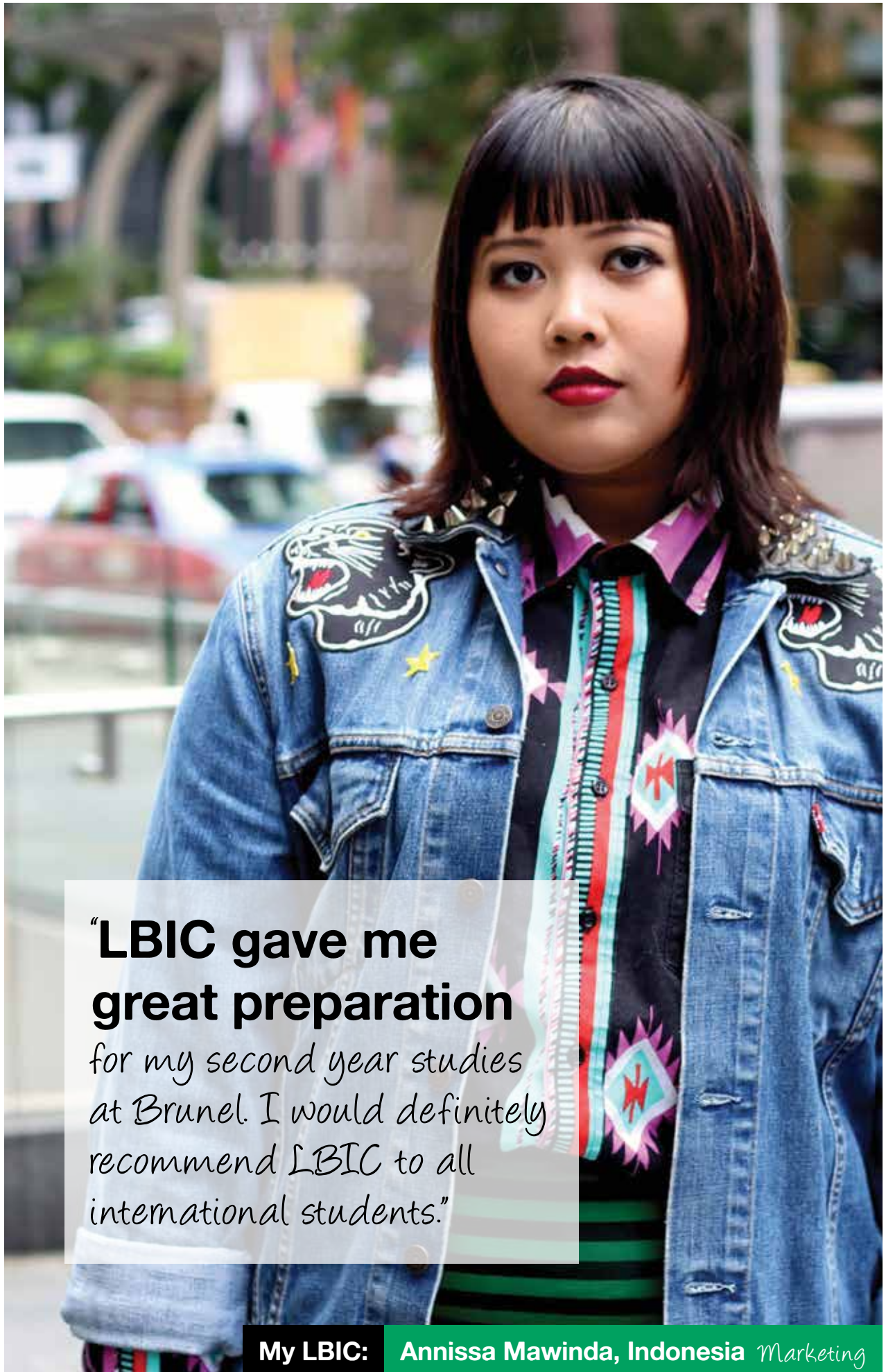
to mix with classmates from all parts of the world, while also experiencing true British life as you live and study in the UK.

With such a diverse community on campus, there are numerous cultural and religious groups and clubs available to join, as well as a multitude of sporting and other interest societies that provide not only a valuable extra-curricular experience but also the opportunity to form lifelong friendships and connections.

## Sporting excellence

Brunel's sporting facilities are truly outstanding and boast an excellent range of gyms, athletic provisions, all weather football and hockey pitches, as well as a host of other facilities to cater to almost every sport available. In fact, so good are the sporting facilities on offer that sprinting gold medallist Usain Bolt used Brunel as the base for his preparations for the nearby 2012 Olympic Games, while other world famous sportsmen and women can often be seen on campus.





**“LBIC gave me great preparation**  
*for my second year studies at Brunel. I would definitely recommend LBIC to all international students.”*

**My LBIC:** Annissa Mawinda, Indonesia *Marketing*

# Why choose LBIC at Brunel University London?

LBIC will provide you with the tools you need to be successful in your studies. Our high quality service will allow you to develop your full potential and our dedicated academic and student support staff will be with you every step of the way.

## LBIC CREDENTIALS

LBIC operates as an affiliate college of Brunel University London, and all students that embark on a course of study with LBIC are sponsored under the Brunel University London licence number. Students will receive a visa from the UKBA under Brunel University London for the entire duration of their studies.

Brunel University London  
Sponsor Licence  
Number: OBT931EY6

### Full Brunel University London access

LBIC students are Brunel students, meaning you will have full access to all of the facilities that this excellent university has to offer. From teaching and learning facilities including an extensive library; dedicated careers services and top-of-the-range computer labs; to sports clubs and societies; through to a huge number of social amenities including on-campus restaurants, cafés and nightclubs, LBIC students have access to it all.

### Supportive learning environment

As an LBIC student you will enjoy small class sizes and one-to-one tutorial sessions. This will allow you to successfully bridge the gap between your previous studies and Brunel, providing you with the skills, knowledge

and expertise that will enable you to excel at your university studies and ultimately graduate with an internationally recognised bachelors or masters degree from Brunel University London.

### Study accredited modules

LBIC's courses and modules are designed in partnership with the University's academic staff, meaning that from day one at LBIC you will be learning knowledge and skills that will give you a distinct advantage when you have completed your studies at LBIC and progressed on to Brunel University London.

### Multicultural environment

LBIC boasts students from countries throughout the globe, all learning and socialising together, and the experience and future connections that this provides should not be underestimated. LBIC actively ensures diversity among its students, meaning that you will always find someone with whom to reminisce about home, while also ensuring you are exposed to a truly international – and a truly British university experience.

**Zone A**

- Chadwick
- Gaskill
- Health Economics
- Research Group
- School of Arts (taught programmes)
- Marie Jahoda
- School of Social Sciences (BA, PG and research offers)
- Meeting House

**Zone B**

- Arts Centre
- Bragg
- Experimental Techniques Centre
- Brunel University Press

**Zone C**

- Banmanshan Centre
- Assistive Technology Centre
- Cook Office
- Disability and Dyslexia Service
- Job Shop
- Placement and Careers Centre
- Student Centre
- West London Assessment Centre
- Hamilton Centre
- Brunel Hospitality
- Brand Volunteers
- Campus Shops
- Students' Union
- Lecture Centre
- Conference Office
- Media Services

**Zone D**

- Recital (Robert) Room
- APDU
- Michael Sterling
- Research Support and Development Office
- School of Engineering and Design (PG taught and research programmes)
- Wilfred Bowen
- Alumni Estates (Operations and Resources)
- Finance
- Marketing
- Registry/Admissions
- Security

**Zone E**

- Antonin Artaud
- Howell
- Powell Theatre (Howell Centre)
- Joseph Lowe
- Distribution Centre
- Maintenance
- Medical Centre
- Tower A
- Brunel Centre for Advanced Solidification Technology
- Design Exhibition Centre
- School of Engineering and Design (UG taught programmes)
- Tower B
- BT Labs
- Tower C and D

**Zone F**

- Accommodation Office
- Counselling Service
- Housing Office

**ACCOMMODATION**

| Zone A                 | Zone E                           | Zone F               |
|------------------------|----------------------------------|----------------------|
| 1 Isambard Complex A-Q | 13 Lancaster Complex             | 3 Selkirk Hall       |
| 2 Galweith Hall        | 14 Maria Grey Hall               | 6 Chepstow Hall      |
| 3 Fleming Hall         | 15 Lancaster Suite Lodge and Spa | 7 Clifton Hall       |
| 4 Mill Hall            | 16 Southwark Hall                | 14 Lancaster Complex |
|                        | 17 Stockwell                     | 8 Bishop Hall        |
|                        |                                  | 9 Kilmorey Hall      |
|                        |                                  | 10 Lucy Hall         |
|                        |                                  | 11 St Margarets Hall |
|                        |                                  | 12 Faraday Complex   |
|                        |                                  | 18 Lancaster Complex |
|                        |                                  | 18 Gordon Hall       |

**Zone G**

- Brunel Science Park
- Elliott Jacques
- Brunel Law School
- Gardner
- GLEAPS
- Russell
- Brunel International (including LBTI)
- International Pathways and Language Centre
- MBA

**Sports Park**

- Athletics Arena
- Netball Courts
- Sports Pavilion
- Synthetic Pitches
- Tennis Courts

Map last updated 18/09/12. To download the latest version visit [www.brunel.ac.uk/about/campus/directions](http://www.brunel.ac.uk/about/campus/directions)

A photograph of a young Black man with short hair, smiling broadly. He is wearing a light blue and white vertically striped short-sleeved button-down shirt. He is leaning against a white metal railing. The background is a plain, light-colored wall.

## "Brunel is close to central London

and some of the best tourist attractions in the world. Also, when I saw Usain Bolt using the campus sports facilities I knew I was in the right place!"

# LBIC: Your pathway to Brunel University London

LBIC provides alternative pathways to Brunel University London for students who may not qualify for direct entry to a degree programme and seek a supportive learning environment. LBIC bridges the gap to make sure you reach your goal of being a Brunel graduate.

LBIC operates as an affiliate college of Brunel University London, and all students that embark on a course of study with LBIC are sponsored under the Brunel University London licence number. That means you will receive a visa from the Home Office for your entire period of study at both LBIC and Brunel.

## Undergraduate pathways

An undergraduate pathway is a single course comprising four stages of study. When you successfully complete all stages of the pathway, you will be awarded a bachelor's degree from Brunel University London.

### University Foundation

The transition from high school to university is a big step, perhaps the most important in your life. At LBIC we understand this and will provide you with ongoing guidance and support so you can develop the skills and knowledge you need to succeed in your studies. This programme will help you better understand what is expected from you as a university student and will prepare you to ultimately graduate with your chosen degree. This stage usually comprises four modules in your subject area each semester, including an academic study skills module. Each module is tailored to your chosen undergraduate degree. In every stage of your studies at LBIC and Brunel you will receive extra support through tutorials and individual consultations with teachers, and will have access to computer laboratories.

Assessment for most modules is continuous, and includes tests, assignments and case study analysis. All modules have a final examination.

### First Year University Studies

Stage 2 of the undergraduate pathway is known as First Year University Studies and is taught at LBIC (with the exception of Law and Engineering). During this stage you will experience the first-year curriculum of a Brunel degree, but in smaller class sizes and with extra academic contact hours. The teaching and learning experience will enable you to fully develop your knowledge and understanding of each module to prepare you for Stage 3 (Second Year University Studies) and Stage 4 (Final Year University Studies). You will normally undertake four modules each semester, which mirror the curriculum taught at Brunel.

Assessment for most modules is continuous, and includes tests, assignments and case study analysis. Most modules have a two hour final examination.

### Second and Final Year University Studies

Stage 3 and 4 of the undergraduate pathway is the standard second and final year of your degree, which is taught at Brunel. You must successfully complete your First Year University Studies at LBIC to progress to Brunel and enter this stage.



## Postgraduate pathways

A postgraduate pathway is a single course comprising two stages of study. When you successfully complete the pathway you will be awarded a master's degree from Brunel.

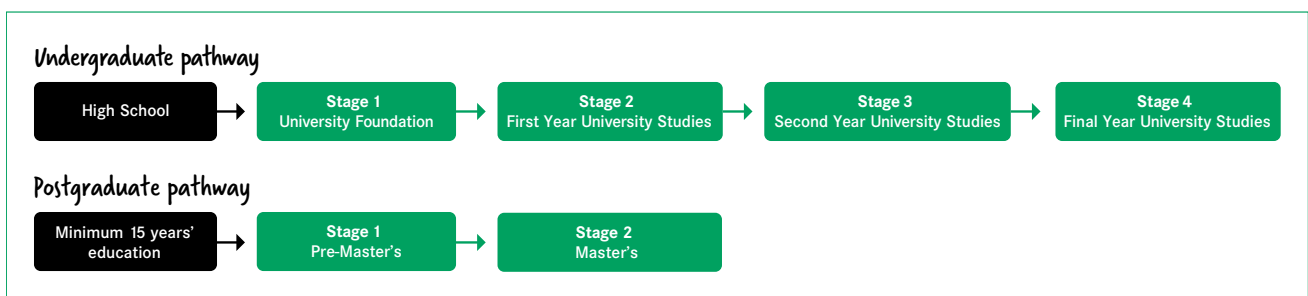
### Pre-Master's

The Pre-Master's has been designed to prepare international students who have not qualified for direct entry to the University's master's degrees.

Undertaking a Pre-Master's course will give you time to adjust to the rigorous research and independent study requirements of a postgraduate degree. This will ensure you get the most out of your master's studies at Brunel and go on to achieve graduation in your chosen field.

### Master's

Your master's degree is Stage 2 of the postgraduate pathway, and is taught at Brunel.





# Our commitment to student support

LBIC will support you on the journey to becoming an independent learner. A range of support services and programmes are available to ensure you achieve your academic potential while developing personally and maintaining a balanced lifestyle. The services and programmes outlined below are available to all students and are provided at no additional cost.



LBIC is dedicated to providing a rewarding and fulfilling student experience and we encourage you to use all the support services available and to contact our friendly staff for advice and assistance whenever you need it. Staff at LBIC are always happy to help with any difficulty or query you may have, no matter how big or small.

## Orientation programme

LBIC offers a full orientation and enrolment programme to new students, ensuring you are fully prepared for your new life in London. Some of the things that may seem easy at home can prove a little different in the UK, so LBIC's orientation programme will assist with getting you settled in and will enable you to begin your studies in comfort. Assistance with opening a bank account, getting a mobile phone and advice on where to get specific foods will be offered, as well as a whole range of other information that will help you adjust quickly to life in the UK. In addition, the enrolment programme will give you the opportunity to meet your new classmates and discover more about the social activities available.

## Academic assistance

LBIC's main purpose is for you to get an excellent beginning to your University studies, and the dedicated team of academic and student support staff will ensure that you have all the tools at your disposal to enable you to achieve your full potential. The LBIC student support team is there to assist you and is able to provide personalised academic support, including a full Student in Jeopardy programme, to enable you to get back on track with your studies.

## 24/7 emergency contact

LBIC is located on the Brunel campus, a secure and safe student environment. An experienced student services team is available throughout the day at LBIC for any help or advice you may need, and out of office hours, 24 hours a day, it is possible to call a dedicated LBIC emergency phone in case of any urgent issues.

## Activities at LBIC

Although you will be at LBIC primarily for the purposes of academic study, it is still possible to involve yourself in an extensive and varied social life. LBIC runs a range of extra-curricular activities, including sports teams, shopping trips and sightseeing tours around the UK and, with everything that the University and London have to offer, you will certainly find something of interest for when you are not studying.

## Student Representative Group

Students at LBIC play an important role in the direction of the college and the Student Representative Group enables you, the student, to represent your peers. Regular meetings between staff and student representatives are held and provide the opportunity for the student voice to be heard, contributing to the future of your experience at LBIC.



# London: the world in one city

London is one of the world's most popular study destinations and boasts a dynamic and exciting mix of history, culture and innovation. Famous throughout the globe for its iconic landmarks, world-class shopping and top sporting attractions, there really is nowhere in the world as exciting as London!



LBIC and Brunel University London are located in Uxbridge in west London, within easy access of central London but also close to the peaceful countryside of nearby Windsor or Oxford. Uxbridge is also only four miles from London Heathrow, the UK's busiest airport, and excellent transport links, including the London Underground, mean that world famous attractions such as the London Eye, Buckingham Palace and Wembley Stadium are just a short distance away.

## Something for everyone

London offers something for everyone, from shopping and history to music and food, and as an LBIC student you will fall in love with the magic and the vibrancy of this world famous city. If, for any reason, you do decide to venture outside of London, the beaches of the south coast of England can be reached by a quick train journey, while cities such as Cambridge, Oxford and Bath are also only a short distance away. London is also the gateway to Europe and you can even travel by train to Paris or Brussels in just two hours.

## Career opportunities

London is the heart of the UK's financial, commercial and creative sectors. It is therefore the ideal place for you to gain some professional experience while studying. Thousands of businesses in the London area welcome international students through work placements and internship programmes, and these opportunities will give you a practical advantage when pursuing your future career.

## Climate

London's seasons change gradually, with winter from December to February and summer from June to August. Although August is usually the hottest time of the year and temperatures can reach 30°C, the average high is about 24°C and the average low is around 14°C. The winters can occasionally be cold enough to snow, and London is one of the most beautiful cities in the world when covered with a blanket of fresh snow.

## Things to do

- Catch a glimpse of the Queen at Buckingham Palace.
- Watch a Premier League football match at nearby Stamford Bridge, home to Chelsea FC.
- Get a taste of home in Chinatown or in the Arabic restaurants of Edgware Road.
- Take a trip on the London Eye and see the city from the skies.
- Have your photo taken with Prince William at Madame Tussauds' amazing waxwork museum.
- Shop until you drop on Oxford Street, or maybe take a trip to Harrods for something special.
- Sail down the River Thames on a spectacular river cruise.





## LONDON FAST FACTS

|             |                 |
|-------------|-----------------|
| Population  | 8.1 million     |
| Currency    | UK Sterling (£) |
| Language    | English         |
| Time zone   | GMT/UTC         |
| Electricity | 230 V           |

Want to know more about London?

- [visitlondon.com](http://visitlondon.com)
- [timeout.com/london](http://timeout.com/london)
- [londontown.com](http://londontown.com)

# Brunel degrees available to LBIC students

## Undergraduate

### Business and Management

- BSc (Hons) Business and Management
- BSc (Hons) Business and Management (Accounting)
- BSc (Hons) Business and Management (Marketing)
- BSc (Hons) International Business

### Computer Science

- BSc (Hons) Business Computing
- BSc (Hons) Business Computing (eBusiness)
- BSc (Hons) Business Computing (Human Computer Interaction)
- BSc (Hons) Business Computing (Social Media)
- BSc (Hons) Computer Science
- BSc (Hons) Computer Science (Artificial Intelligence)
- BSc (Hons) Computer Science (Digital Media and Games)
- BSc (Hons) Computer Science (Network Computing)
- BSc (Hons) Computer Science (Software Engineering)

### Economics and Finance

- BSc (Hons) Economics
- BSc (Hons) Economics and Business Finance
- BSc (Hons) Finance and Accounting

## Engineering

- BEng (Hons) Civil Engineering
- BEng (Hons) Civil Engineering with Sustainability
- BEng (Hons) Electronic and Communications Engineering
- BEng (Hons) Electronic and Computer Engineering
- BEng (Hons) Electronic and Electrical Engineering
- BEng (Hons) Mechanical Engineering
- BEng (Hons) Mechanical Engineering with Aeronautics
- BEng (Hons) Mechanical Engineering with Automotive Design
- BEng (Hons) Mechanical Engineering with Building Services
- BEng (Hons) Mechanical and Energy Engineering

## Law

- LLB (Hons) Law
- LLB (Hons) Law with Criminal Justice
- LLB (Hons) Law with International Arbitration & Commercial Law

## Postgraduate

### Arts

- MA Contemporary Performance Making
- MA English Literature

### Computer Science

- MSc Business Systems Integration (with SAP Technology)
- MSc Data Science and Analytics
- MSc Digital Service Design
- MSc Information Systems Management

## Engineering

- MSc Advanced Engineering Design
- MSc Advanced Instrumentation and Smart Systems
- MSc Advanced Multimedia Design and 3D Technologies
- MSc Biomedical Engineering
- MSc Digital Design and Branding
- MSc Engineering Management

## Design

- MA Design and Branding Strategy
- MA Design Strategy and Innovation
- MSc Integrated Product Design

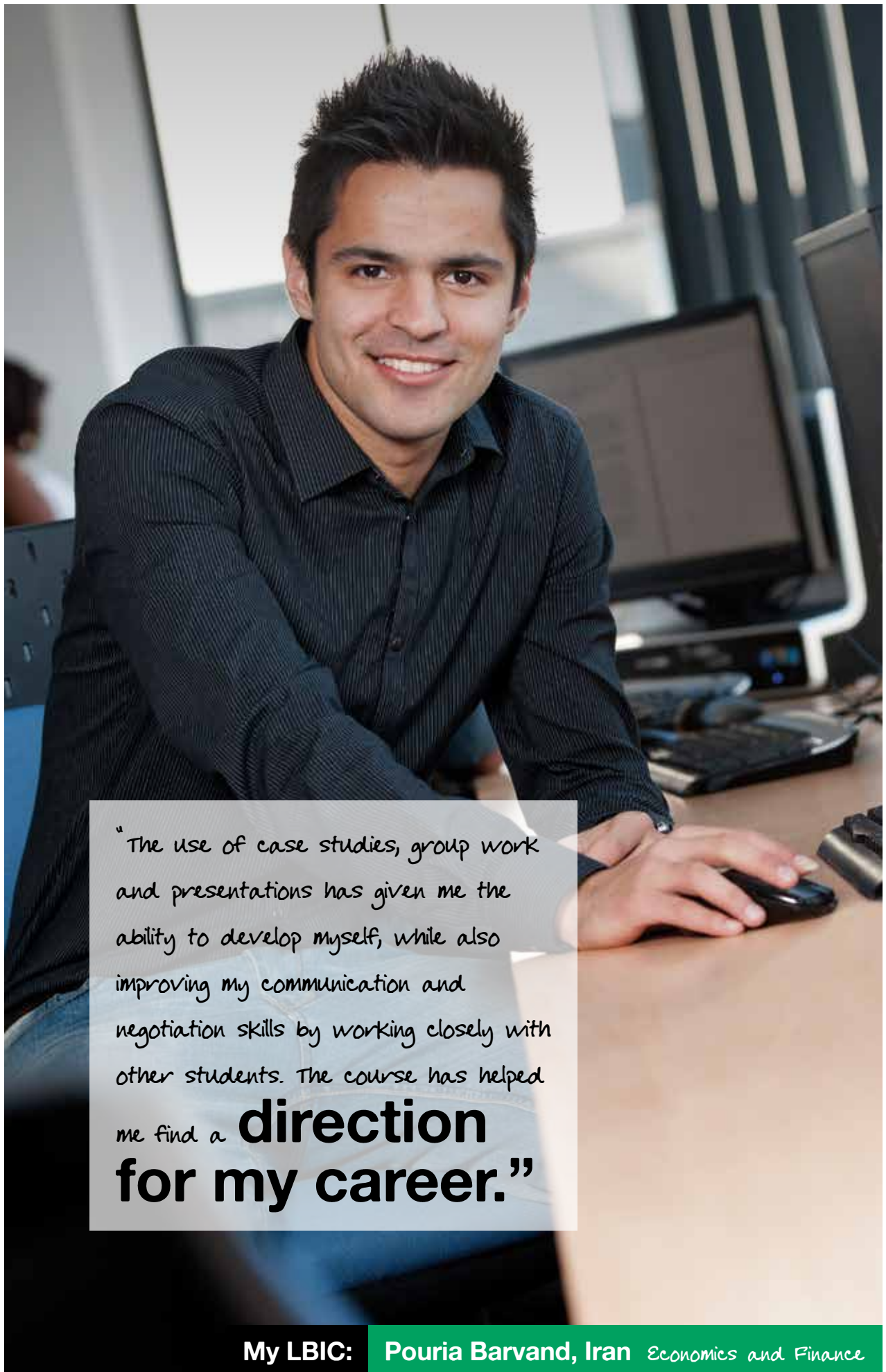
## Environmental Science and Sustainability

- MSc in Climate Change Impacts and Sustainability
- MSc in Environmental Science: Legislation and Management
- MSc in Environmental Science: Pollution and Monitoring
- MSc in Sustainability, Entrepreneurship and Design (with Professional Development)

## Law

- LLM International Financial Regulation and Corporate Law
- LLM International Human Rights Law
- LLM International Intellectual Property Law
- LLM International Commercial Law
- LLM Law





"The use of case studies, group work and presentations has given me the ability to develop myself, while also improving my communication and negotiation skills by working closely with other students. The course has helped

me find a **direction**  
**for my career."**

# Undergraduate course outlines

## Business and Management

In this pathway you will gain a broad business and management background and the analytical, technical and interpersonal skills needed to understand, analyse and address the issues facing today's companies. By choosing particular modules in the later stages of your degree you will also be granted exemptions from select professional examinations in the fields of accounting, marketing or business and management.

### Employment and career options

Potential careers in: advertising, auditing, brand management, marketing, sales, management consulting.

### Average starting salaries

According to The Complete University Guide 2013, average graduate starting salaries are: Business Studies: £21,329



### Stage 1: University Foundation

#### Location

LBIC at Brunel University London

#### Duration

Two semesters

#### Intakes

January, May, September

#### Course fee

£12,900

#### Modules

- Economics
- Interactive Learning Skills and Communication 1
- Management
- Marketing
- Mathematics
- Principles of Accounting
- Principles of ICT
- Statistics

#### Location

LBIC at Brunel University London

#### Duration

Two semesters

#### Intakes

January, May\*, September

#### Course fee

£14,050

#### Modules

- Interactive Learning Skills & Communication 4
- International Business Environment
- Introduction to Accounting
- Introduction to Management Enquiry
- Managing Information with Technology
- Organisational Behaviour and Analysis
- Principles & Practices of Marketing

### Next stages of study

Second Year University Studies (Stage 3) at Brunel Business School at Brunel University London

Final Year University Studies (Stage 4) at Brunel Business School at Brunel University London

### Stage 2: First Year University Studies

During your first year university studies you will gain a broad business and management background and start to gain knowledge of the analytical, technical and interpersonal skills needed to understand, analyse and address the issues facing today's companies. You will experience the curriculum of a Brunel degree, but taught in smaller class sizes and with extra academic contact hours, and will be fully prepared for onward study at the University's Brunel Business School.

#### This pathway leads to the following Brunel University London degrees:

- BSc (Hons) Business and Management
- BSc (Hons) Business and Management (Accounting)
- BSc (Hons) Business and Management (Marketing)
- BSc (Hons) International Business

\* Only BSc (Hons) Business and Management and BSc (Hons) Business and Management (Marketing) available in May intake.



## Computer Science

This pathway will help you gain the skills and knowledge on the core concepts needed to understand computing and their application in organisations. With the fast changing pace of technological advances, you will experience learning at an individual as well as group level, ranging from report writing to designing your own business web page.

### Employment and career options

Potential careers in: business analysis, games programming, internet security, network administration, network analysis, network management, software development, software engineering, systems administration.

### Average starting salaries

According to The Complete University Guide 2013, average graduate starting salaries are:

Computer Science: £22,311

### Stage 1: University Foundation

#### Location

LBIC at Brunel University London

#### Duration

Two semesters

#### Intakes

January, May, September

#### Course fee

£12,900

#### Modules

- Economics
- Interactive Learning Skills and Communication 1
- Management
- Marketing
- Mathematics
- Principles of Accounting
- Principles of ICT
- Statistics

### Stage 2: First Year University Studies

Your first year university studies will help you gain the skills and knowledge on the core concepts needed to understand computing and their application in organisations. With the fast changing pace of technological advances, you will experience learning at an individual as well as a group level, ranging from report writing to designing your own business web page.

You will experience the curriculum of a Brunel degree, but taught in smaller class sizes and with extra academic contact hours, and will be fully prepared for onward study at the Department of Computer Science at Brunel University London.

#### Location

LBIC at Brunel University London

#### Duration

Two semesters

#### Intakes

January and September

#### Course fee

£14,050

#### Modules

- Data and Information
- Group Project Lab
- Group Project Lecture
- Group Project Tutorial
- Information Systems and Organisations
- Interactive Learning Skills & Communication 4
- Introductory Programming
- Logic and Computation

### This pathway leads to the following Brunel University London degrees:

- BSc (Hons) Business Computing
- BSc (Hons) Business Computing (eBusiness)
- BSc (Hons) Business Computing (Human Computer Interaction)
- BSc (Hons) Business Computing (Social Media)
- BSc (Hons) Computer Science
- BSc (Hons) Computer Science (Artificial Intelligence)
- BSc (Hons) Computer Science (Digital Media and Games)
- BSc (Hons) Computer Science (Network Computing)
- BSc (Hons) Computer Science (Software Engineering)

### Next stages of study

Second Year University Studies (Stage 3) at the Department of Computer Science at Brunel University London.

Final Year University Studies (Stage 4) at the Department of Computer Science at Brunel University London.



# Undergraduate course outlines (continued)

## Economics and Finance

Economics and Finance courses combine economic theory with the practical skills necessary to apply your knowledge to a business, industrial, financial or government environment. Providing students with this combination of theory and practice, as well as a solid background in finance, is what distinguishes Brunel's courses from other Economics degrees. An optional work placement arranged through the University's strong industry links will further enhance your employment prospects.

### Employment and career options

Potential careers in: audit and assurance, commercial banking, corporate finance, credit control, economics research, financial analysis, financial planning, forensic accounting, insurance, investment banking, management accounting, money management, real estate, stockbroking, taxation.

### Average starting salaries

According to The Complete University Guide 2013, average graduate starting salaries are:

Economics: £25,722

Accounting and Finance: £21,327

### Stage 1: University Foundation

#### Location

LBIC at Brunel University London

#### Duration

Two semesters

#### Intakes

January, May, September

#### Course fee

£12,900

#### Modules

- Interactive Learning Skills and Communication 1
- Management
- Mathematics
- Principles of ICT
- Economics
- Marketing
- Principles of Accounting
- Statistics

#### Location

LBIC at Brunel University London

#### Duration

Two semesters

#### Intakes

January and September

#### Course fee

£13,800

#### Modules

- Mathematics for Economics & Finance A
- Statistical Research Methods A
- Macroeconomic Principles
- Financial Markets
- Interactive Learning Skills & Communication 4
- Mathematics for Economics & Finance B
- Statistical Research Methods B
- Microeconomic Principles
- Introduction to Financial Accounting

### Next stages of study

Second Year University Studies (Stage 3) at the Department of Economics and Finance at Brunel University London

Final Year University Studies (Stage 4) at the Department of Economics and Finance at Brunel University London

### This pathway leads to the following Brunel University London degrees:

- BSc (Hons) Economics
- BSc (Hons) Economics and Business Finance
- BSc (Hons) Finance and Accounting





## Engineering

Engineering at Brunel was ranked 10th in the UK in the 2013-14 Times Higher Education World University Rankings in Engineering and Technology. The College of Engineering, Design and Physical Sciences teaches undergraduate courses in four major subject areas including Design, Civil Engineering, Electronic and Computer Engineering and Mechanical Engineering. All programmes are designed to produce highly qualified graduates who will take up demanding roles within the engineering, design and technology industries by developing leadership, innovation and creative skills, in addition to the core technical and analytical skills, to enable and encourage graduates to follow successful careers and aspire to senior managerial roles.

### Employment and career options

Potential careers in: accountancy, the armed forces, automotive design and manufacture, aviation and avionics, banking, building services engineering, design management and consultancy, electronics, financial consultancy; gas and water supply, geotechnical exploration, innovative materials, insurance, manufacturing, mining and mineral processing, National Health Service, North Sea oil production, nuclear power, patent engineering, service and engineering industries and TV production. Students can opt to undertake a work – placement year to further enhance their employability prospects.

### Average starting salaries

According to The Complete University Guide 2014, average graduate starting salaries are:

Civil Engineering: £23,667  
 Electrical and Electronic Engineering: £23,132  
 General Engineering: £26,542  
 Materials Technology: £19,895  
 Mechanical Engineering: £24,337



### Stage 1: University Foundation

#### Location

LBIC at Brunel University London

#### Duration

Two semesters

#### Intakes

January and September

#### Course fee

£14,000

#### Modules

- Engineering Concepts
- ICT and Programming Techniques
- Interactive Learning Skills and Communication for Engineers
- Mathematics for Engineers 1
- Mathematics for Engineers 2
- Physics for Engineers 1
- Physics for Engineers 2
- Problem solving, Creative Thinking and Analytical Skills

### Next stages of study

First Year University Studies (Stage 2) at the College of Engineering, Design and Physical Sciences, Brunel University London

Second Year University Studies (Stage 3) at the College of Engineering, Design and Physical Sciences, Brunel University London

Final Year University Studies (Stage 4) at the College of Engineering, Design and Physical Sciences, Brunel University London

This pathway leads to the following Brunel University London degrees:

- BEng (Hons) Civil Engineering
- BEng (Hons) Civil Engineering with Sustainability
- BEng (Hons) Electronic and Communications Engineering
- BEng (Hons) Electronic and Computer Engineering
- BEng (Hons) Electronic and Electrical Engineering
- BEng (Hons) Mechanical Engineering
- BEng (Hons) Mechanical Engineering with Aeronautics
- BEng (Hons) Mechanical Engineering with Automotive Design
- BEng (Hons) Mechanical Engineering with Building Services
- BEng (Hons) Mechanical and Energy Engineering



## Undergraduate course outlines (continued)

### Law

Brunel's Bachelor of Law (Honours) is a qualifying law degree that allows you to progress directly to the vocational stage of training to become a solicitor or barrister. It is a flexible course that enables you to focus on areas that interest you and develop your own specialisation to meet the requirements of your chosen career. Potential specialisations include criminal law, family law, human rights law and international law.

**Employment and career options**

Potential careers as: Barrister, Court Clerk, Paralegal, Solicitor.

**Average starting salaries**

According to The Complete University Guide 2013, average graduate starting salaries are:  
Law: £20,719

**Stage 1: University Foundation**

**Location**

LBIC at Brunel University London

**Duration**

Two semesters

**Intakes**

January and September

**Course fee**

£13,300

**Modules**

- Criminal Liability and Process
- Critical Analysis and Writing Skills
- Legal Ethics and Skills
- Legal Foundations
- Interactive Learning Skills and Communication 1
- Introduction to the Law of Civil Obligations
- Management
- Principles of ICT

**Next stages of study**

First Year University Studies (Stage 2)

at Brunel Law School, Brunel University London

Second Year University Studies (Stage 3)

at Brunel Law School, Brunel University London


Final Year University Studies (Stage 4)

at Brunel Law School, Brunel University London

**This pathway leads to the following Brunel University London degrees:**

- LLB (Hons) Law
- LLB (Hons) Law with Professional Placement
- LLB (Hons) Law with Criminal Justice
- LLB (Hons) Law with Criminal Justice (Professional Placement)
- LLB (Hons) Law with International Arbitration and Commercial Law
- LLB (Hons) Law with International Arbitration and Commercial Law (Professional Placement)





*"I've enjoyed studying at LBIC and Brunel and the course has contained modules **directly related to my working background** and the career I will be pursuing after I graduate."*

**My LBIC:** Zhen Lin, China *MBA*

# Postgraduate course outlines

## Arts

### Employment and career options

Potential careers in: digital performance, live-art, print and electronic media, theatre, publishing, writing and direction.

### MA Contemporary Performance Making

This is a practice focused programme designed for highly motivated aspiring artists who want to develop their artistic presence in one or more of Brunel's specialist areas, 'writing/directing', 'live-art/installation' and 'digital performance'. The programme draws upon both facilities and expertise at Brunel and the vast resources of London, and offers a combination of critical engagement and practice based research.

### MA English Literature

This course aims to introduce students to the advanced study of a wide range of literatures in English, from the early modern to the contemporary period. Students will explore the diversity of literary and cultural production through innovative modules designed to cross disciplinary, historical and geographical boundaries, thereby offering a wide scope within which students can develop their own interests.

### Stage 1: Pre-Master's

#### Location

LBIC at Brunel University London

#### Duration

One semester plus work placement (January intake)  
One semester (May intake)

#### Intakes

January and May

### Course fee

£7,050 (one semester)  
£8,050 (one semester plus work placement)

### Modules

- Interactive Learning Skills and Communication 5
- Critical and Creative Thinking
- Applied Concepts
- Research Methods

### This pathway leads to the following Brunel University London Master's degrees:

- MA Contemporary Performance Making
- MA English Literature

### Stage 2: Master's Degree

#### Location

Department of Arts and Humanities,  
Brunel University London

#### Course fee

£14,250

## Business and Management

### Employment and career options

Potential careers in: accounting and finance, advertising, brand management, business analysis, business consulting, human resource management, international trade, logistics, marketing management, sales, project management.



### MSc Management

MSc Management is one of the popular postgraduate courses on offer at Brunel Business School, the 2013 Times Higher Education Business School of the Year. The aim of the programme is to offer students a critically aware understanding of management and organisations relevant to career paths through an advanced study of organisations, their management and the changing contexts in which they operate. The programme offers four specialist pathways, all of which provide the opportunity for a 14 week work placement. The four options for MSc Management students are as follows:

- MSc Management (General Management)
- MSc Management (Branding and Marketing)
- MSc Management (Technology and Innovation Management)
- MSc Management (Creative Industries)

### MSc Marketing

This course offers critical insights into the marketing management practices of national and international organisations and provides the opportunity to understand traditional and contemporary marketing philosophies and theories. It also enables students to develop critical and creative skills and the expertise to generate, implement and evaluate organisational activities that satisfy the requirements of their employer and the customers. This degree has been approved and accredited by the Chartered Institute of Marketing (CIM).

### MSc International Business

This programme is designed for students seeking to operate within an international management or international business setting, as well as myriad organisations and disciplines where an understanding of international business is an asset. The course aims to enable students to develop a sound understanding of international business contexts and the ability to make integrative links across various disciplines.

### MSc Applied Corporate Brand Management

This world famous programme offers an unrivalled opportunity to study and evaluate contemporary theory relating to corporate branding and students will enjoy input from a dedicated corporate advisory board made up of experts from the branding world, including senior brand executives of multinational firms, brand consultants and design gurus. Students will also gain a thorough understanding of the issues related to marketing at the corporate level and an appreciation of how to apply corporate branding and marketing theory and practice in the context of a contemporary organisation, by way of a paid work placement of 16 weeks.

### MSc Global Supply Chain Management

This is a fascinating and focused programme for those considering a career in supply chain or logistics. Students will study issues relating to the development of supplier relationships, operations improvement, procurement strategies, inventory control, logistics operations, sustainability, as well as contemporary issues affecting these areas.

### MSc Human Resource Management

This CIPD accredited course offers students the opportunity to explore in-depth the theoretical and analytical issues in the management of human resources and the roles these play in organisation success. Students will examine a full range of HRM approaches, techniques and methodologies and will graduate with a critical theoretical and applied knowledge and understanding of human resource management.

### Masters of Business Administration (MBA)

Brunel's AMBA-accredited MBA is ranked in the Global Top 20 MBA Rankings for 2014 by the CEO Magazine's International Graduate Forum. The course is guided by innovative research and students are able to benefit from the university's partnerships with some of the world's largest corporations. A rich calendar of internal and external events and training allows students to get the most out of their MBA by activities such as international business tours, visits to companies in the UK, networking events, high profile corporate guest speakers, showcase events to present student work to global companies, on-campus recruitment fairs, and a host of other career enhancing activities.



## Business and Management (continued)

### MSc Human Resource Management and Employment Relations

This CIPD accredited programme will give you a thorough grasp of current theory and practice relating to the management of human resources and employment relations. Whilst the UK is the primary focus for the study of employment relations issues, students will also consider the human resource management challenges of organisations operating across national boundaries.

### MSc Accounting and Business Management

This recently unveiled and popular programme helps graduates develop their appreciation of the role of accounting within the overall function of management. Students will acquire technical accounting skills and integrate conceptual considerations with practice.

### MSc Business Intelligence and Social Media

This exciting programme explores developments in cloud based and mobile commerce that are changing the way businesses will operate in the future. The course draws together technology and business perspectives to understand the implications for social media enabled business.

### Stage 1: Pre-Master's

#### Location

LBIC at Brunel University London

#### Duration

One semester plus work placement (January intake)  
One semester (May and September intake)

#### Intake

April, June and September

#### Course fee

£7,050 (one semester)  
£8,050 (one semester plus work placement)

#### Modules

- Critical and Creative Thinking
- Interactive Learning Skills and Communication 5
- Management Principles
- Research Methods

#### This pathway leads to the following Brunel University London Master's degrees:

- MBA Business Administration\*
- MSc Accounting and Business Management
- MSc Applied Corporate Brand Management†

- MSc Business Intelligence and Social Media
- MSc Global Supply Chain Management
- MSc Human Resource Management
- MSc Human Resources and Employment Relations
- MSc International Business
- MSc Management
- MSc Marketing

### Stage 2: Master's Degree

#### Location

Brunel Business School,  
Brunel University London.

#### Course fee

£14,250–£19,500

\* Additional entry requirement of three years' postgraduate work experience in a professional environment at a managerial or supervisory level.

† Additional entry requirement of at least two years' relevant postgraduate work experience.

## Computer Science

### Employment and career options

Potential careers in: database administration, IT management, project management, software engineering, systems analysis, systems development.

### MSc Business Systems Integration (with SAP Technology)

The aim of this cutting-edge programme is to develop practical skills and critical awareness in relation to the state-of-the-art in business and enterprise systems integration from a service-oriented perspective. Students will gain experience of SAP R/3, Netweaver platform and business intelligence approaches and, consequently, will get hands-on experience of technology and systems that will greatly enhance employability.

### MSc Information Systems Management

This programme has been designed specifically to develop critical understanding of the management of information systems in the context of the organisational issues and challenges that impact on their development and application. Upon completion of the course, students benefit from a full understanding of the changing nature of information systems.

### MSc Data Science and Analytics

The aim of this programme is to develop critical awareness of the state-of-the-art in data science and demonstrate the practical skills necessary to create value in its application to business, scientific and/or social domains. The programme is run in conjunction with SAS, a market leader in business analytics software and services, and the largest independent vendor in the business intelligence market.

### MSc Digital Service Design

This programme equips students with the skills needed to work in the digital service design industry, experiencing major growth world-wide. The programme has been designed in collaboration with Wilson Fletcher, a long-established, leading digital service design consultancy.

### Stage 1: Pre-Master's

#### Location

LBIC at Brunel University London

#### Duration

One semester plus work placement (January intake)  
One semester (May intake)

#### Intakes

January and May

#### Course fee

£7,050 (one semester)  
£8,050 (one semester plus work placement)

#### Modules

- Applied Concepts
- Critical and Creative Thinking
- Interactive Learning Skills and Communication 5
- Research Methods

#### This pathway leads to the following Brunel University London Master's degrees:

- MSc Business Systems Integration (with SAP Technology)
- MSc Data Science and Analytics
- MSc Digital Service Design
- MSc Information Systems Management

### Stage 2: Master's Degree

#### Location

Department of Computer Science,  
Brunel University London

#### Course fee

£16,000–£17,000

## Postgraduate course outlines (continued)

### Design

#### Employment and career options

Potential careers in: 3D graphic design, aerospace engineering, audio visual pre- and post- production design, engineering consultancy, games design and programming, healthcare science and research, manufacturing, research and development, service and government sectors.

#### MA Design and Branding Strategy

This programme prepares students from design and other creative disciplines to design innovative strategies and act as a catalyst for change. This can apply in the design, branding and related professions and businesses, education and other organisations.

#### MA Design Strategy and Innovation

This unique international, multi-disciplinary course develops design managers and leaders as catalysts for strategic innovation and change. Students benefit from a combination of taught modules and industrial experience through design audits and industry placements.

#### MSc Integrated Product Design

This MSc aims to meet industrial demand by integrating technology, management, aesthetics, environmental sustainability, ergonomics, marketing, business and design methods to produce highly qualified and sought after designers.

#### Stage 1: Pre-Master's

##### Location

LBIC at Brunel University London

##### Duration

One semester plus work placement (January intake)  
One semester (May and September intake)

##### Intakes

January, September

##### Course fee

£7,050 (one semester)  
£8,050 (one semester plus work placement)

#### Modules

- Interactive Learning Skills and Communication 5
- Critical and Creative Thinking
- Applied Concepts
- Research Methods

#### This pathway leads to the following Brunel University London Master's degrees:

- MA Design and Branding Strategy
- MA Design Strategy and Innovation
- MSc Integrated Product Design

#### Stage 2: Master's Degree

##### Location

College of Engineering, Design and Physical Sciences, Brunel University London

##### Course fee

£16,000



## Engineering

### Employment and career options

Potential careers in: 3D graphic design, aerospace engineering, audio visual pre- and post- production design, engineering consultancy, games design and programming, healthcare science and research, manufacturing, research and development, service and government sectors.

### MSc Advanced Engineering Design

This programme is aimed at high-calibre and ambitious mechanical engineering graduates who are seeking to gain expertise in systematically developing complex, multidisciplinary engineering design.

### MSc Advanced Instrumentation and Smart Systems

This programme aims to provide a learning opportunity for students to develop in-depth knowledge and advanced skills in the theory and practice of the advanced instrumentation and smart systems and to produce the leading engineers / scientists required for future smart industries and smart societies.

### MSc Advanced Multimedia Design and 3D Technologies

This programme aims to develop students with a thorough knowledge of the design principles and techniques required for the design of combined real and virtual interactive and 3D multimedia and an appreciation of the current research directions and opportunities that are available in this field of research.

### MSc Biomedical Engineering

This programme provides students with an in-depth introduction to the field of biomedical engineering. It provides a foundation for a future career in clinical engineering, the medical industry, healthcare science and research.

### MSc Digital Design and Branding

The main aim of this programme is to prepare students for creative roles in the digital branding industry - both at executive and strategic and managerial levels.

### MSc Engineering Management

This programme equips students with the ability to handle diverse management responsibilities that require knowledge in finance, systems thinking, operations, human resources and the design and management of the supply chain.

### Stage 1: Pre-Master's

#### Location

LBIC at Brunel University London

#### Duration

One semester plus work placement (January intake)  
One semester (May and September intake)

#### Intakes

January, September

### Course fee

£7,050 (one semester)

£8,050 (one semester plus work placement)

### Modules

- Interactive Learning Skills and Communication 5
- Critical and Creative Thinking
- Applied Concepts
- Research Methods

### This pathway leads to the following Brunel University London Master's degrees:

- MSc Advanced Engineering Design
- MSc Advanced Instrumentation and Smart Systems
- MSc Advanced Multimedia Design and 3D Technologies
- MSc Biomedical Engineering
- MSc Digital Design and Branding
- MSc Engineering Management

### Stage 2: Master's Degree

#### Location

College of Engineering, Design and Physical Sciences, Brunel University London

#### Course fee

£16,000



## Postgraduate course outlines (continued)

### Environmental Science and Sustainability

#### Employment and career options

Potential careers in: climate change impact and sustainability, entrepreneurship, legislation and management, environmental science.

#### MSc Climate Change Impacts and Sustainability

This is a multi-school interdisciplinary programme that explores the likely impacts of global climate change on society and the wider environment and to instil the skills to develop creative and evidenced solutions. The programme is accredited by the Institution of Environmental Sciences (IES) and the Chartered Institution of Water and Environmental Management (CIWEM).

#### MSc Environmental Science: Legislation and Management:

This MSc aims to develop students in the critical analysis of legislative and management aspects of the environment. Students leave the course with an ability to approach environmental management and legislation with an investigative attitude, to be innovative to assess a wide range of problems in the modern environment, and to explore solutions.

#### MSc Environmental Science: Pollution and Monitoring

The programme aims to equip students with an understanding of the fundamental scientific aspects of environmental pollution with an emphasis on sources, pathways and receptors and technical approaches to controlling exposure. Students will gain an understanding of the environmental and technological issues in the management and control of air, soil and water pollution.

#### MSc Sustainability, Entrepreneurship and Design (with Professional Development)

This programme equips students with two essential ingredients: firstly, the mind-set and ability to play a key role in building a sustainable world – one that is not only prosperous, but also environmentally stable and socially inclusive and secondly, hands-on experience, such that they can become entrepreneurial business leaders and inventors.

#### Stage 1: Pre-Master's

##### Location

LBIC at Brunel University London

##### Duration

One semester plus work placement (January intake)  
One semester (May and September intake)

#### Intakes

January, May and September

#### Course fee

£7,050 (one semester)  
£8,050 (one semester plus work placement)

#### Modules

- Applied Concepts
- Critical and Creative Thinking
- Interactive Learning Skills and Communication 5
- Research Methods

#### This pathway leads to the following Brunel University London Master's degrees:

- MSc in Climate Change Impacts and Sustainability
- MSc in Environmental Science: Legislation and Management
- MSc in Environmental Science: Pollution and Monitoring
- MSc in Sustainability, Entrepreneurship and Design (with Professional Development)

#### Stage 2: Master's Degree

##### Location

College of Health and Life Sciences, Brunel University London

##### Course fee

£13,500–£16,000

### Law

#### Employment and career options

Potential careers in: human rights law, international commercial law, international financial regulation and corporate law, international intellectual property.

#### LLM Law

The aim of this programme is to equip students with a comprehensive grounding in the legal concepts and principles operating in the areas of law chosen. Students are given the opportunity to gain an understanding of areas of social and criminal justice policy where relevant and are introduced to areas of controversy in their selected areas of law and socio-legal studies.

#### LLM International Human Rights Law

This programme is designed to enable students to become human rights practitioners and specialists in this area of law. Students will be expected to critically engage with many of the human rights issues that feature strongly in the public debate today, and gain a deep understanding of international human rights law, as well as its interconnection with international criminal and comparative criminal law.

#### LLM International Commercial Law

This research-led programme is designed for law graduates who wish to develop specialist knowledge of aspects of the increasingly important field of international commercial law.

Students gain a solid grounding in this growing discipline with an aim to become practitioners or to continue with further studies and research.

#### LLM International Financial Regulation and Corporate Law

This programme is designed for graduates seeking to gain a solid foundation in financial regulations and corporate law in the international context. The programme focuses on the conceptual and theoretical aspects of substantive law and regulation in the field. The course also offers the practical aspects of financial regulation in the domestic and international context.

#### LLM International Intellectual Property Law

This programme provides students with extensive knowledge on the fundamentals of intellectual property as well as the opportunity to develop specialised skills through a wide range of elective modules on different aspects of this complex area, including the wide spread use of the Internet and other cross border communications and commercial technologies.

#### Stage 1: Pre-Master's

##### Location

LBIC at Brunel University London

##### Duration

One semester plus work placement (January intake)  
One semester (May and September intake)

#### Intakes

January, May and September

#### Course fee

£7,050 (one semester)  
£8,050 (one semester plus work placement)

#### Modules

- Applied Concepts
- Critical and Creative Thinking
- Interactive Learning Skills and Communication 5
- Research Methods

#### This pathway leads to the following Brunel University London Master's degrees:

- LLM International Commercial Law
- LLM International Financial Regulation and Corporate Law
- LLM International Human Rights Law
- LLM International Intellectual Property Law
- LLM Law

#### Stage 2: Master's Degree

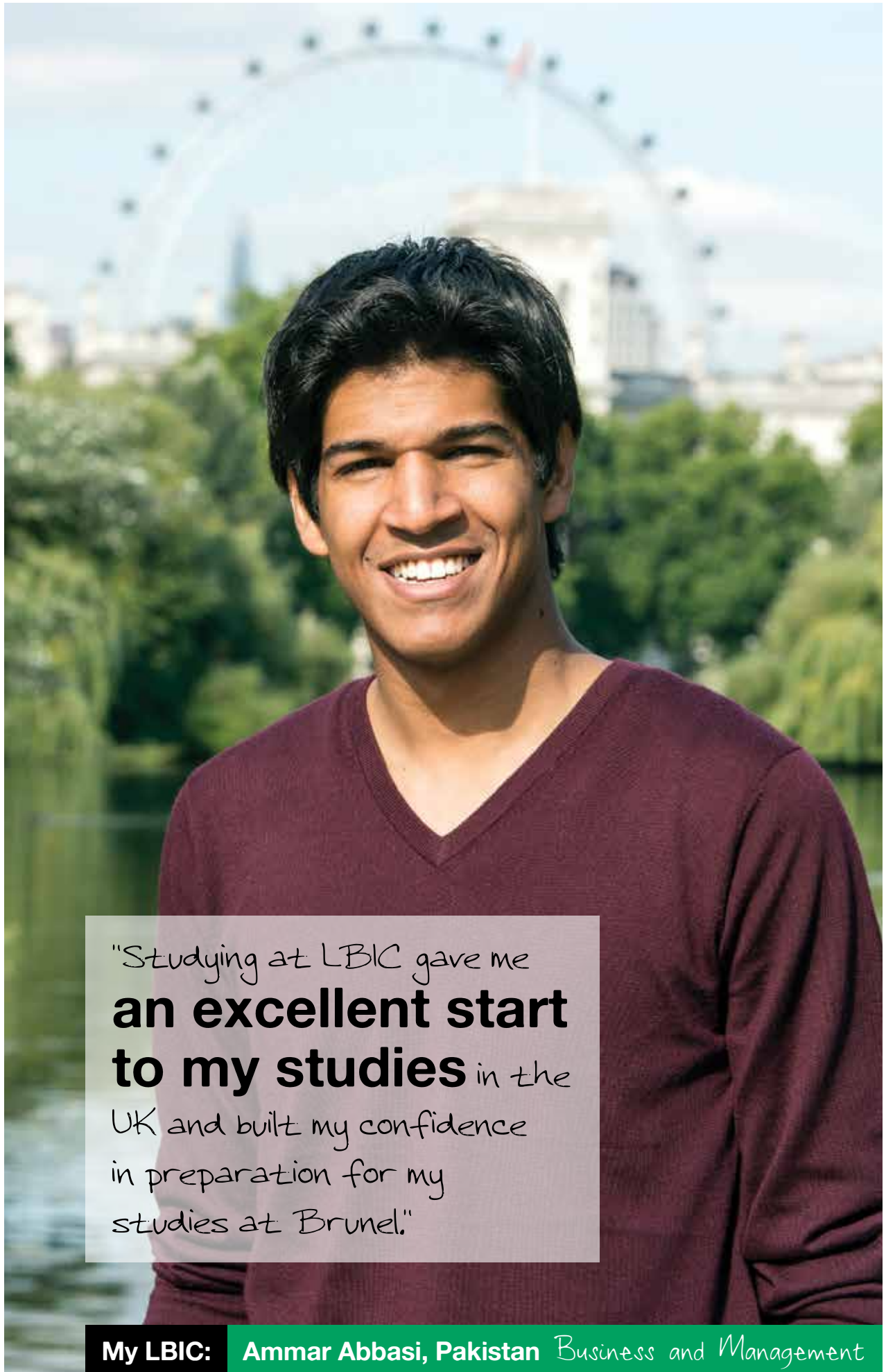
##### Location

Brunel Law School, Brunel University London

##### Course fee

£14,250





"Studying at LBIC gave me  
**an excellent start  
to my studies** in the  
UK and built my confidence  
in preparation for my  
studies at Brunel."

**My LBIC:** Ammar Abbasi, Pakistan *Business and Management*

# Academic entry requirements

If your country or qualification is not listed below, please visit [brunel.ac.uk/lbic](http://brunel.ac.uk/lbic) or contact the LBIC Admission Office: [admission@lbic.brunel.ac.uk](mailto:admission@lbic.brunel.ac.uk)

## Undergraduate entry requirements

| Country/Region  | Stage 1:<br>University Foundation   | Stage 1:<br>University Foundation (Engineering)   | Stage 2:<br>First Year University<br>Studies  |
|---|---|---|---|
| UK Education System   | 5 GCSE Passes (including Mathematics)   | 5 GCSE Passes Grade A-C (including Mathematics and Physics)   | Satisfactory completion of GCE A / AS Levels  |
| International Baccalaureate   | Completion of IB Certificate  | Completion of IB Certificate with SL5 in Mathematics and Physics  | Completion of IB Diploma or completion of IB Certificate with 24 points   |
| China   | 3 year Senior Middle School with a minimum score of 60%; or 2 year Senior Middle School with a minimum score of 80%   | 3 year Senior Middle School with a minimum score of 75% (including mathematics and Physics at 70%); or 2 year Senior Middle School with a minimum score of 85% (including mathematics and Physics at 80%)   | 3 year Senior Middle School with a minimum score of 75%   |
| Egypt   | Certificate of Secondary Education with 60% average   | Certificate of Secondary Education with 65% average, including 65% in mathematics and Physics   | Advanced Certificate of Secondary or Technical Education with 60% average   |
| Gulf Cooperation Council States (Kuwait, Oman, Bahrain, Qatar, Saudi Arabia, UAE) | Completion of Tawjahiya / Thanawiya: minimum 60% average  | Completion of Tawjahiya/Thanawiya: minimum 75% average, including 75% in mathematics and Physics  | n/a   |
| Hong Kong   | Form 4 and 5 with an average of 50-60%  | Form 4 and 5 with an average of 65% including 65% in mathematics and Physics, or 2 x HKDSE passes at Level 2 and 2 x HKDSE passes at Level 3 in mathematics and Physics.  | HKDSE minimum of 3 passes at Level 3 or completion of first year of an Associate Diploma with GPA 2.4/4   |
| India   | Completion of 10th intermediate with a minimum grade of 40% from CBSE, ICSE, Maharashtra, Tamil Nadu, Gujarat, Karnataka or West Bengal; or 50% for other regions | Completion of 10th intermediate with a minimum grade of 50% from CBSE, ICSE, Maharashtra, Tamil Nadu, Gujarat, Karnataka or West Bengal (including mathematics and Physics at 50%); or 60% for other regions (including mathematics and Physics at 60%) | Completion of 10+2/intermediate with a minimum grade of 50% from CBSE, ICSE, Maharashtra, Tamil Nadu, Gujarat, Karnataka or West Bengal; or 60% for other regions |
| Kenya   | Successful Completion of KCSE with a D average or 5 passes at GCE O Level   | Successful Completion of KCSE with a C average including C in mathematics and Physics   | Successful completion of KCSE with grades of C or above; or 2 GCE A-Level or 1 A Level pass and 2 AS Levels   |
| Malaysia  | Successful Completion of SPM/UEC with Grade D or equivalent   | Successful Completion of SPM/UEC with Grade C or equivalent, including mathematics and Physics  | STPM/UEC: 2 passes with a minimum Grade D   |
| Nigeria   | SSCE (WAEC/NECO): 5 passes with grades of D7 and above  | SSCE (WAEC/NECO): 5 passes with grades of C6 and above, including mathematics and Physics at B3   | SSCE (WAEC/NECO): 5 passes with grades of C6 and above  |
| Pakistan  | Completion of SSC (10) with an average of 50%   | Completion of SSC (10) with an average of 60%, including mathematics and Physics at 65%   | Successful completion of HSC (10+2) with an average of 55%; or 2 year Bachelor's Degree with a grade of 55%   |
| Russia  | Completion of Atestat with a grade of 3 (satisfactory)  | Completion of Atestat with a grade of 3 (satisfactory) including mathematics and Physics at grade 4   | Certificate of Secondary Education with a grade of 4 (good); or Diploma of Secondary Vocational Education (advanced level) with a grade of 3 (satisfactory)       |
| Saudi Arabia  | Successful completion of Tawjihyah with a minimum average of 60%  | Completion of Tawjahiya: minimum 75% average, including 75% in mathematics and Physics  | n/a   |

| Country/Region | Stage 1:<br>University Foundation   | Stage 1:<br>University Foundation (Engineering)  | Stage 2:<br>First Year University<br>Studies   |
|----------------|---|--|--|
| Sri Lanka      | Completion of Year 11 with GCE O Levels or equivalent: Minimum 5 GCE O Levels from grades A-C (including English and Mathematics)   | Minimum 5 GCE O Levels from grades A-C (including English, Mathematics and Physics)  | A Level / AS Level: Minimum 2S grades and above  |
| Tanzania       | Cambridge Overseas Higher School Certificate (COHSC)/ East African Advanced Certificate of Education (EAACE): grade D or above/ 5 Passes with National Examinations Council | Cambridge Overseas Higher School Certificate (COHSC)/East African Advanced Certificate of Education (EAACE): Grade C or above/ 5 Passes with National Examinations Council including mathematics and Physics | National Form Vi Examination/ Advanced Certificate of Secondary Education (ACSE): Grade S or above |
| Thailand       | Successful Completion of Matayaoom 6 with a minimum average GPA of 2.0  | Successful Completion of Matayaoom 6 with a minimum average GPA of 3.0, with mathematics and Physics 3.0   | Successful Completion of Matayaoom 6 with a minimum GPA of 3.0                                     |
| Turkey         | Devlet Meslek Lise Diplomasi: Completion of High School Certificate   | Devlet Meslek Lise Diplomasi: Completion of High School Certificate with 60% in mathematics and Physics  | Devlet Meslek Lise Diplomasi/Lise Diplomasi/On-Lisans Diplomasi: Grade 3 (60%)                     |
| Uganda         | Uganda Certificate of Education (UCE): when 5 grades 1-6 are obtained   | Uganda Certificate of Education (UCE): when 5 grades 1-6 are obtained, including Grade 3 in mathematics and Physics  | Uganda Advanced Certificate of Education (UACE): when 5 grades 1-6 are obtained                    |
| USA            | High School Diploma: GPA 2.0  | High School Diploma: GPA 2.5, including 2.5 in mathematics and Physics   | High School Diploma: GPA 2.5   |
| Zimbabwe       | 5 passes A-C in Zimsec O Level; Cambridge Overseas School Certificate (COSC); or GCE O Levels   | 5 passes A-C in Zimsec O Level including mathematics and Physics   | Satisfactory completion of Zimsec A Level  |

### Postgraduate entry requirements

| Country/Region      | Stage 1: Pre-Master's<br>(Business and Management)  | Stage 1: Pre-Master's (Arts,<br>Computer Science, Design,<br>Environmental Science and<br>Sustainability and Law) | Stage 1: Pre-Master's<br>(Engineering)  |
|---------------------|---|---|---|
| UK Education System | Successful completion of a Bachelor's Degree with Second Class Second Division (2:2) (Honours). Graduates with Third Class (Honours) will be considered on an individual basis or (Scotland only) Successful completion of an ordinary Bachelor's Degree with Second Class Second Division (2:2). Graduates with Third Class will be considered on an individual basis. | Successful completion of a Bachelor's Degree with Third Class (Honours) from a relevant discipline.               | Successful completion of a Bachelor's Degree from a relevant Engineering discipline with a minimum Second Class Second Division (2:2). Other qualifications will be considered on an individual basis in partnership with the College of Engineering, Design and Physical Sciences. |
| Other               | For other countries or qualifications please visit <a href="http://brunel.ac.uk/lbic">brunel.ac.uk/lbic</a> or contact <a href="mailto:admission@lbic.brunel.ac.uk">admission@lbic.brunel.ac.uk</a>   |   |   |

# English language preparation

To gain entry into an undergraduate or postgraduate pathway, you must be able to demonstrate you have a suitable level of English proficiency. You can do this by obtaining one of the results shown in the table below and listed on our website. Visit [brunel.ac.uk/lbic](http://brunel.ac.uk/lbic) for details.

## Pre-sessional English courses

If you do not meet the English requirements for your chosen course, it may be possible to study pre-sessional English at Brunel. Upon successful completion of your pre-sessional English course you will then join your chosen academic programme at LBIC.

Brunel's pre-sessional English courses vary in length from six weeks to 48 weeks, depending on your individual requirements. The minimum requirement for entry is IELTS 4.0.

For more information about studying a pre-sessional English course at Brunel visit [brunel.ac.uk](http://brunel.ac.uk).



## Undergraduate pathway

## Postgraduate pathway

| Stage 1 (University Foundation) | Stage 2 (First Year University Studies) | Stage 1 (Pre-Master's) |
|---------------------------------|---|------------------------|
| IELTS 5.5*                      | IELTS 6.0*                              | IELTS 6.0*             |
| Pearson 51†                     | Pearson 51†                             | Pearson 51†            |
| GCSE/IGCSE C                    | GCSE/IGCSE C                            | GCSE/IGCSE C           |
| WAEC/NECO C6                    | WAEC/NECO C5                            | WAEC/NECO C5           |
| CBSE 70%                        | CBSE 70%                                | CBSE 70%               |

\* All elements must be minimum 5.5

† All elements must be minimum 51



# Navitas bursaries and scholarships

## Navitas family bursaries

Navitas offers financial support in the form of family bursaries. A bursary applies where two or more students from the same family study with a Navitas member institution.\*

The bursary is equivalent to 10 percent of the tuition fee of your programme of study.†

## Navitas academic merit scholarships

Navitas is committed to helping you achieve your career goals by offering awards to outstanding students.

Each term, Navitas colleges\* award two students with academic merit awards.

For more information, talk to an Advisor at your college about how to apply for a merit scholarship or visit individual college websites and search for 'scholarships and bursaries'.

\* The Navitas family bursary and academic merit scholarships are offered to students studying at ACBT, AUSI, BCUIIC, Curtin College, Curtin University Sydney, Curtin Singapore, CRIC, EIBT, EIC, Eynesbury, FIC, HIC, ICM, ICP, ICRGU, ICWS, La Trobe Melbourne, La Trobe University Sydney Campus, LBIC, Macquarie City Campus, MIBT, MIBT Indonesia, Navitas at UMass Boston, Navitas at UMass Dartmouth, Navitas at UMass Lowell, Navitas at WKU, Navitas at UNH, NIC, PIBT, PUIC, QIBT, SAIBT, SIBT and UCIC only.

Certificate programmes may also be known or registered as Foundation Studies or University Transfer Programme Stage I. Diploma programmes may also be known or registered as Undergraduate Pathway, University Transfer Programme (UTP), University Transfer Programme Stage II, University Pathways Programme.

The Navitas bursary is not applicable to any English language programme or any component of an English language programme offered by a Navitas member institution.

Navitas academic merit awards are offered to students studying in the UK at BCUIIC, CRIC, EIC, HIC, ICP, ICRGU, ICWS, LBIC and PUIC only. This information is correct as at the time of printing and may be subject to change without notice or at the discretion of Navitas member institutions or Navitas Limited.



# Academic calendar

LBIC offers several intakes throughout the year, depending on your chosen pathway. The dates in the table below apply to both undergraduate and postgraduate pathways.

|   | September 2014 | January 2015 | May 2015  | September 2015 |
|---|----------------|--------------|-----------|----------------|
| Enrolment and registration (compulsory) | 15 September   | 19 January   | 25 May    | 14 September   |
| Teaching begins                         | 22 September   | 26 January   | 1 June    | 21 September   |
| Semester ends                           | 20 December    | 2 May        | 29 August | 12 December    |



# Further information online

## Accommodation: [lbic.navitas.com/students/accommodation](http://lbic.navitas.com/students/accommodation)

LBIC are able to provide a range of accommodation options, catering to all tastes and budgets. Brunel University London is a campus university and accommodation can be arranged on-campus. Some students prefer to live away from the university campus and this can also be assisted with by LBIC's expert student services team. Please note:

- Rooms are available in both standard and en-suite format, depending on availability
- All on-campus accommodation provides single rooms, meaning you will never have to share a room
- On-campus accommodation can be booked online using the link above



## Arrival: [lbic.navitas.com/students/arrival](http://lbic.navitas.com/students/arrival)

LBIC is located just four miles from London Heathrow airport, which is the UK's main airport and provides transport links to every major city in the world. LBIC are able to arrange an airport taxi pick-up service for arriving students, ensuring that you are collected safely and taken to your chosen accommodation. Please note:

- Airport pick-up costs around £25 and will be charged to your student account
- 24 hours' notice must usually be provided to book an airport pick-up
- Bookings can be made online at the above link



## Conditions of enrolment: [lbic.navitas.com/apply-now/conditions-of-enrolment](http://lbic.navitas.com/apply-now/conditions-of-enrolment)

LBIC has a number of policies and procedures in place to comply with quality, regulatory and legislative requirements. These processes form a framework to ensure that LBIC delivers a high quality service to its students. In addition, the conditions of enrolment provide you with full information regarding refund policies and the terms and conditions of the contract entered into when accepting an LBIC offer.



## How to apply: [lbic.navitas.com/apply-now](http://lbic.navitas.com/apply-now)

You may apply to LBIC directly or through an LBIC representative in your home country. For a list of authorised LBIC representatives, visit [libt.navitas.com/libt-representatives](http://libt.navitas.com/libt-representatives). Early application and payment will secure your place in your chosen course and allow you enough time to apply for and receive a student visa.



## Join the LBIC Facebook page: [facebook.com/LBICstudents](https://facebook.com/LBICstudents)

The LBIC Facebook page is the perfect place to find out about everything that's happening at LBIC. You can meet some of our current students, check out the latest activities and discover more about living and studying in London. If you're thinking about being a part of LBIC and Brunel University London, the Facebook page is a must for you!



# Your investment

## Undergraduate pathway

| Stage of study   | LBIC course fee per stage | Brunel course fee per stage* |
|--|---------------------------|------------------------------|
| Stage 1: University Foundation (all subjects except Law)         | £12,900                   | -                            |
| Stage 1: University Foundation (Engineering only)                | £14,000                   | £16,000                      |
| Stage 1: University Foundation (Law only)                        | £13,300                   | -                            |
| Stage 2: First Year University Studies (Business and Management) | £14,050                   | £14,250                      |
| Stage 2: First Year University Studies (Economics and Finance)   | £13,800                   | £13,000                      |
| Stage 2: First Year University Studies (Computer Science)        | £14,050                   | £14,250                      |
| Stages 2, 3 and 4: Law   | -                         | £13,000                      |

## Postgraduate pathway

|  |               |                 |
|--|---------------|-----------------|
| Stage 1: Pre-Master's  | £7,050-£8,050 | -               |
| Stage 2: Master's (Arts, Business and Management)            | -             | £14,250         |
| Stage 2: Master's (Engineering and Design)                   | -             | £16,000         |
| Stage 2: Master's (Computer Science)                         | -             | £16,000-£17,000 |
| Stage 2: Master's (Environmental Science and Sustainability) | -             | £13,500-£16,000 |
| Stage 2: Master's (Law)                                      | -             | £14,250         |
| Stage 2: MBA   | -             | £19,500         |

All LBIC course fees may be subject to review. Current fees are listed at [lbic.navitas.com](http://lbic.navitas.com).

\* Brunel University London fees are a guide only and are subject to change. For the most up-to-date fee listings, visit [brunel.ac.uk/international](http://brunel.ac.uk/international).

# Navitas Advantage

At Navitas we offer you an outstanding student services and academic learning environment, which will enhance your overall experience whilst studying with us in the UK. We like to call this the Navitas Advantage.

As a student at LBIC you can expect the following services over and above the traditional higher education experience:

- Individualised student support tailored to your personal needs.
- One-to-one or small group academic tutorials.
- A selection of extra-curricular student activities each semester.
- Access to our online Student Portal to assist your learning.
- Visa assistance and advice in your home country from an authorised Navitas representative (where available).
- Weekly academic and welfare monitoring support.

- Individual feedback on academic progress.
- Access to the college's 24/7 emergency support line.
- Access to University facilities including the Student Union and Library.
- Navinsure, for complete peace of mind (further details following).

### Introducing Navinsure — your comprehensive insurance policy whilst in the college

Your welfare and safety are very important to us; this is why all Navitas students have comprehensive insurance, for the entire length of your study time with the college, as part of your Navitas Advantage experience. This insurance scheme has been specially tailored by Navitas to provide valuable cover for:

- personal belongings
- your laptops and gadgets
- emergency medical expenses
- Navitas Advantage fees.

For more details visit [lbic.navitas.com/navitas-advantage](http://lbic.navitas.com/navitas-advantage).

### Programme fees include:

- tuition
- orientation programme
- access to library and computing facilities
- student counselling and academic assistance as required.

### Programme fees do not include:

- accommodation
- meals and transport
- textbooks, stationery and printing
- health cover
- visa application fees
- air fares.

### Cost of living

Living in the UK can be less expensive than some other western countries, although your budget will depend on the type of lifestyle and accommodation you choose. The UKVI (UK Visas and Immigration) estimate that an international student will require living expenses of £820 per month, excluding tuition fees.





# Application form

Please print in BLOCK LETTERS

## (1) Personal

|  |   |
|--|---|
| Title: <input type="checkbox"/> Mr <input type="checkbox"/> Mrs <input type="checkbox"/> Miss <input type="checkbox"/> Other |   |
| Family name:   | First name(s):  |
| Previous family name: (if applicable)  |   |
| Date of birth: DAY / MONTH / YEAR  | Gender: <input type="checkbox"/> Male <input type="checkbox"/> Female |
| Student address:   |   |
|  |   |
| Postcode:  | Country:  |
| Home telephone:  | Mobile telephone:   |
| Country of birth:  | Skype ID:   |
| Student email:   |   |
| Country of passport held:  | Passport number:  |

## (2) Pathway area selection

| Undergraduate Pathway Areas  | Postgraduate Pathway Areas   |
|--|--|
| <input type="checkbox"/> Stage 1: University Foundation<br><input type="checkbox"/> Business and Management<br><input type="checkbox"/> Computer Science<br><input type="checkbox"/> Economics and Finance<br><input type="checkbox"/> Engineering<br><input type="checkbox"/> Law | <input type="checkbox"/> Stage 1: Pre-Master's<br><input type="checkbox"/> Arts<br><input type="checkbox"/> Business and Management<br><input type="checkbox"/> Computer Science<br><input type="checkbox"/> Design<br><input type="checkbox"/> Engineering<br><input type="checkbox"/> Environmental Science and Sustainability<br><input type="checkbox"/> Law |
| Year of entry:   | Month of entry: <input type="checkbox"/> September <input type="checkbox"/> January <input type="checkbox"/> May   |

Would you like to include a work placement with your degree (if available)?  Yes  No

(This section must be completed, including desired major/specialisation, where relevant)

|                     |
|---------------------|
| Your chosen degree: |
|---------------------|

## (3) Education details

### Prior education – highest level achieved

| Name of qualification (eg A Levels, Year 12, Bachelor's) | Name of institution attended | Grades (itemise individual subject grades) | Date of completion |
|--|------------------------------|--|--------------------|
|  |                              |  |                    |

#### (4) English proficiency

Please provide details of your English language qualification.

|                                |
|--------------------------------|
| IELTS (Score):                 |
| PTE Academic (Score):          |
| Other (*O* Levels, Cambridge): |

**You must submit full academic transcripts and certificates and proof of English proficiency so that we can assess your eligibility for your selected study Pathway. If these documents are not submitted with this form, we will not be able to process your application.**

#### (5) Disabilities/Special Needs

Please indicate below whether or not you will need any additional support or facilities. We will pass this information on to our Student Services team who will liaise with you to support you through the admission process and determine whether we and the university can meet your study needs.

|   |
|---|
| <input type="checkbox"/> I have no known learning/physical disability                       |
| <input type="checkbox"/> I have a specific learning/physical disability                     |
| Please give further details below and if necessary attach further information to this form. |
|   |
|   |

#### (6) Have you studied previously in the UK?

|  |                        |
|--|------------------------|
| <input type="checkbox"/> Yes <input type="checkbox"/> No |                        |
| From: DAY / MONTH / YEAR                                 | To: DAY / MONTH / YEAR |
| Name of school/university:                               |                        |

#### (7) Other information

How did you hear about LBIC? You may tick more than one box.

|   |
|---|
| <input type="checkbox"/> Exhibition/seminar   |
| <input type="checkbox"/> Internet   |
| <input type="checkbox"/> Newspaper/magazine advertisement   |
| <input type="checkbox"/> British Council  |
| <input type="checkbox"/> Recommended by an LBIC representative (agent)                            |
| <input type="checkbox"/> Recommended by a friend or relative                                      |
| Is your friend/relative an LBIC student? <input type="checkbox"/> Yes <input type="checkbox"/> No |
| <input type="checkbox"/> Other:   |

#### (8) Criminal Convictions

|   |
|---|
| Do you have any relevant criminal convictions or cautions? <input type="checkbox"/> Yes <input type="checkbox"/> No   |
| For guidance and to view the Admission Policy of Brunel University London please visit <a href="http://www.brunel.ac.uk/courses/admissions/admissions-policy">www.brunel.ac.uk/courses/admissions/admissions-policy</a> |

#### (9) Application checklist and declaration

We require the following section to be completed in order to process your application.

|   |  |
|---|--|
| Check that you have:  | Check that you have attached:  |
| <input type="checkbox"/> Completed all sections of the application form   | <input type="checkbox"/> Certified copies of your academic transcripts           |
| <input type="checkbox"/> Read and understood the Conditions of Enrolment, including the Fee and Refund Policy within the brochure or on the website | <input type="checkbox"/> Evidence of your English language ability if applicable |
|   | <input type="checkbox"/> A copy of your passport and/or visa                     |

I declare that the information I have supplied on this form is, to the best of my understanding and belief, complete and correct. I understand that the giving of false or incomplete information may lead to the refusal of my application or cancellation of enrolment. I give permission for LBIC to obtain official records from any educational institution that I have attended. I also authorise LBIC to supply any relevant official records to educational institutions to which I am seeking admission, to government bodies and to parents/sponsors if required. I understand that Course Fees are subject to review; I accept the conditions as laid out in the LBIC Payment and Refund Policy and accept liability for the payment of all Course Fees as outlined within. I understand that living expenses in the United Kingdom may be higher than in my own country and confirm that I am able to meet those costs. I hereby consent to LBIC disclosing my personal information to third parties in the manner set out in LBIC's Privacy Policy, which includes:

- Disclosure to LBIC representatives (agents) acting on my behalf;
- Disclosure to Brunel University London to facilitate progression from LBIC to the next stage of my studies;
- Disclosure to Navitas Ltd and its affiliates for the purpose of communication with regarding pathways and services offered by Navitas Ltd and its related companies.

Tick this box if you do not wish to receive information via SMS about your offer.

|   |                          |
|---|--------------------------|
| Signature:  | Date: DAY / MONTH / YEAR |
| Parent/Guardian signature:<br>(if applicant is under 18 years of age) | Date: DAY / MONTH / YEAR |

#### Office use only

|                                  |
|----------------------------------|
| Offer Details – Admission Office |
|----------------------------------|

#### Agent contact details

|                    |
|--------------------|
| Agency name:       |
| Agent Office Code: |
| Email:             |
| Branch Office:     |

#### Send your application to LBIC

LBIC  
Brunel University London  
Kingston Lane  
Uxbridge UB8 3PH  
United Kingdom  
E [admission@lbic.brunel.ac.uk](mailto:admission@lbic.brunel.ac.uk)

## Creating opportunities for success

Navitas provides you with the education you need, to get where you want to be in life. From English language skills and courses to help you enter university, to training for the workplace, Navitas colleges and campuses in 28 countries will support you every step of the way.

With over 120 Navitas and SAE Institution locations across the globe, and over 80,000 students currently studying with us, we understand the world's learning needs.

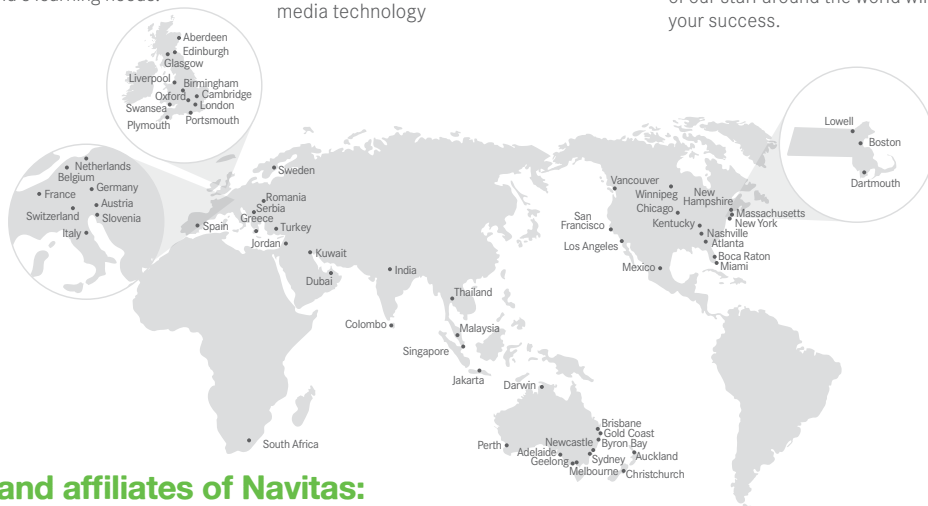
We've become one of the most trusted providers of education and training in the world.

Navitas offers to students, professionals and migrants from around the world, the following opportunities:

- English language training
- High school studies
- University preparation and programs
- Post-secondary education for creative media technology

- Career advancement programs
- Student recruitment
- Internship programs
- Migrant settlement services

We also offer customised workplace training for companies, and a range of training and settlement services for the Australian government. Wherever you are, and wherever you want to be, the knowledge and resources of our staff around the world will ensure your success.



## Members and affiliates of Navitas:

### Australia

- ACAP (Australian College of Applied Psychology)
- ATTC (Australian TESOL Training Centre)
- CELUSA (Centre for English Language in the University of South Australia)
- Curtin College – Curtin University, Perth
- Curtin University Sydney
- Eynesbury – The University of Adelaide and University of South Australia
- Hawthorn-Melbourne
- La Trobe Melbourne – La Trobe University
- La Trobe University Sydney Campus
- MIBT – Deakin University, Melbourne
- MQC – Macquarie University, Sydney
- Navitas English
- Navitas Health Skills Australia
- NCPS (Navitas College of Public Safety)
- Navitas Professional
- NIC – The University of Newcastle
- PIBT – Edith Cowan University, Perth
- QIBT – Griffith University, Brisbane and the Gold Coast
- SAE Institutions – Perth, Sydney, Melbourne, Adelaide, Brisbane, Byron Bay
- SAIBT – University of South Australia, Adelaide
- SIBT – Macquarie University, Sydney

### Canada

- FIC – Simon Fraser University, Vancouver
- ICM – the University of Manitoba, Winnipeg

### United Kingdom

- BCUIIC – Birmingham City University
- CRIC – Anglia Ruskin University, Cambridge
- EIC – Edinburgh Napier University
- HIC – University of Hertfordshire, Hatfield
- ICP – University of Portsmouth
- ICRGU – Robert Gordon University, Aberdeen
- ICWS – Swansea University
- LBIC – Brunel University, London
- PUIC – Plymouth University
- SAE Institutions – Oxford, London, Liverpool, Glasgow

### United States of America

- Navitas at FAU – Florida Atlantic University
- Navitas at UMass Boston – University of Massachusetts Boston
- Navitas at UMass Dartmouth – University of Massachusetts Dartmouth
- Navitas at UMass Lowell – University of Massachusetts Lowell
- Navitas at UNH – University of New Hampshire
- Navitas at WKU – Western Kentucky University (WKU)
- SAE Institutions – Chicago, Atlanta, Los Angeles, Miami, Nashville, New York, San Francisco

### Africa

- SAE Institute, South Africa

### Asia

- ACBT – Edith Cowan University, Sri Lanka
- Curtin Singapore (The Singapore Campus of Curtin University)
- SAE Institutions – Indonesia, Malaysia, Singapore, Thailand

### Central America

- SAE Institute, Mexico

### Europe

- SAE Institutions – Austria, Belgium, France, Germany, Greece, Italy, Netherlands, Romania, Serbia, Slovenia, Spain, Sweden, Switzerland, Turkey

### Middle East

- SAE Institutions – Jordan, Saudi Arabia, UAE

### New Zealand

- SAE Institute, Auckland
- UCIC – University of Canterbury, Christchurch

Australian College of Business and Technology (ACBT) are affiliated organisations and are not owned by Navitas Limited.  
 NAVITAS USA: These schools are authorized under federal law to enroll non-immigrant alien students.  
 Registered Company names and CRICOS provider codes: SAE Institute Pty Ltd 00312F (NSW), 02431E (WA), 02047B (VIC), 03204G (QLD), Navitas Bundoora Pty Ltd trading as La Trobe Melbourne 03312D; La Trobe University 00115M (VIC), Australian Campus Network Pty Limited; La Trobe University 00115M (NSW); Colleges of Business and Technology (WA) Pty Ltd; Curtin University 00301J (WA), Colleges of Business and Technology (NSW) Pty Ltd trading as Curtin Sydney; Curtin University 02637B (NSW); Educational Enterprises Australia Pty Ltd trading as Eynesbury 00561M; The University of Adelaide 00123M; Melbourne Institute of Business and Technology Pty Ltd 01590J; Deakin University 00113B; Perth Institute of Business and Technology Pty Ltd 01312J; Edith Cowan University 00279B; Queensland Institute of Business and Technology Pty Ltd 01737F; Griffith University 00233E; South Australian Institute of Business and Technology Pty Ltd 02193C; University of South Australia 00121B; Sydney Institute of Business and Technology Pty Ltd 01576G; Macquarie University 00002I; IBT Sydney Pty Ltd trading as Macquarie City Campus; Newcastle International College 03293B; The University of Newcastle 00109I. Navitas English: Courses are delivered by Navitas English Services Pty Ltd (ACN 002 069 730), CRICOS Provider 00289M; The Certificate IV in TESOL is delivered by Navitas English Pty Ltd (ACN 003 916 701), CRICOS Provider 00031D. Centre for English Language in the University of South Australia 02193C; Hawthorn-Melbourne (Hawthorn Learning Pty Ltd, ACN 124 204 171) CRICOS provider code: 02931G; Navitas Professional Institute Pty Ltd trading as Australian College of Applied Psychology National CRICOS Provider Code: 01328A. UCIC NZQA Provider Number 7177.  
 ICM CRA BN: 81210 5146; FIC CRA BN: 81210 5146. Company Numbers: Birmingham City International College Ltd trading as Birmingham City University International College (BCUIIC) 07445570; CRIC 06407773; EIC 06822392; ICP 06770123; ICWS 6412162; HIBT Ltd trading as HIC 5163612; London IBT Ltd. trading as London Brunel International College (LBIC); Plymouth Devon International College Ltd trading as Plymouth University International College (PUIC) 06822402; ICRGU 07154254. Navitas Limited ABN 69 109 613 309

Part of the Navitas Group



Education for your world

**London IBT Ltd  
trading as  
London Brunel  
International  
College**

**at Brunel University London  
Kingston Lane, Uxbridge  
Middlesex UB8 3PH  
United Kingdom**

**T +44 (0)1895 265540  
F +44 (0)1895 269704  
E [info@lbic.brunel.ac.uk](mailto:info@lbic.brunel.ac.uk)**

Company Number 05171106;  
Registered in England and Wales.

The information contained in this guide is correct at the time of publication; however, London IBT Ltd trading as London Brunel International College (LBIC) reserves the right to alter, amend or delete details at any time without notice.

Selected photographs are copyright  
© Paul Foley/Lightmoods 2014.

This guide is provided  
free of charge.

Printed September 2014.  
LBIC2062\_0914\_AW

**[brunel.ac.uk/lbic](http://brunel.ac.uk/lbic)  
[navitas.com](http://navitas.com)**



Education The logo for the University of London, featuring a stylized 'U' and 'L' inside a circle.