

INTO 



Queen's University
Belfast



Top 1%

of universities in the world



University pathways

2015-2016

Academic and English preparation
for international students

Accredited by the



for the teaching
of English

Destination Queen's University Belfast

- 7 INTO Study Centre
- 9 Celebrating student success
- 13 About the University
- 15 Careers and employability
- 17 World-class facilities
- 19 About Belfast city
- 21 Student life
- 23 A day in the life
- 25 Student support
- 27 Accommodation

About our courses

- 30 Choosing your course
- 32 International Foundation
- 42 International Diploma
- 54 Graduate Diploma
- 60 English for University Study
- 62 Pre-sessional English

Your application

- 68 How to apply
- 69 Application form
- 72 Terms and conditions
- 74 Dates and prices



[www.intohigher.com/
queens](http://www.intohigher.com/queens)



[www.facebook.com/
intoqueensuniversitybelfast](http://www.facebook.com/intoqueensuniversitybelfast)



[www.twitter.com/
into_queens](http://www.twitter.com/into_queens)



[www.myin.to/
intoqubvideos](http://www.myin.to/intoqubvideos)



Download the mobile app at:
www.intohigher.com/queens/app



[www.instagram.com/
intoqueensbelfast](http://www.instagram.com/intoqueensbelfast)

Top 1%

of universities in the world (QS World
University Rankings 2013/UNESCO IAU)



Queen's University Belfast
has 150,000 graduates in
120 countries around the
world (Queen's Alumni Office)

At INTO Queen's University Belfast we provide international students with the opportunity to study at one of the world's best universities. As a member of the University, from your first day you will join an international student community that shares your ambition to excel in your education and go on to establish a successful career. We have the knowledge and experience to make sure you have an outstanding academic, social and cultural experience that supports your unique needs and potential.

From the first time you consider studying overseas to the moment you successfully progress to university, we will be with you every step of the way. You will have the best chance to concentrate on your studies as well as enjoying opportunities to explore a new country. It is an important time of your life, which will prepare you for living in an increasingly connected world.

Queen's University Belfast is ranked among the top 1% of universities in the world and is 12th in the UK for student satisfaction. As part of the Russell Group of universities it has a reputation for world-class research and exceptional teaching. Situated close to the heart of the beautiful city of Belfast, it also offers a culture and lifestyle which has made it one of the most popular destinations for international students.

We believe international students should have every opportunity to make their personal dreams come true. Many of those who have come to Belfast have already secured the job they aspired to when starting their studies in the UK. By choosing to study here they took the first step to achieving what we call 'world advantage' - we look forward to you joining them.



"Our international students are highly valued members of the Queen's University family, enriching our dynamic and diverse learning community and contributing to all aspects of university life. I look forward to many more students from around the world joining our University family and enjoying the exceptional 'Queen's Experience' in the future."

Professor Patrick G Johnston
President and Vice-Chancellor,
Queen's University Belfast



12th

in the UK for student satisfaction
(The Times and The Sunday Times
Good University Guide 2014)



A modern and
dynamic learning
environment



Prepare for university
success in world-class
facilities



A Russell Group university:
one of the UK's leading
research-intensive universities

Destination Queen's University Belfast



Queen's has 11 subject areas ranked within the top 10 for research in the UK and 24 in the top 20.

Latest Research Assessment Exercise



21 subject areas in the UK top 20 (The Times and The Sunday Times Good University Guide 2014)

24/7

Student support



"Belfast is a vibrant place in which to live and study and we look forward to welcoming you to your new home."

Steve Walters, Interim Centre Director

INTO Study Centre

Located in the heart of the campus, the INTO Queen's University Belfast Centre combines exceptional learning facilities with highly-qualified teachers and dedicated support. Living and learning on the University campus means you have access to the best learning and social facilities as you prepare for university life.

State-of-the-art facilities

Located within two Georgian houses, the Centre has been renovated to the highest standard and offers a world-class learning experience.

- A multipurpose lecture theatre.
- Classrooms equipped with interactive whiteboards.
- Modern IT and multimedia suites.
- A Learning Resource Centre.
- Access to the University's Virtual Learning Environment.
- Comfortable breakout areas.
- Wireless internet throughout.
- Excellent student support services, 24 hours a day.

Learning Resource Centre

The Learning Resource Centre offers a range of learning materials including books, DVDs, journals, CDs and newspapers, as well as printing and scanning facilities. Experienced and friendly Learning Resource Centre staff are available to provide help, advice and training to help students make the most of the resources available.

E-learning facilities

You will have access to the University's Virtual Learning Environment to download lecture notes and other useful course content.

Living on campus

While studying at the Centre, you will have the option of living in Elms Village student accommodation, a modern, purpose-built student village with facilities for approximately 1,890 students.

For more information, see page 27.

On-campus facilities

As an INTO student, you will have full access to the facilities at Queen's University Belfast, including the extensive McClay Library, sports facilities, the vibrant Students' Union, as well as more than 190 clubs and societies.

"At INTO Queen's we offer not only a very high academic success rate, but also a warm and supportive environment to help you complete your studies."

Steve Walters, Interim Centre Director

Live and learn in the heart of the campus



Wireless internet throughout

Excellent student support services



"I think the International Foundation programme provided me with a sound subject knowledge and high quality teaching that was similar to the teaching style used at Queen's University, so I felt better prepared in advance of starting my degree."

Vivian Chieng, Malaysia

2010

Arrived at INTO Queen's University Belfast



2011

Completed International Foundation



2013

Graduated with BSc (Hons) Medicinal Chemistry from Queen's University Belfast

Celebrating student success

In 2012–2013 more than 150 students successfully completed a pre-university academic programme at the Centre and progressed to an undergraduate or postgraduate degree programme at Queen's University Belfast.

Student placement services

To ensure that you are fully supported as you take the next step towards studying for a UK university degree, INTO offers a range of free student placement services. Staff dedicated to assisting students with university placement will provide you with practical advice on the study options available to you at Queen's University Belfast and assist you with completing your university application.

Based within the INTO Centre, these individuals will ensure that you are provided with the very best counselling and advice in relation to course choices, in addition to arranging for you to visit the academic departments within the University that you are most interested in.

Other forms of help and support available to you will include:

- one-to-one student counselling to help you select the most appropriate course to achieve your academic goals
- practical advice and assistance with all stages of the university application process, including help with writing a personal statement
- preparation for university interviews, including practice interviews
- opportunities to attend presentations by university admissions tutors
- assistance with attending university open days and higher education fairs
- opportunities to attend talks delivered by former INTO students
- access to university prospectuses
- assistance with finding an alternative university place if you need to consider other options.

92%

of successful students were eligible to progress to Queen's University Belfast

300+

students have progressed to Queen's University Belfast

Top students at Queen's University Belfast 2013

The following tables highlight the results of some of our top performing students in 2013.

Top International Foundation students at Queen's University Belfast

| Name of degree | Student name | Nationality | Final grade |
|--|---------------------------|-------------|-------------|
| Accounting | YOU Shiya | China | A*A*A* |
| Actuarial Science and Risk Management | TRAN Viet Anh | Vietnam | A*A*A* |
| Actuarial Science and Risk Management | XIAO Feng | China | A*A*A* |
| Architecture | CHEUNG Hang Chi | Hong Kong | A*A*A* |
| Architecture | Udeme UDOYEN | Nigeria | A*A*A* |
| Law | CHENG Paul Hang Kit | Hong Kong | A*A*A* |
| Law | OOI Vi Ven | Malaysia | A*A*A* |
| Mechanical Engineering | Ian Antonia LEE | Malaysia | A*A*A* |
| Pharmacy | HOANG Mai Duy | Vietnam | A*A*A* |
| Pharmacy | NG Brenda Jin | Malaysia | A*A*A* |
| Structural Engineering with Architecture | Azra Arina Binti ZAINURIN | Malaysia | A*A*A* |

Top International Diploma students at Queen's University Belfast

| Name of degree | Student name | Nationality | Final grade |
|---|--------------------|-------------|-------------|
| Software and Electronic Systems Engineering | HUI Henry | Hong Kong | 89% |
| Finance | SI Jianan | China | 88% |
| Aerospace Engineering | LEE Yiu Chun Alvin | Hong Kong | 86% |
| Computer Science | TRAN Minh Trung | Vietnam | 84% |
| Aerospace Engineering | TUNG Cheuk Yin | Hong Kong | 84% |
| Mechanical Engineering | TANG Chun Yin | Hong Kong | 83% |
| Electrical and Electronic Engineering | LI Huan | Singapore | 82% |
| Mechanical Engineering | LO Pak Luen | Hong Kong | 82% |
| Mechanical Engineering | ZAW Rai Aung | Myanmar | 81% |
| Aerospace Engineering | Martin Samuel DOGO | Nigeria | 80% |

Top Graduate Diploma students at Queen's University Belfast

| Name of degree | Student name | Nationality | Final grade |
|--|--------------------------------|-------------|-------------|
| Finance | DAI Wen Wen | China | 78% |
| Risk Management and Financial Regulation | GAN Pick Ching | Malaysia | 74% |
| Risk Management and Financial Regulation | SHEN Xing Jia | China | 74% |
| Accounting and Finance | MA Li | China | 71% |
| International MBA | WEI Shiyu | China | 71% |
| International MBA | ZHENG Yantian | China | 70% |
| International MBA | Dion Sarma Hita Pratama SITEPU | Indonesia | 67% |
| International MBA | NGUYEN LE Trung | Vietnam | 66% |

Top International Foundation students progressing to other UK universities

The high-quality preparation programmes at INTO Queen's University Belfast offer a guaranteed route to Queen's University Belfast, but are welcomed by other leading UK universities. Students studying at INTO Centres in the UK have progressed to over 109 UK universities, including nine of the UK's top 10 universities. The table below highlights some of the top students who completed their International Foundation at INTO Queen's University Belfast and progressed to another leading UK university.

Top International Foundation students progressing to other UK universities

| Destination university | Name of degree | Student name | Nationality | Final grade |
|------------------------------|--------------------------------------|----------------------------|-------------|-------------|
| The University of Manchester | Psychology | Xia Shin QUEK | Malaysia | 86% |
| University of St Andrews | Geology | Lanita GUTIEVA | Russia | 84% |
| The University of Liverpool | Archaeology of Ancient Civilisations | Dooinn KIM | South Korea | 78% |
| Cardiff University | Biomedical Science | Abeer Said Mohamed AL-ABRY | Oman | 71% |
| University of Leicester | Mathematics and Actuarial Science | Bader Nasser Salim AL ABRI | Oman | 66% |
| The University of Hull | Law | Chiat KHOR | Malaysia | 61% |



"I would recommend INTO Queen's to students who really want to progress to university. INTO helped me by letting me know what to expect in the UK education system before beginning lectures and seminars in university."

Chan Justin, Hong Kong

▼ Queen's University Belfast, Lanyon Building



Belfast is 50 minutes from London by plane

Belfast

London

Belfast has two airports, with cheap, regular flights to Europe and other UK cities

Queen's Area 2

Queen's Area 1

Queen's Area 3

- ROADS
- BUILDINGS
- SIGNIFICANT AREA 1 BUILDINGS
- SIGNIFICANT AREA 2 BUILDINGS
- SIGNIFICANT AREA 3 BUILDINGS
- CAFÉ/RESTAURANT
- UNIVERSITY ACCOMMODATION
- CRÈCHES
- INTO QUEEN'S UNIVERSITY BELFAST CENTRE

0 100 200 metres

About the University

Through a unique blend of heritage, tradition, innovation and future-thinking values, Queen's University inspires each and every one of its students to realise their full potential and enjoy a truly first-class student experience.

A Russell Group university

Established by Queen Victoria in 1845, Queen's is one of the UK's leading research-intensive universities and a member of the Russell Group, an independent body of 24 top-ranking, research-led universities in the UK. These research strengths are reflected in exceptional teaching standards and independent assessments demonstrate that Queen's is consistently in the top rank of UK universities.

Research and teaching excellence

With an extensive, dynamic and broad-based curriculum, there is something for all prospective students at Queen's.

In Arts, Humanities and Social Sciences, the breadth of provision is enormous, embracing the traditional disciplines as well as more recent introductions, such as Drama and Film Studies. Across Engineering and Physical Sciences, students benefit from the extensive refurbishment of laboratories and other teaching provisions. In Medicine, Health and Life Sciences, students have access to first-class facilities and a range of courses based on the needs of future healthcare professionals and life scientists.

The latest UK Research Assessment Exercise (RAE) confirmed that, across all academic areas, Queen's research is ranked and assessed as 'world-leading', while The National Student Survey, the most important measure of student satisfaction, puts Queen's University Belfast 12th in the UK - the University's highest-ever position.

Award-winning

The QS World University Rankings for 2012-2013* put Queen's as one of the top 200 universities in the world, placing it in the top 1% of world universities. Queen's has also been confirmed as one of the top universities in the UK and is ranked 29th overall according to The Times and The Sunday Times Good University Guide 2014. The Guide has also recognised Queen's recent investments by ranking the University seventh in the UK for facilities.

Innovative

Five Times Higher Education Awards recognise the spirit of innovation at Queen's: Excellence and Innovation in the Arts in 2008; UK Entrepreneurial University of the Year in 2009; Outstanding Engineering Research Team of the Year in 2010; Most Innovative Teacher of the Year in 2011; and Outstanding Fundraising Team in 2012.

The award won in 2009 demonstrates Queen's commitment to delivering an education programme rooted in the needs of today's society and ensuring students have the right skills for the world today.

Queen's is at the forefront of using Information and Communications Technology (ICT) to support learning and teaching. It has blended e-learning with strong traditional learning and teaching values to create a flexible and dynamic learning experience.

* Based on 17,568 universities in the world registered with UNESCO IAU

Competitive

Queen's is committed to the development of a research and education portfolio that is competitive with the best in the world. The results of the latest UK Research Assessment Exercise demonstrated the University's world-leading role across all disciplines and in areas central to the future of the University, including engineering, medicine and the humanities. The results also showed that Queen's has 11 subject areas ranked within the top 10 in the UK.

Alumni and the future

Queen's students join an academic institution with a distinguished past. Along with successive generations of graduates who have made their mark on many spheres of life around the world, alumni include Nobel prize-winning poet, the late Seamus Heaney, and Northern Ireland's former First Minister, David Trimble. Other distinguished Queen's graduates include former President of Ireland Mary McAleese, former US President Bill Clinton, former South African President the late Nelson Mandela, and Professor Frank Pantridge, who developed the mobile coronary care unit.

A unique blend of heritage,
tradition and innovation



7th

in the UK for facilities
(The Times and The Sunday Times
Good University Guide 2014)



▲ Careers, Employability and Skills Service



Careers and employability

Employability is at the heart of the Queen's curriculum, and careers guidance and information are an integral part of all School-level induction programmes.

Career-focused

Queen's Degree Plus Award aims to give students a competitive edge in the graduate job market. This innovative programme acknowledges skills gained through participation in extracurricular activities such as voluntary work, part-time jobs and sport – skills that are of particular interest to potential employers.

Enterprise

In 2011, an academic from Queen's University Management School was named the number one enterprise educator in the world and also won Most Innovative Teacher of the Year at the Times Higher Education Awards. To cap this, a Certificate in Entrepreneurship Studies now fully embeds entrepreneurship skills into the University's curriculum to help students develop all-important 'enterprise for life' skills.

Work-ready graduates

The University is ranked 26th in the UK for graduate employment, which helps explain why Queen's graduates play a leading role in the senior management of 80 of Northern Ireland's top 100 companies.

"Queen's has a Student Guidance Centre which provides a support service to students to improve your management and leadership skills. The combination of being able to attend these courses outside of studying provides me with a great opportunity to impress employers and get more out of my degree."

Clement Tang, Malaysia

94%

of graduates are in employment or further study within six months of graduation



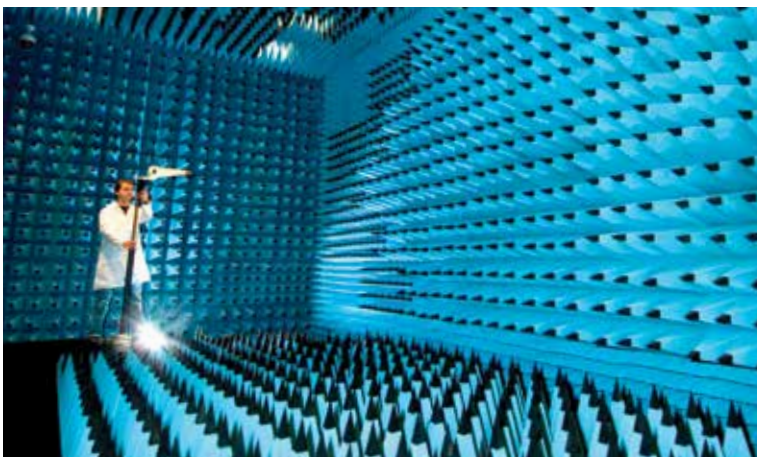
26th

in the UK for graduate-level employment
(The Times and The Sunday Times Good University Guide 2014)

▼ The award-winning McClay Library



▼ Physical Education Centre (PEC)



▲ The Institute of Electronics, Communications and Information Technology (ECIT) is a world-class research centre in the Titanic Quarter



The state-of-the-art Physical Education Centre (PEC) is one of the most advanced sport and fitness facilities in the UK and Ireland

World-class facilities

When it comes to facilities, Queen's has recently invested over £259 million in some of the best campus facilities in the UK and Ireland. These include the magnificent McClay Library, one of the finest university libraries in the world, containing 1.2 million volumes and 2,200 reader places; Riddel Hall, home to the new William J Clinton Leadership Institute; the emerging Health Sciences Research Campus and Elms Student Village.

Culture and arts at Queen's

Queen's University Belfast is proud to be a driving force in Northern Ireland's recent cultural, artistic and economic renaissance, celebrating the innovation and creativity of its people and enhancing its reputation as an international centre of learning.

The University is home to the Ulster Bank Belfast Festival at Queen's, which showcases the best of the local and international arts scenes. It also houses Northern Ireland's only art house cinema in the QFT, as well as the award-winning Naughton Gallery. Queen's runs a host of annual cultural and artistic events. The Seamus Heaney Centre for Poetry reinforces the University's reputation as a world literary force, while the Brian Friel Centre for Theatre Research at Queen's provides a world-class studio theatre for performing arts students.

Queen's Sport

The state-of-the-art Physical Education Centre (PEC) is one of the most advanced sport and fitness facilities in the UK and Ireland. The University has a proud reputation for hosting major intervarsity and international events and was chosen as one of the official training camps for athletes competing in the London 2012 Olympic Games.

Students enrolled in the INTO Queen's Centre enjoy free membership of the PEC for the duration of their study. For more information, visit: www.queenssport.com

International and Postgraduate Student Centre

The International and Postgraduate Student Centre (I&PSC) is home to International Student Support, which specialises in immigration advice for international applicants and students. International applicants should contact the team with any queries about visa applications prior to coming to the UK, or about extending their current visa in order to study at Queen's.

Staff in this office are permitted to provide immigration advice and liaise closely with INTO Queen's Admissions to ensure students have the proper documents to be able to study at Queen's.

For more information, please contact:

T: +44 28 9097 3899

E: iss@qub.ac.uk

www.qub.ac.uk/isso

For more information and student Q&As about INTO Queen's University facilities, visit: www.myin.to/INTOQUBvideos



The award-winning McClay Library brings together library, computing and media services in a single location

▼ Titanic Belfast



“Places like the MAC theatre, Botanic Gardens and Victoria Square offer lots of things for students outside their studies.”
Annahita Lashgari, Iran



▼ World Heritage Site the Giant's Causeway

▲ Victoria Square shopping centre



About Belfast city

Belfast is the capital city of the UK region of Northern Ireland, which is located in the northern part of the island of Ireland. Belfast has a modern transport infrastructure with two airports and daily flights to major British, European and North American destinations. It is less than one hour from London by plane and is easily accessible from other parts of the UK and Europe.

The campus

The University's historic campus is set in the beautiful leafy suburb of south Belfast and is just a 10-minute walk from the vibrant city centre. Described as one of Europe's most friendly and fashionable regional capitals, Belfast is a 'must-see visitor destination' (Lonely Planet) and was recently voted one of the world's top 10 destinations by National Geographic Traveler magazine.

The city

Belfast boasts a wide range of entertainment venues including an arena, concert hall and opera house, as well as more intimate theatres and clubs. Together they play host to international music artists, such as Lady Gaga, U2 and the Foo Fighters, and world-class music events such as the MTV Europe Music Awards, as well as stand-up comedy and theatrical performances. The University's Students' Union also regularly stages bands and other entertainment.

Film fans will be impressed by the range of multiplex cinemas throughout the city, as well as the University's own full-time cinema, the Queen's Film Theatre (QFT), which presents the best in classic and new world cinema.

A shopper's paradise

Belfast offers shoppers a mix of big-name stores, designer boutiques, innovative arts and crafts shops and rejuvenated markets. City-centre shopping centres, such as Victoria Square and Castle Court, offer a wide selection of High Street shops for all tastes. There is also a variety of vintage, charity and low-cost outlets throughout the city.

World cuisine

From the finest European and world cuisine to Michelin-starred local restaurants and budget cafés, Belfast offers something to suit every culinary taste and budget. Historic pubs, stylish bars and cool clubs help to ensure Belfast lives up to its reputation as a 'treasure' with an 'incredible atmosphere' (National Geographic Traveler 2012).

For more information, visit Belfast's official tourism websites at www.gotobelfast.com and www.discovernorthernireland.com

A safe place

Northern Ireland was recently named the safest region in the UK (British Crime Survey 2012). Queen's University is located in a quiet residential suburb about 10 minutes' walk from Belfast city centre. Street crime and burglary rates in Belfast are much lower than in comparable European or American cities (Northern Ireland Annual Abstract of Statistics 2009).

Rain or shine

Northern Ireland is lucky with its climate. Winters are milder than areas further east and south of Europe, and visitors often comment on the quality of the region's fresh air and clean environment.

Cost of living

In the 2012 Worldwide Cost of Living survey carried out by Mercer, Belfast was recognised as having the lowest cost of living in the UK.

Queen's offers UK and International students significant financial incentives to help manage the cost of university fees and to help reduce the cost of living for every student.

Students should allow roughly £5,500-£7,000 to cover expenses for a full year. Please note that the amounts suggested do not take account of funds to support any dependants.

For immigration purposes, non-EU students will be required to show evidence of funds to cover living expenses.

The official currency of Northern Ireland is the pound sterling (£).

For more information, visit: www.gov.uk/bringing-cash-into-uk

Lowest cost of living in the UK
(Mercer.com 2012)

Safest region in the UK
(British Crime Survey 2012)

▼ Queen's Students' Union



▼ Enterprise SU in Queen's Students' Union



▼ Clements coffee shop in the Students' Union



Student life

Make the most of your student experience by getting involved in the wide range of extracurricular activities offered at Queen's University Belfast. Our Students' Union, societies and clubs will help you to meet and make friends with other students and feel part of campus life.

A global institution

The student population of Queen's is over 17,000, approximately 1,400 of whom are international students from nearly 100 countries. Queen's graduates make their mark all over the world in fields as diverse as surgery, civil engineering and music. As a result of this, there are active graduate associations in Australia, Belgium, Canada, Hong Kong, Malaysia and the USA.

Queen's Students' Union

The Students' Union at Queen's offers students an opportunity to socialise and make friends with peers from a diverse range of countries and cultures. It already ranks in the top five students' unions in the UK and aims to become number one.

The Students' Union building boasts an entertainment complex, shops, cafés, and hosts a varied programme of concerts, comedy and live sport. There are more than 190 student clubs and societies catering for almost every type of interest and cultural background.

The Union also offers a range of student support services and provides advice on developing business ideas through its Enterprise SU facility.

For more information, visit: www.qubsu.org

"If you choose to study at INTO Queen's University Belfast, you will benefit from quality-assured university courses delivered on a world-class Russell Group university campus, and the opportunity to progress to a wide range of undergraduate and postgraduate courses at Queen's. We look forward to welcoming you to our campus."

Isabel Jennings, Director of Student Plus

12th

with an overall satisfaction score of 90%, by the UK National Student Survey of UK universities (2013)

See student life at INTO on Instagram:
www.instagram.com/intoqueensbelfast





"My teachers are extremely friendly, understanding and supportive."

Omar Elghawaby, Egypt



A day in the life

International Foundation student Omar Elghawaby from Egypt talks about a typical day at INTO Queen's University Belfast.

Morning

8.00am

My day usually starts at 8am when I wake up, have a shower and go into the kitchen for breakfast at Elms Village. It's really good having breakfast with my flat mates from England, Northern Ireland, Iran and Myanmar.

8.50am

I leave the Queen's Elms Village student accommodation to go to class, which takes about 11 minutes to walk! I walk down to class with my friends.

9.00am

My first class starts. We have two hours of lectures, which require a lot of concentration. The lesson comprises class discussion about the new theories and topics our lecturer is teaching us. We have a mixture of question and answer sessions.

My teachers are extremely friendly, understanding and supportive. I feel like they are more our friends than our lecturers, which helps us to understand and develop our communication skills.

10.00am

We get a 10-minute break from class to get a coffee at the INTO Queen's café, and debate with our classmates about the first hour of the lesson before going back to class.

10.15am

We return for our second half of the class to continue with our topic and usually get homework.

11.00am

Our first lesson finishes and all the students meet in the café area to chat and socialise with each other to refresh our mind before the next lesson. The INTO Queen's Centre is amazing because it is a culturally diverse environment. I learn about other cultures and the basics of different languages which is really cool.

Afternoon

12.00pm

The next lesson commences. There are a lot of class assessments to evaluate your progress and development of the subjects.

2.00pm

Class finishes and it's lunchtime. My lunchtimes vary depending on which day it is, but usually is between 12-2pm. I usually have lunch with my friends at a local café or restaurant. There are a lot of restaurants situated close by the INTO Queen's Centre, the food is really cheap for students as most of the restaurants offer student discount. It usually costs me around £3 for lunch.

3.00pm

I arrive back to the INTO Queen's Centre for my next lesson. Our lessons may be held at the Queen's University facilities such as the McClay Library or the computer lab. The facilities at Queen's are really well equipped for study; they are quite modern and equipped with the latest technology. The variety of books in the Library is really interesting as you can read about the latest theories and have many books to take references from.

Evening

5.00pm

After class, I normally go to the Physical Education Centre (PEC) at Queen's to work out, which is an honour training in the place where the Olympic athletes trained. Membership to the PEC at Queen's is free for INTO Queen's students and you can join in any club or society to join the dream sport you always wanted to play. I've started to play rugby and I would like to join the Queen's rugby team when I progress to the University.

6.30pm

It's shopping time so I go to Tesco, which is a very cheap supermarket for groceries and it's close to the PEC.

I buy my ingredients for my food and make my way back to the Elms Village student accommodation.

My cooking skills have really improved, I'm being taught by different nationalities and can cook a variety of dishes from around the world. My speciality is steak with gravy.

8.30pm

I either study or go to experience the nightlife in Belfast. It's important that students find a balance to study some nights and socialise on other nights. Monday night is student night in Mandela Hall at Queen's Students' Union. The music is really good, there are a lot of music genres at the Students' Union depending on which bar you go to.

Belfast is really famous for its nightlife and variety of activities on offer but if you come to study here, balance your social and academic life so you do not fail in your studies.

12.30am

Sleep time!



“We are happy to provide all immigration advice to students at INTO and Queen’s University Belfast at International Student Support. We aim to help all students get the correct visa at the correct time to make sure they can concentrate on their studies.”

Rebecca Rutherford,
Head of the International and Postgraduate Student Centre



Airport pickup service from the airport to your accommodation

Student support

Choosing to study at Queen's means embarking on a life-changing journey and the extensive support network at the University is there to guide students every step of the way. Whether it's support with applications, essential information to prepare for arrival, or help settling in to student life, support services are there to help.

Applications

First point of contact is likely to be with one of INTO's education counsellors in your home country. Always happy to help, they recognise the importance of the choices and have in-depth knowledge of the INTO Centre, the University and the courses on offer. They will gladly answer any questions and assist with the application process.

For further information see page 68.

Students who are under the age of 18

Before the Centre accepts a student younger than 18 years of age, parents must sign a consent form agreeing the outlines of the INTO Under 18 Policy. Relevant forms will be sent to parents and the student with confirmation documents. No student will be accepted at the Centre without completing and returning these forms before the start of the course.

A copy of INTO's Under 18 Policy is available on request.

Coming to the UK

Once an offer has been accepted, a pre-departure guide containing practical information will be sent out to help in preparing for travel to the UK, arrival in Belfast and course enrolment.

The guide is also available as a mobile app.

Download the pre-departure guide:

www.intohigher.com/qub/pdg

Airport pickup service

An airport pickup service from George Best Belfast City Airport and Belfast International Airport is available for an additional charge.

Pastoral care

INTO is dedicated to ensuring the total safety and support of its students.

On arrival, the Student Services team will provide guidance on settling in to student life in Belfast, and will remain as the first point of contact throughout for any non-academic issues.

Support services offered include:

- a comprehensive orientation programme during first week
- 24-hour emergency telephone number
- Language Advisers who can help students with a low level of English to communicate
- Residential Assistants within student residences
- visa and immigration support, including workshops and individual appointments
- support for students with disabilities
- student clubs and social programmes.

Monitored attendance

Good attendance is key to academic success. INTO Queen's University Belfast expects students to attend all academic sessions. Student attendance is monitored carefully and where attendance is not satisfactory, the Centre has an absence procedure.

The Centre has an additional obligation to report to UK Visas and Immigration any changes that may affect the terms of an international student's visa, including absence from the programme.

University support services

As well as the normal system of study advisers and tutors, the University offers additional support services. These include extensive chaplaincy services, the University Health Centre, dedicated student counsellors, the Careers, Employability and Skills Service, and the Disability Services unit.

Links to British Council offices across the world: www.britishcouncil.org

The British Council's website for international students interested in studying in the UK (includes information on Queen's University Belfast in various languages): www.educationuk.org

UKCISA - the UK Council for International Student Affairs - provides advice and information to international students studying in the UK: www.ukcisa.org.uk

Advice on applying for a UK visa: www.ukvisas.gov.uk/en

24-hour emergency telephone number

Download the pre-departure guide app:
www.intohigher.com/queens/app



▼ Single study bedrooms with free internet access



▼ Communal areas for socialising

▲ Shared kitchens and common room



"I would recommend that students live in the Elms accommodation for the first year of living in Belfast as it's a good way to socialise outside class and prevent culture shock."
Mohammad Azfar Zainurin, Malaysia

A safe and secure environment for students to live, work and socialise

Accommodation

At INTO Queen's University Belfast, students get the chance to live alongside UK and international students in University residential accommodation. This integrated community is a vibrant and stimulating environment in which to live and learn together.

University residences

Queen's residential accommodation is among the best and most modern in the UK.

Elms Student Village is in a pleasant residential area, within walking distance of both the University and the INTO Centre. Accommodation blocks are three floors high and on each floor there are 11 bedrooms with communal social space.

At the heart of the Student Village is the Treehouse, with a restaurant and bar, wired and Wi-Fi internet, a shop, laundry, and a reception desk where you can find help and support from accommodation staff and the Residential Life team.

A key feature of the accommodation is a high-speed internet service providing a dedicated, 20MB-speed, wired connection to each student bedroom (up to 10MB wireless), and includes:

- 'Freeview' and international television channels available on personal computers*
- online game-playing service
- internet telephone services.

Accommodation includes:

- en suite shower
- shared kitchen and common room, dining table, soft seating and a television
- reception open 24/7, and security cover
- a safe and secure environment for students to live, work and socialise.

* Students can choose to upgrade their package at any time to gain enhanced features such as more bandwidth or additional television channels. For more information please visit: <http://portal.ask4.com>

Living in Queen's accommodation comes with a wide range of benefits:

Privacy - rooms are private spaces to look after and enjoy.

Active social life - there is a lot happening in Elms Village and across campus.

You're in good company - over 2,400 UK and international students live in university residences.

Support - Student Accommodation staff and a Residential Life team are there to help students settle in and assist with any problems that may arise.

No hidden extras - rates include utility bills, 24-hour security, 24-hour reception, regular cleaning of communal areas, a television in common rooms and internet service.

Student support

Within the University residences, a team of Residential Assistants live in the accommodation and provide support to students during out-of-office hours.

Experienced Residential Life Co-ordinators offer help and support, as well as organise social events.

Catering

Accommodation is offered on a self-catered basis. Credit added to students' Student Cards can be used to pay for snacks and meals in the range of cafés and restaurants across the University. This is called 'Queen's Easy Pay' and the credit on Student Cards can be used to make other purchases on campus such as photocopying and printing.

It is recommended that students start off with a credit of £200, to purchase a wide range of meals on campus during the first month.

Parents can add money to this card via the Internet.

Alternative accommodation

Alternative options may be arranged to suit individual requirements.

For more information, please contact the Student Services team at into@qub.ac.uk as soon as possible, if you have any requests.

To find out more about what makes Queen's University exceptional, view our video at: www.intohigher.com/queens/university



£45m

investment in providing excellent facilities at Elms Student Village



A range of academic programmes to prepare you for university success

About our courses



The highest teaching standards
from experienced professionals

Flexible English
language courses,
with both year-round
and summer options

Choosing your course

INTO Queen's University Belfast offers a wide range of academic programmes and English language courses designed specifically for international students. The courses help to prepare you for entry to Queen's University and adapt to living and studying in a UK university environment.

| INTO course | Start dates | English language requirements* | Length | Progression options |
|------------------------------|------------------------------------|--|---------------------|--|
| International Foundation | April, June, September and January | From IELTS 4.0 to IELTS 5.0 depending on course length | 3, 4 or 5 terms | Undergraduate degree Year 1 |
| International Diploma | April, June, September and January | From IELTS 4.5 to IELTS 5.5 depending on course length | 3, 4 or 5 terms | Undergraduate degree Year 2 |
| Graduate Diploma | June, September and January | IELTS 5.0 to IELTS 5.5 depending on course length | 3 and 4 terms | Master's degree |
| English for University Study | September, January, April and June | From IELTS 3.0 (with a minimum of 3.0 in writing) | Minimum of one term | Any INTO academic programme or University degree |
| Pre-sessional English | June, July and August | From IELTS 5.0 to IELTS 6.5 depending on course length and degree course | 4, 6 or 10 weeks | University degree |

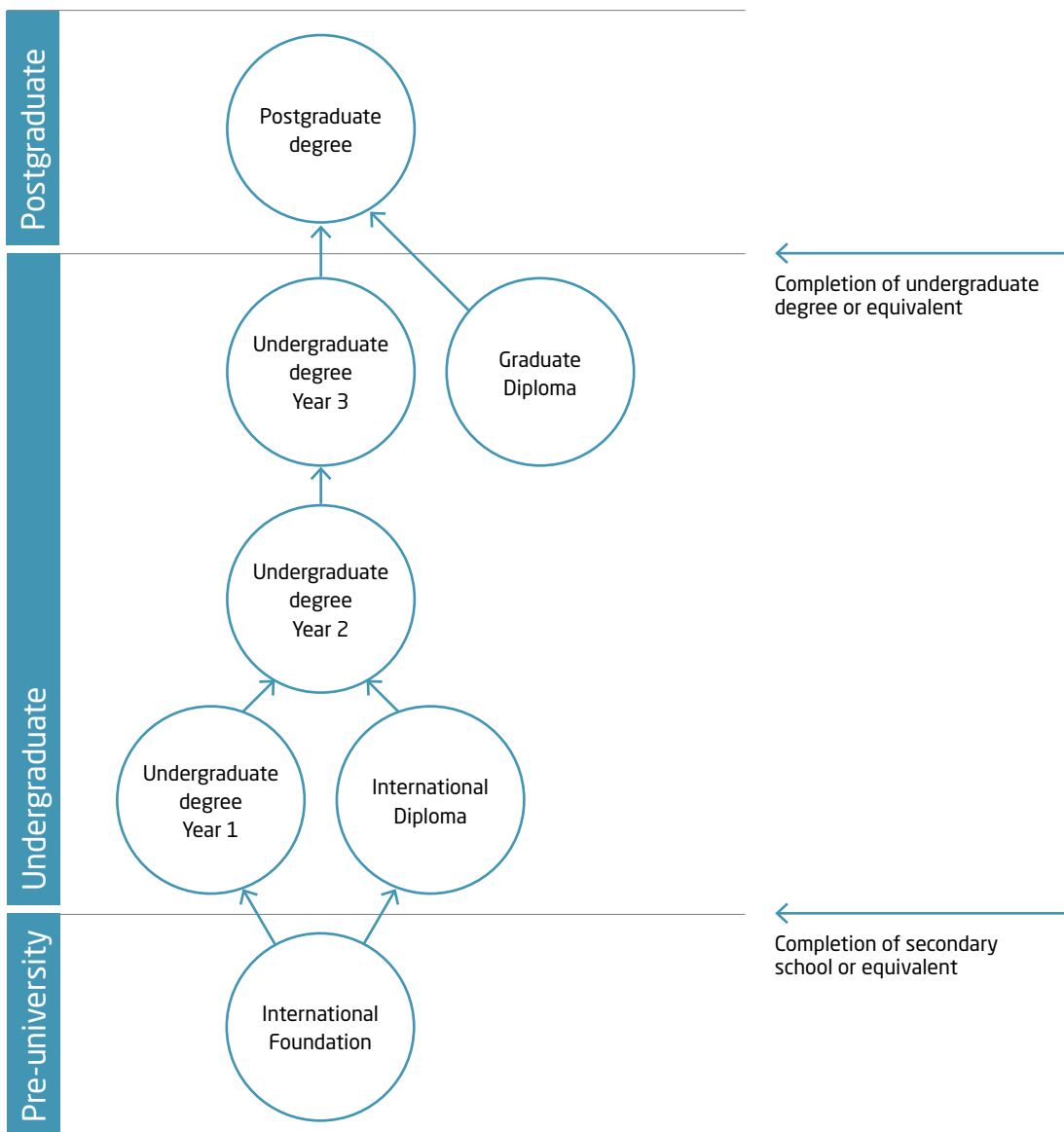
* The above information is only a guide. Depending on the course, in addition to meeting the overall IELTS requirement you may need to achieve specific scores in specified subskills. Please see the relevant course page for full details.

"At INTO Queen's University Belfast we offer a range of high quality academic subject and English language and study skills courses designed to equip you with all the knowledge and skills you need to embark successfully upon university study."

Dr Brian Webb, Academic Director



Whatever your academic ambitions, our university-accredited academic preparation programmes will help you make the transition to the UK education system and progress to your chosen degree at Queen’s University Belfast. If you do not meet the minimum English language requirements, we offer a range of English language courses to prepare you for university study.



International Foundation

The International Foundation prepares you for direct entry to the first year of an undergraduate course at Queen’s University Belfast. We offer two broad pathways in Business, Humanities and Social Sciences; and Engineering and Science.

What is the International Foundation?

The International Foundation combines academic study, intensive English language preparation, study skills and cultural orientation – all that is necessary for successful university study.

What is special about the programme?

- A quality-assured university programme.
- Full university status.
- A campus-based programme with access to world-class university support and facilities.
- University-style teaching supported by extensive e-learning provision.
- High contact hours and small class sizes.
- Experienced and well-qualified teachers.
- A conditional offer of a place on the first year of a relevant undergraduate degree at Queen’s University Belfast.
- Guaranteed university placement for all successful students.
- Professional support and guidance with university applications.

What if I do not meet the minimum English language requirements?

Lasting four or five terms, the Extended Foundation incorporates one or two terms of intensive English language tuition at the beginning of the course, allowing you to begin your course and improve your English to a level appropriate for academic study. You will be required to pass the initial English language component before progressing to the next stage of the programme. Examples of the combined programmes are set out in the diagram below.

If you need to study more than two terms of English in order to reach the level necessary for academic study, you should apply for English for University Study. See page 60 for further information.

How is the programme validated?

The International Foundation is accredited and quality-assured by Queen’s University Belfast. Successful completion leads to the award of Queen’s University International Foundation Certificate (National Qualification Framework Level 3), which is welcomed as an entry qualification both at Queen’s University Belfast and other highly ranked UK universities.

Academic guidance

You will receive support from your tutor on personal and academic issues, including advice on your studies and career plans. We also have an International Progression Officer who will help with your application to Queen’s University Belfast and arrange visits to your academic School, so that you can learn more about your chosen degree programme.

Recommended study plan and progression route

| 2015 | | | | | | | | | | | | 2016 | | | | | | | | | | | | 2017 | | | | | |
|--|-----|-----|-----|--|-----|-----|-----|--|-----|-----|-----|---|-----|-----|-----|-----|-----|-----|-----|-----------------------------|-----------------------------|-----|-----|------|-----------------------------|--|--|--|--|
| APR | MAY | JUN | JUL | AUG | SEP | OCT | NOV | DEC | JAN | FEB | MAR | APR | MAY | JUN | JUL | AUG | SEP | OCT | NOV | DEC | JAN | FEB | MAR | APR | MAY | | | | |
| IELTS 4.0 Extended Foundation programme (5 term) | | | | | | | | | | | | | | | | | | | | Undergraduate degree Year 1 | | | | | | | | | |
| IELTS 3.5 EUS | | | | IELTS 4.0 Extended Foundation programme (5 term) | | | | | | | | | | | | | | | | | Undergraduate degree Year 1 | | | | | | | | |
| IELTS 4.0 EUS | | | | IELTS 4.5 Extended Foundation programme (4 term) | | | | | | | | | | | | | | | | | Undergraduate degree Year 1 | | | | | | | | |
| | | | | IELTS 4.0 EUS | | | | IELTS 4.5 Extended Foundation programme (4 term) | | | | | | | | | | | | | | | | | Undergraduate degree Year 1 | | | | |
| | | | | IELTS 4.5 EUS | | | | IELTS 5.0 Foundation programme (3 term) | | | | | | | | | | | | | | | | | Undergraduate degree Year 1 | | | | |
| | | | | IELTS 4.5 EUS | | | | | | | | IELTS 5.0 Foundation programme (3 term) | | | | | | | | | Undergraduate degree Year 1 | | | | | | | | |

EUS: English for University Study



"INTO Queen's has helped me build a very strong foundation for the Aerospace Engineering course at Queen's University Belfast. The University caters to the requirements of students from diverse backgrounds and provides me with a world class education whilst developing every student holistically."

Ghassan Eissa, Sudan

International Foundation

Business, Humanities and Social Sciences

The programme provides subject-specific modules that relate to the academic content of your chosen undergraduate degree. Individual degree programmes also stipulate specific modules that you must study before progression. You will study four modules in total, including three academic content modules and a compulsory English Language and Study Skills module.

International Foundation in Business, Humanities and Social Sciences (120 credits)

| Core modules | Specialist modules |
|--|--|
| English Language and Study Skills (30 credits) | Foundation Business Studies (30 credits) |
| | Foundation Economics (30 credits) |
| | Foundation Politics and International Relations (30 credits) |
| | Foundation Mathematics for Business, Humanities and Social Sciences (30 credits) |
| | Or |
| | Foundation Mathematics for Engineering and Science (30 credits)** |
| | Further Mathematics for Engineering and Science (30 credits)** |

See pages 40 and 41 for descriptions of core and specialist modules for this pathway.

** If you choose to study Further Mathematics for Engineering and Science you must take Foundation Mathematics for Engineering and Science. Otherwise, if you choose a mathematics module you must study Foundation Mathematics for Business, Humanities and Social Sciences.

Key course facts

Start dates

April, June, September and January

Programme length

3 terms or approximately 9 months
4 terms or approximately 12 months
5 terms or approximately 15 months

Class hours

20 hours per week minimum

Age requirement

17 years and above*

Academic entry requirements

Completion of 12 years of schooling (or the local equivalent to meet the same standard) with good grades.

English language entry requirement

3 term: a minimum of IELTS 5.0 (with a minimum of 5.0 in writing and no less than 4.5 in all other subskills) or equivalent

4 term: a minimum of IELTS 4.5 (with a minimum of 4.5 in writing and no less than 4.0 in all other subskills) or equivalent

5 term: a minimum of IELTS 4.0 (with a minimum of 4.0 in all subskills) or equivalent

The Centre accepts other Secure English Language Tests (SELT) including Pearson PTE.

If you do not meet the minimum English language requirements you should apply for English for University Study. See page 60 for course details.

For further guidance please check with the INTO Admissions Office or your local education counsellor.

* All students commencing courses on a published September start date must be 17 years old by 31 December of that calendar year. For all other start dates, students must be 17 years old on the published start date of the course.



For course dates and prices, see page 74

Progression to Queen's University Belfast

The table below provides detailed information about the English language requirements and grade profile you need to achieve to be guaranteed a place on some of the most popular degree programmes at Queen's University. If you do not see the course you are interested in, please contact INTO Queen's University Belfast.

Progression route for Business, Humanities and Social Sciences pathway[†]

| Programme title | Degree | Length of study | EAP grade* | Grade profile for progression in 2015 |
|--|--------|-----------------|------------|--|
| Accounting, Economics, Management and Finance | | | | |
| Accounting | BSc | 3 years | B | ABB + GCSE Mathematics grade B or equivalent |
| Actuarial Science and Risk Management** | BSc | 3/4 years | B | AAA including Mathematics |
| Business Economics | BSc | 3 years | B | BBB + GCSE Mathematics grade B or equivalent |
| Business Management | BSc | 3 years | B | BBB + GCSE Mathematics grade B or equivalent |
| Economics | BSc | 3 years | B | BBB + GCSE Mathematics grade B or equivalent |
| Economics and Accounting | BSc | 3 years | B | BBB + GCSE Mathematics grade B or equivalent |
| Economics with Finance | BSc | 3 years | B | BBB + GCSE Mathematics grade B or equivalent |
| Finance** | BSc | 3/4 years | B | BBB + GCSE Mathematics grade B or equivalent |
| Humanities and Social Sciences | | | | |
| Archaeology | BA | 3 years | B | BBC |
| Criminology | BA | 3 years | B | BBB |
| Film Studies | BA | 3 years | B | BBC |
| International Politics and Conflict Studies | BA | 3 years | B | BBC |
| Philosophy | BA | 3 years | B | BBC |
| Politics | BA | 3 years | B | BBC |
| Politics, Philosophy and Economics | BA | 3 years | B | ABB + GCSE Mathematics grade B or equivalent |
| Social Anthropology | BA | 3 years | B | BBC |
| Sociology | BA | 3 years | B | BBC |
| Law | | | | |
| Law | LLB | 3 years | B | ABB |
| Law with Politics | LLB | 3 years | B | ABB |

[†] For progression degrees that do not specify particular subject requirements for entry, suitably qualified students may choose to study either the International Foundation in Business, Humanities and Social Sciences or in Engineering and Science.

* For progression to Queen's University Belfast students must achieve a minimum of grade D in each component.

** Indicates courses which are offered with and without a Sandwich year option; or where a Sandwich year is normally a required element of the degree programme, but international students can be exempt from it. Students undertaking a year of professional experience (Sandwich year) do not need a work permit as long as the placement is in the UK. Students who do not take the year of professional experience are transferred to an equivalent programme without the extension 'with Professional Experience' in the title.

International Foundation Engineering and Science

The programme provides subject-specific modules that relate to the academic content of your chosen undergraduate degree. Individual degree programmes also stipulate specific modules that you must study before progression. You will study four modules in total, including three academic content modules (one of which is compulsory) and a compulsory English Language and Study Skills module.

International Foundation in Engineering and Science (120 credits)

| Core modules | Specialist modules |
|---|--|
| English Language and Study Skills (30 credits) | Foundation Biology (30 credits) |
| Foundation Mathematics for Engineering and Science (30 credits) | Foundation Chemistry (30 credits) |
| | Foundation Physics (30 credits) |
| | Further Mathematics for Engineering and Science (30 credits) |

See pages 40 and 41 for descriptions of core and specialist modules for this pathway.

To enhance the student learning experience outside the classroom and allow you to experience university-level facilities and teaching, there are a number of visits and field trips organised during the programme.

Progression to Queen's University Belfast

The table opposite provides detailed information about the English language requirements and grade profile you need to achieve to be guaranteed a place on some of the most popular degree programmes at Queen's University.

The International Foundation is acceptable for entry to many other undergraduate degree programmes at Queen's, with the exception of Agricultural Technology, Medicine, Dentistry and Social Work.

Note: due to the competition for places and the limited number of placements available, the normal progression guarantee does not apply to degree programmes in Midwifery Sciences or Nursing.

For more information on degrees available please contact INTO Queen's University Belfast.

Key course facts

Start dates

April, June, September and January

Programme length

3 terms or approximately 9 months
4 terms or approximately 12 months
5 terms or approximately 15 months

Class hours

20 hours per week minimum

Age requirement

17 years and above*

Academic entry requirements

Completion of 12 years of schooling (or the local equivalent to meet the same standard) with good grades.

English language entry requirement

3 term: a minimum of IELTS 5.0 (with a minimum of 5.0 in writing and no less than 4.5 in all other subskills) or equivalent

4 term: a minimum of IELTS 4.5 (with a minimum of 4.5 in writing and no less than 4.0 in all other subskills) or equivalent

5 term: a minimum of IELTS 4.0 (with a minimum of 4.0 in all subskills) or equivalent

The Centre accepts other Secure English Language Tests (SELT) including Pearson PTE.

If you do not meet the minimum English language requirements you should apply for English for University Study. See page 60 for course details.

For further guidance please check with the INTO Admissions Office or your local education counsellor.

* All students commencing courses on a published September start date must be 17 years old by 31 December of that calendar year. For all other start dates, students must be 17 years old on the published start date of the course.



For course dates
and prices, see
page 74

Progression route for Engineering and Science pathway[†]

| Programme title | Degree | Length of study | EAP grade* | Grade profile for progression in 2015 |
|---|---------------------|-----------------|----------------|--|
| Biomedical Sciences | | | | |
| Biomedical Science | BSc | 3 years | B | ABB including Biology or Chemistry (preferably both) + GCSE Biology, Chemistry and Mathematics grade C or equivalent |
| Human Biology | BSc | 3 years | B | ABB including Biology or Chemistry (preferably both) + GCSE Biology, Chemistry and Mathematics grade C or equivalent |
| Engineering | | | | |
| Aerospace Engineering** | BEng | 3/4 years | C | BBC (Mathematics and at least one from Physics (preferred), Biology, Chemistry or Further Mathematics) + GCSE Physics grade C or equivalent |
| Aerospace Engineering** | MEng ^{†††} | 4/5 years | C | ABB (Mathematics and at least one from Physics (preferred), Biology, Chemistry or Further Mathematics) + GCSE Physics grade B or equivalent |
| Architecture | BSc | 3 years | B [#] | ABB plus evidence of artistic ability + GCSE Mathematics grade C or equivalent |
| Chemical Engineering** | MEng ^{††} | 4/5 years | C | ABB (Mathematics and at least one from Biology, Chemistry or Physics) + GCSE Chemistry and Physics grade B or equivalent |
| Chemical Engineering** | BEng | 3/4 years | C | B (Mathematics) BC (including at least one from Biology, Chemistry or Physics) + GCSE Chemistry and Physics grade C or equivalent |
| Civil Engineering** | BEng | 3/4 years | C | BBC (Mathematics and at least one from Biology, Chemistry or Physics) + GCSE Physics grade C or equivalent |
| Civil Engineering** | MEng ^{††} | 4/5 years | C | AB (Mathematics and at least one from Biology, Chemistry or Physics) B, and GCSE Physics grade B or equivalent |
| Electrical and Electronic Engineering** | BEng | 3/4 years | C | BBC (Mathematics and at least one from Physics (preferred), Biology, Chemistry or Further Mathematics) and GCSE Physics grade C or equivalent |
| Electrical and Electronic Engineering** | MEng ^{††} | 4/5 years | C | ABB (Mathematics and at least one from Physics (preferred), Biology, Chemistry or Further Mathematics) and GCSE Physics grade B or equivalent |
| Environmental and Civil Engineering** | MEng ^{††} | 4/5 years | C | AB (Mathematics and at least one from Biology, Chemistry or Physics) B, and GCSE Physics grade B or equivalent |
| Environmental Planning | BSc | 3 years | B | BBB + GCSE Mathematics grade C or equivalent |
| Mechanical Engineering** | BEng | 3/4 years | C | BBC (Mathematics and at least one from Physics (preferred), Biology, Chemistry or Further Mathematics) and GCSE Physics grade C or equivalent |
| Mechanical Engineering** | MEng ^{†††} | 4/5 years | C | ABB (Mathematics and at least one from Physics (preferred), Biology, Chemistry or Further Mathematics) and GCSE Physics grade B or equivalent |
| Product Design Engineering** | BEng | 3/4 years | C | BBC (Mathematics and at least one from Physics (preferred), Biology, Chemistry or Further Mathematics) or B (Mathematics) BC, and GCSE Physics grade C or equivalent |
| Product Design Engineering** | MEng ^{†††} | 4/5 years | C | ABB (Mathematics and at least one from Physics (preferred), Biology, Chemistry or Further Mathematics) and GCSE Physics grade B or equivalent |
| Software and Electronic Systems Engineering** | BEng | 3/4 years | C | BBC (Mathematics and at least one from Physics, Biology, Chemistry or Further Mathematics) and GCSE Physics grade C or equivalent |
| Software and Electronic Systems Engineering** | MEng ^{††} | 4/5 years | C | ABB (Mathematics and at least one from Physics, Biology, Chemistry or Further Mathematics) and GCSE Physics grade B or equivalent |
| Structural Engineering with Architecture** | MEng ^{††} | 4/5 years | C | AB (Mathematics and at least one from Biology, Chemistry or Physics) B, and GCSE Physics grade B or equivalent |
| Mathematics and Computing | | | | |
| Business Information Technology** | BSc | 3/4 years | B | BBB + GCSE Mathematics grade C or equivalent |
| Computing and Information Technology** | BSc | 3/4 years | C | BBC/BBB (depending on subjects offered) + GCSE Mathematics grade C or equivalent |
| Computer Science (Sandwich)** | BEng | 3/4 years | C | BBC including Mathematics or BBB including Physics or Chemistry + GCSE Mathematics grade C or equivalent |
| Computer Science (Sandwich)** | BSc | 3/4 years | C | BBC including Mathematics or BBB including Physics or Chemistry + GCSE Mathematics grade C or equivalent |
| Computer Science** | MEng ^{††} | 4/5 years | C | ABB including Mathematics or AAB including Physics or Chemistry + GCSE Mathematics grade C or equivalent |
| Mathematics | BSc | 3 years | C | A (Mathematics) BC |
| Mathematics | MSci | 4 years | C | A (Mathematics) AB |

Progression route for Engineering and Science pathway[†]

| Programme title | Degree | Length of study | EAP grade* | Grade profile for progression in 2015 |
|---|--------------------|-----------------|----------------|--|
| Mathematics and Computing <i>continued</i> | | | | |
| Mathematics with Finance | BSc | 3 years | C | A (Mathematics) AB |
| Software Engineering (Sandwich) | BEng | 4 years | C | BBC including Mathematics OR BBB including Physics or Chemistry + GCSE Mathematics grade C or equivalent |
| Software Engineering** | MEng ^{††} | 4/5 years | C | ABB including Mathematics OR AAB including Physics or Chemistry + GCSE Mathematics grade C or equivalent |
| Nursing and Midwifery | | | | |
| Midwifery Sciences [†] | BSc | 3 years | A [§] | CCC including Biology or Chemistry or Mathematics or Physics + 5 GCSE subjects at grade B or equivalent, including Mathematics and a Science subject (Chemistry, Physics or Biology) |
| Nursing (Adult) [†] | BSc | 3 years | A [§] | CCC including Biology or Chemistry or Mathematics or Physics + 5 GCSE subjects at grade C or equivalent, including Mathematics and a Science subject (Chemistry, Physics or Biology) - grade B preferred |
| Nursing (Children's) [†] | BSc | 3 years | A [§] | CCC including Biology or Chemistry or Mathematics or Physics + 5 GCSE subjects at grade C or equivalent, including Mathematics and a Science subject (Chemistry, Physics or Biology) - grade B preferred |
| Nursing (Learning Disability) [†] | BSc | 3 years | A [§] | CCC including Biology or Chemistry or Mathematics or Physics + 5 GCSE subjects at grade C or equivalent, including Mathematics and a Science subject (Chemistry, Physics or Biology) - grade B preferred |
| Nursing (Mental Health) [†] | BSc | 3 years | A [§] | CCC including Biology or Chemistry or Mathematics or Physics + 5 GCSE subjects at grade C or equivalent, including Mathematics and a Science subject (Chemistry, Physics or Biology) - grade B preferred |
| Science | | | | |
| Applied Mathematics and Physics | BSc | 3 years | C | A (Mathematics) B (Physics) C |
| Applied Mathematics and Physics | MSci | 4 years | C | A (Mathematics) AB (including Physics) |
| Archaeology | MSci | 4 years | B | AAB + GCSE Mathematics grade C or equivalent |
| Archaeology-Palaeoecology | BSc | 3 years | B | BBC + GCSE Mathematics grade C or equivalent |
| Biochemistry** | BSc | 3/4 years | B | BBB including Chemistry and at least one from Biology (preferred), Mathematics or Physics + GCSE Biology and Mathematics grade C or equivalent |
| Biological Sciences** | BSc | 3/4 years | B | BBB including Biology and preferably Chemistry + GCSE Chemistry and Mathematics grade C or equivalent |
| Chemistry** | BSc | 3/4 years | C | B (Chemistry) BC including a second Science subject + GCSE Mathematics grade C or equivalent |
| Chemistry ^{††} | MSci | 4 years | C | ABB including Chemistry and a second Science subject + GCSE Mathematics grade C or equivalent |
| Chemistry with Forensic Analysis | BSc | 3 years | C | B (Chemistry) BC including a second Science subject + GCSE Mathematics grade C or equivalent |
| Environmental Biology | BSc | 3 years | B | BBB including Biology and preferably Chemistry + GCSE Chemistry and Mathematics grade C or equivalent |
| Food Quality, Safety and Nutrition** | BSc | 3/4 years | B | BBB including Biology or Chemistry (preferably both) + GCSE Biology, Chemistry and Mathematics grade C or equivalent |
| Geography | BSc | 3 years | B | BBC + GCSE Mathematics grade C or equivalent |
| Land Use and Environmental Management** | BSc | 3/4 years | B | BBB + GCSE Mathematics grade C or equivalent |
| Marine Biology | BSc | 3 years | B | BBB including Biology and preferably Chemistry + GCSE Chemistry and Mathematics grade C or equivalent |
| Medicinal Chemistry** | BSc | 3/4 years | C | B (Chemistry) BC including a second Science subject + GCSE Mathematics grade C or equivalent |
| Medicinal Chemistry ^{††} | MSci | 4 years | C | ABB including Chemistry and a second Science subject + GCSE Mathematics grade C or equivalent |
| Microbiology** | BSc | 3/4 years | B | BBB including Biology and preferably Chemistry + GCSE Chemistry grade B + GCSE Mathematics grade C or equivalent |

Progression route for Engineering and Science pathway[†]

| Programme title | Degree | Length of study | EAP grade* | Grade profile for progression in 2015 |
|------------------------------------|--------|-----------------|----------------|---|
| <i>Science continued</i> | | | | |
| Pharmaceutical Sciences | BSc | 3 years | B [#] | BBB including Biology and Chemistry + GCSE Mathematics grade C or equivalent |
| Pharmacy | MPharm | 4 years | B [#] | AAB (Chemistry and two from Biology (preferred), Mathematics or Physics) + GCSE Biology and Mathematics grade C or equivalent |
| Physics | BSc | 3 years | C | BB (Mathematics and Physics) C |
| Physics | MSci | 4 years | C | AAB (Mathematics and Physics) |
| Physics with Astrophysics | BSc | 3 years | C | BB (Mathematics and Physics) C |
| Physics with Astrophysics | MSci | 4 years | C | AAB (Mathematics and Physics) |
| Physics with Financial Mathematics | BSc | 3 years | C | AAB (Mathematics and Physics) |
| Physics with Medical Applications | BSc | 3 years | C | BB (Mathematics and Physics) C |
| Physics with Medical Applications | MSci | 4 years | C | AAB (Mathematics and Physics) |
| Psychology | BSc | 3 years | B | BBB + GCSE Mathematics grade C or equivalent |
| Theoretical Physics | BSc | 3 years | C | A (Mathematics) B (Physics) C |
| Theoretical Physics | MSci | 4 years | C | A (Mathematics) AB (including Physics) |
| Zoology | BSc | 3 years | B | BBB including Biology and preferably Chemistry + GCSE Chemistry and Mathematics grade C or equivalent |

* For progression to Queen's University Belfast students must achieve a minimum of grade D in each component.

** Indicates courses which are offered with and without a Sandwich year option; or where a Sandwich year is normally a required element of the degree programme, but international students can be exempted from it. Students undertaking a year of professional experience (Sandwich year) do not need a work permit as long as the placement is in the UK. Students who do not take the year of professional experience are transferred to an equivalent programme without the extension 'with Professional Experience' in the title.

The MSci Chemistry and MSci Medicinal Chemistry are available with a Professional Studies option. The duration of each degree programme is four years, and incorporates an industrial placement and a distance learning element.

For progression to Queen's University Belfast students must achieve a minimum of grade C in each component.

For progression to Queen's University Belfast students must achieve a minimum of grade C in Speaking and Listening and grade D in Reading and Writing.

† For progression degrees that do not specify particular subject requirements for entry, suitably qualified students may choose to study either the International Foundation in Business, Humanities and Social Sciences or in Engineering and Science.

†† The Master's of Engineering (MEng) is a flagship programme and, as such, students must maintain a high standard throughout their degree. At the end of Year 2 students entering an MEng programme must have obtained a minimum average of 55%. Students who fail to achieve this grade may/will be required to transfer to a Bachelor of Engineering (BEng) programme. Similarly, a BEng student with a 55% average or better may transfer to an MEng programme at the end of Year 2. Students enrolled on the MEng will need to pass all of their modules and maintain a high standard in Years 3 and 4 to graduate from the programme.

††† The Master's of Engineering (MEng) is a flagship programme and as such, students must maintain a high standard throughout their degree. At the end of Year 1, students entering an MEng programme must have obtained a minimum average of 60%, with passes in all Stage 1 modules, and 60% in specified analytical modules. Students who fail to achieve this grade will be required to transfer to a Bachelor of Engineering (BEng) programme. Similarly, a BEng student with a 60% average or better with passes in all Stage 1 modules and an average of 60% in analytical modules, may be considered for transfer to an MEng programme at the end of Year 1. Students enrolled on the MEng will need to pass all of their modules and maintain a high standard in Years 2, 3 and 4 to graduate from the programme.

‡ Progression to Midwifery Sciences and Nursing cannot be guaranteed. Progression will depend on the availability of placements and will be based on the normal selection criteria used by the School of Nursing and Midwifery. All applicants are required to have an overall EAP grade A, with grade A in each test component.

§ For progression to Queen's University Belfast students must achieve grade A in each component.

Module descriptions

Detailed descriptions of the core and specialist modules for the International Foundation pathways are set out below.

English Language and Study Skills

This module is designed to help you develop your independent study skills and confidence in academic English in preparation for university study and develop the four key areas of competence – reading, writing, listening and speaking, with a particular emphasis on high-level academic writing skills.

The module material is integrated with the material you will study in your subject modules. You will learn techniques for listening to lectures, taking notes, delivering presentations, summarising and paraphrasing. You will be introduced to a variety of academic writing modes and learn about academic conventions such as referencing.

Foundation Biology*

In this module you will develop your understanding of biological structures and processes and consider different levels of organisation in living systems from sub-cellular to cellular to organism and systems level. Life processes are studied to show fundamental similarities between living things and you will study topics such as: cellular structure and energy generation; classification; reproduction and development of living organisms; DNA replication and cell division; molecular genetics and the genetics of inheritance; evolution; human physiology; plant biology and ecology and diversity.

Foundation Business Studies

This module is designed to provide you with a basic understanding of the key features of business and management and the standard conduct of business in the UK. You will study models of management and the external environment in which UK businesses operate and will be introduced to a range of key concepts in areas such as marketing, leadership, organisation structure, accounting and finance, human resource management and corporate strategy.

Foundation Chemistry*

This module assumes a basic background in chemistry and is designed to develop your understanding of chemical principles and processes required for studying at degree level in the physical sciences, engineering or biological sciences. You will develop an understanding of the concepts of physical, inorganic and organic chemistry and study topics such as: basic atomic and molecular structure; classification of organic compounds and their reactions; energy; enthalpy and dynamic equilibria; reaction kinetics; the properties of gases and liquids; and the impact of chemistry on society, the economy and the environment.

Foundation Economics

In this module you will learn about the main theoretical models and concepts used in macro and microeconomics and their application in the study of 'real world' economic situations. You will develop an ability to think like an economist and become familiar with the use of diagrams to convey economic concepts. The topics you will study include: the economic environment; the market mechanism; market structure and competition; growth; inflation; unemployment; international trade and macroeconomic policy.

Foundation Mathematics for Business, Humanities and Social Sciences

This module introduces a range of mathematical and statistical techniques that have broad application in business, humanities and social science disciplines. You will study key mathematical concepts and notations, learn to manipulate numerical and algebraic expressions and be introduced to the basic techniques of statistics, probability and set theory. You will also study topics in differential and integral calculus, trigonometry, correlation, linear regression and time series analysis. By the end of the module, you will be adept at handling, summarising, representing and interpreting data relevant to the fields of business, humanities and the social sciences.

Foundation Mathematics for Engineering and Science

Mathematics provides the means to describe and analyse the principles that underpin most natural and man-made processes, in particular those processes studied by scientists, engineers and parts of the business community. This module assumes an elementary background in mathematical concepts and skills and introduces you to some of the important mathematical concepts and tools used in science and engineering. You will cover topics such as: linear equations and matrices; quadratic equations; expansions, sequences and series; indices; functions and transformations; differential and integral calculus; trigonometric identities; vectors; numerical methods and an introduction to statistics.

* The module includes laboratory and project work designed to complement your theoretical studies.

Foundation Physics*

Building on your existing knowledge of physics, this module will provide an introduction to the fundamental concepts and mathematics of physical science that are required for studying the physical sciences and engineering courses at degree level. You will study topics in mechanics, materials, structures, electrical and electromagnetic fields and develop an understanding of the interrelationship between atomic structure and the properties of matter and how to apply these concepts to the analysis of mechanical, electrical and thermal problems.

Foundation Politics and International Relations

This module is designed to help you develop a critical awareness of the relationships and interactions between nation states and the function, operation and evolution of transnational organisations such as the United Nations, the European Union and the World Trade Organisation. The module will provide a historical context and introduce you to theories of world politics. It will explore processes and concepts such as international political economy, global security, the environment and culture in world affairs.

Further Mathematics for Engineering and Science

This module provides a deeper understanding and stronger background in areas of mathematics required in engineering and some science-based disciplines. You will study a range of topics which complement and extend those studied in the Foundation Mathematics module including: coordinate geometry; exponentials; further differential and integral calculus; complex numbers; statistics and probability theory. The application of mathematical concepts and models to problems in engineering and science will be emphasised throughout the module.



2010
Arrived at INTO Queen's University Belfast

2012
Completed International Foundation

2012
Progressed to Pharmacy at Queen's University Belfast

"Studying at INTO prior to university made me feel more confident entering the University, knowing that I had acquired the skills already rather than developing them during my degree."

Candies Sutanto, Indonesia

International Diploma

The International Diploma is equivalent to year one of an undergraduate degree at a UK university. Successful completion offers direct entry to the second year of an undergraduate degree in a wide range of fields at Queen’s University Belfast. The International Diploma in Engineering is also recognised by other leading UK universities.

What is the International Diploma?

The International Diploma is a full-time academic programme that offers you the opportunity to:

- improve your language skills in preparation for undergraduate study
- increase your knowledge of academic theory to enable advanced entry to year two of an undergraduate degree
- develop the necessary study and research skills for undergraduate study.

What is special about the programme?

- Full university status.
- A campus-based programme with access to world-class university support and facilities.
- University-style teaching.
- High contact hours and small class sizes.
- Experienced and well-qualified teachers.
- A conditional offer of a place on a relevant undergraduate degree at Queen’s University Belfast.
- Professional support and help with university applications.
- Multiple start dates.
- The highest levels of pastoral care and support.

What if I do not meet the minimum English language requirements?

Lasting four or five terms, the Extended Diploma incorporates one or two terms of intensive English language tuition at the beginning of the course, allowing you to begin your course and improve your English to a level appropriate for academic study. You will be required to pass the initial English language component before progressing to the next stage of the programme. Examples of these combined programmes are set out in the diagram below.

If you need to study more than two terms of English in order to reach the level necessary for academic study, you should apply for English for University Study. See page 60 for course details.

How is the programme validated?

The International Diploma is accredited and quality-assured by Queen’s University Belfast. Successful completion leads to the award of Queen’s University Belfast International Diploma and is equivalent to the University’s Certificate of Higher Education: Level 4 on the National Qualification Framework (NQF), which is welcomed as an entry qualification at Queen’s University Belfast.

The International Diploma in Engineering is designed and validated by NCUK and recognised by Queen’s University Belfast.

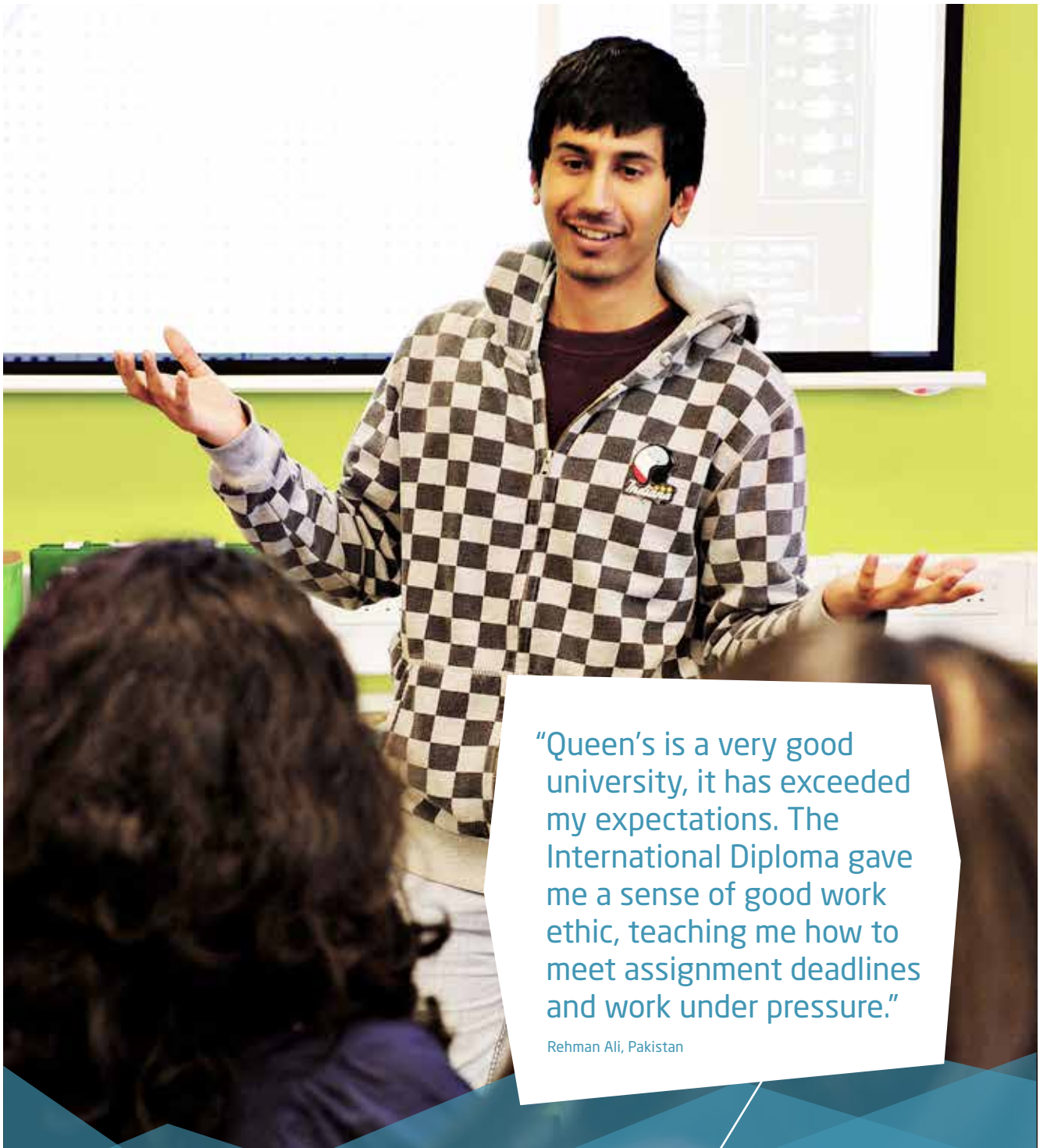
Academic guidance

You will receive support from your tutor on personal and academic issues, including advice on your studies and career plans. We also have an International Progression Officer who will help with your application to Queen’s University Belfast and arrange visits to your academic School, so that you can learn more about your chosen degree programme.

Recommended study plan and progression route

| 2015 | | | | | | | | | | | | 2016 | | | | | | | | | | | | 2017 | | | | |
|---|-----|-----|-----|---|-----|---|-----|-----|--------------------------------------|-----|-----|------|-----|-----------------------------|-----------------------------|-----------------------------|-----|-----|-----|-----|-----|-----|-----|------|-----|--|--|--|
| APR | MAY | JUN | JUL | AUG | SEP | OCT | NOV | DEC | JAN | FEB | MAR | APR | MAY | JUN | JUL | AUG | SEP | OCT | NOV | DEC | JAN | FEB | MAR | APR | MAY | | | |
| IELTS 4.5 Extended Diploma programme (5 term) | | | | | | | | | | | | | | | Undergraduate degree Year 2 | | | | | | | | | | | | | |
| IELTS 4.0 EUS | | | | IELTS 4.5 Extended Diploma programme (5 term) | | | | | | | | | | | Undergraduate degree Year 2 | | | | | | | | | | | | | |
| IELTS 4.5 EUS | | | | IELTS 5.0 Extended Diploma programme (4 term) | | | | | | | | | | | Undergraduate degree Year 2 | | | | | | | | | | | | | |
| | | | | IELTS 4.5 EUS | | IELTS 5.0 Extended Diploma programme (4 term) | | | | | | | | | | Undergraduate degree Year 2 | | | | | | | | | | | | |
| | | | | IELTS 5.0 EUS | | IELTS 5.5 Diploma programme (3 term) | | | | | | | | Undergraduate degree Year 2 | | | | | | | | | | | | | | |
| | | | | IELTS 5.0 EUS | | | | | IELTS 5.5 Diploma programme (3 term) | | | | | | Undergraduate degree Year 2 | | | | | | | | | | | | | |

EUS: English for University Study



“Queen’s is a very good university, it has exceeded my expectations. The International Diploma gave me a sense of good work ethic, teaching me how to meet assignment deadlines and work under pressure.”

Rehman Ali, Pakistan

2011

Arrived at INTO Queen’s University Belfast



2013

Completed International Diploma

2014

Progressed to Engineering at Queen’s University Belfast

International Diploma Engineering

The programme provides subject-specific modules that relate to the academic content of your chosen degree. You will study a combination of core and specialist modules with a total value of 120 credits. Individual routes within the International Diploma stipulate specific modules, which you must study before being permitted to progress onto your chosen degree.

Key course facts

Start dates

April, June, September and January

Programme length

3 terms or approximately 9 months
4 terms or approximately 12 months
5 terms or approximately 15 months

Class hours

Normally between 20 and 24 hours per week

Age requirement

Applicants will normally be 18 years old at the start of the International Diploma. Students who are aged 17 at the start of the course may apply but will need prior approval from the Centre.

Academic entry requirements

Two 'D' grades from a UK A-level board, a recognised foundation, first year of an overseas university degree programme or equivalent with good grades.

English language entry requirement

3 term: IELTS 5.5 or equivalent
4 term: IELTS 5.0 or equivalent
5 term: IELTS 4.5 or equivalent

The Centre accepts other Secure English Language Tests (SELT) including Pearson PTE.

For visa purposes, students requiring a Tier 4 visa must have IELTS 4.0 (with a minimum of IELTS 4.0 in all subskills) or equivalent.

If you do not meet the minimum English language requirement you should apply for English for University Study. See page 60 for further details.

For further guidance please check with the INTO Admissions Office or your local education counsellor.

Pathway in Civil Engineering (120 credits)

| Core modules | Specialist modules |
|--|--|
| English for Academic Purposes | Semester 1 |
| Engineering Mathematics 1 (12 credits) | Drawing and Design (12 credits) |
| Engineering Mathematics 2 (12 credits) | Fluid Mechanics (12 credits) |
| | Geotechnics (12 credits) |
| | Mechanical Principles (12 credits) |
| | Semester 2 |
| | Civil Engineering Materials (12 credits) |
| | Surveying (12 credits) |
| | Materials and Manufacture (12 credits) |
| | Mechanics of Materials and Structures (12 credits) |

See pages 48 and 49 for descriptions of core and specialist modules for this pathway.

Leading to an undergraduate degree in areas such as:

BEng/MEng Civil Engineering.

Pathway in Electrical and Electronic Engineering (120 credits)

| Core modules | Specialist modules |
|--|--|
| English for Academic Purposes | Semester 1 |
| Engineering Mathematics 1 (12 credits) | Circuit Principles 1 (12 credits) |
| Engineering Mathematics 2 (12 credits) | Electronic Engineering Materials (12 credits) |
| | Engineering Applications, Practice and Design (12 credits) |
| | Introduction to Computer Programming (12 credits) |
| | Semester 2 |
| | Analogue Electronics (12 credits) |
| | Circuit Principles 2 (12 credits) |
| | Digital System Design (12 credits) |
| | Energy Transport and Conversion (12 credits) |

See pages 48 and 49 for descriptions of core and specialist modules for this pathway.

Leading to an undergraduate degree in areas such as:

BEng/MEng Computer Science, BSc Computing and Information Technology, BEng/MEng Electrical and Electronic Engineering, BEng/MEng Software Engineering, BEng/MEng Software and Electronic Systems Engineering.

Pathway in Mechanical and Manufacturing Engineering (120 credits)

| Core modules | Specialist modules |
|--|--|
| English for Academic Purposes | Semester 1 |
| Engineering Mathematics 1 (12 credits) | Drawing and Design (12 credits) |
| Engineering Mathematics 2 (12 credits) | Electrical and Electronic Engineering (12 credits) |
| | Fluid Mechanics (12 credits) |
| | Mechanical Principles (12 credits) |
| | Semester 2 |
| | Dynamics (12 credits) |
| | Materials and Manufacture (12 credits) |
| | Mechanics of Materials and Structures (12 credits) |
| | Thermodynamics (12 credits) |

See pages 48 and 49 for descriptions of core and specialist modules for this pathway.

Leading to an undergraduate degree in areas such as:

BEng/MEng Aerospace Engineering, BEng/MEng Mechanical Engineering.

English language support

English language is a core subject in the International Diploma programme, covering reading, writing, listening and speaking. The module ensures that you reach the entry requirement for the second year of a degree course.

This module is compulsory if you are unable to demonstrate English language proficiency of at least EAP grade C or equivalent.

Progression to Queen's University Belfast

In order to progress to year two of your chosen engineering degree programme at Queen's University Belfast, you will need to achieve a Pass with Credit with a minimum average of 60% across all 10 modules, with a minimum of 40% in nine out of 10 specified modules. In addition, you will need to achieve an overall EAP grade of at least C, with no less than grade D in each component (only compulsory for students unable to demonstrate English language proficiency of at least EAP grade C, with no less than D in each component).

In order to progress to year two of an MEng programme you will need to achieve a Pass with Distinction with a minimum average of 70% across all 10 modules, with no module mark being less than 50%. In addition you will need to achieve an overall EAP/Key Skills grade of at least grade C, with no less than grade D in each component.

Students who successfully complete the programme are also eligible to progress to an NCUK university.

"I found the International Diploma challenging but manageable. It prepared me well for my second year at university. My teachers were patient and understanding, and this made it easy to approach them if I didn't understand anything."

Hoi Hin Kwan, Hong Kong



For course dates
and prices, see
page 74

Progression route for Engineering pathway

| Programme title | Degree | English grade | IELTS equivalency | Academic requirements for progression in 2015 |
|---|--------|---|---|---|
| International Diploma in Engineering | | | | |
| Aerospace Engineering | BEng | Grade C with a minimum of grade D in each component | IELTS 6.0 with a minimum of 5.5 in each component | A pass with Credit with a minimum average of 60% and passes in at least 9 out of 10 modules** |
| Aerospace Engineering | MEng | Grade C with a minimum of grade D in each component | IELTS 6.0 with a minimum of 5.5 in each component | A pass with Distinction with a minimum average of 70% and passes in all 10 modules |
| Civil Engineering | BEng | Grade C with a minimum of grade D in each component | IELTS 6.0 with a minimum of 5.5 in each component | A pass with Credit with a minimum average of 60% and passes in at least 9 out of 10 modules [§] |
| Civil Engineering | MEng | Grade C with a minimum of grade D in each component | IELTS 6.0 with a minimum of 5.5 in each component | A pass with Distinction with a minimum average of 70% and passes in all 10 modules [§] |
| Computer Science [†] | BEng | Grade C with a minimum of grade D in each component | IELTS 6.0 with a minimum of 5.5 in each component | A pass with Credit with a minimum average of 60% and passes in at least 9 out of 10 modules ^{††} |
| Computer Science | MEng | Grade C with a minimum of grade D in each component | IELTS 6.0 with a minimum of 5.5 in each component | A pass with Distinction with a minimum average of 70% and passes in all 10 modules |
| Computing and Information Technology [†] | BSc | Grade C with a minimum of grade D in each component | IELTS 6.0 with a minimum of 5.5 in each component | A pass with Credit with a minimum average of 60% and passes in at least 9 out of 10 modules ^{††} |
| Electrical and Electronic Engineering | BEng | Grade C with a minimum of grade D in each component | IELTS 6.0 with a minimum of 5.5 in each component | A pass with Credit with a minimum average of 60% and passes in at least 9 out of 10 modules ^{††} |
| Electrical and Electronic Engineering | MEng | Grade C with a minimum of grade D in each component | IELTS 6.0 with a minimum of 5.5 in each component | A pass with Distinction with a minimum average of 70% and passes in all 10 modules |
| Mechanical Engineering | BEng | Grade C with a minimum of grade D in each component | IELTS 6.0 with a minimum of 5.5 in each component | A pass with Credit with a minimum average of 60% and passes in at least 9 out of 10 modules** |
| Mechanical Engineering | MEng | Grade C with a minimum of grade D in each component | IELTS 6.0 with a minimum of 5.5 in each component | A pass with Distinction with a minimum average of 70% and passes in all 10 modules |
| Product Design Engineering | BEng | Grade C with a minimum of grade D in each component | IELTS 6.0 with a minimum of 5.5 in each component | A pass with Credit with a minimum average of 60% and passes in at least 9 out of 10 modules** |
| Product Design Engineering | MEng | Grade C with a minimum of grade D in each component | IELTS 6.0 with a minimum of 5.5 in each component | A pass with Distinction with a minimum average of 70% and passes in all 10 modules |
| Software Engineering [†] | BEng | Grade C with a minimum of grade D in each component | IELTS 6.0 with a minimum of 5.5 in each component | A pass with Credit with a minimum average of 60% and passes in at least 9 out of 10 modules ^{††} |
| Software Engineering | MEng | Grade C with a minimum of grade D in each component | IELTS 6.0 with a minimum of 5.5 in each component | A pass with Distinction with a minimum average of 70% and passes in all 10 modules |
| Software and Electronic Systems Engineering | BEng | Grade C with a minimum of grade D in each component | IELTS 6.0 with a minimum of 5.5 in each component | A pass with Credit with a minimum average of 60% and passes in at least 9 out of 10 modules ^{††} |
| Software and Electronic Systems Engineering | MEng | Grade C with a minimum of grade D in each component | IELTS 6.0 with a minimum of 5.5 in each component | A pass with Distinction with a minimum average of 70% and passes in all 10 modules |

* Programmes are normally offered with and without a Sandwich year option. Students undertaking a year of professional experience (Sandwich year) do not need a work permit as long as the placement is in the UK.

** Passes are required in the following modules: Engineering Mathematics 1 and 2, Mechanics of Materials and Structures, Mechanical Principles, Dynamics, Thermodynamics, Fluid Mechanics, Materials and Manufacture

† Indicates courses where a Sandwich year is normally a required element of the degree programme, but international students can be exempt from it. Students who do not take the year of professional experience are transferred to an equivalent programme without the extension 'with Professional Experience' in the title.

†† Passes are required in the following modules: Engineering Mathematics 1 and 2, Introduction to Computer Programming

§ In addition to the general progression criteria performance may be required in specific modules. Please contact the Centre for details.



"I'm glad I studied the International Diploma because it's helped me to meet friends and settle in Belfast. I'm focusing on securing a placement year with an engineering company in Northern Ireland which is really exciting."

Febry Fajarmico Wikaksomo, Indonesia

2011
Arrived at INTO Queen's University Belfast

2012
Completed International Diploma

2014
Progressed to Software and Electronic Systems Engineering at Queen's University Belfast

Module descriptions

Detailed descriptions of the core and specialist modules for the International Diploma in Engineering are set out below.

Analogue Electronics

This module explains the operation and use of simple analogue components such as diodes and transistors and provides you with the knowledge and ability to design and analyse simple non-linear circuits using these components. By the end of the module you will be able to explain the concept of biasing and the use of small signal circuit models for transistors and analyse and design single-transistor amplifier and simple op amp circuits.

Circuit Principles 1

The module introduces the concept of simple circuit elements in electrical and electronic systems, with DC and transient (step) excitation. By the end of the module, you should be able to explain the various parameters and concepts on which circuits are based, recall the relationships between the parameters and carry out calculations involved in circuit design.

Circuit Principles 2

The module builds on the work done in Circuit Principles 1 and provides an introduction to electrical and electronic systems excited by sine wave AC. By the end of the module, you should be able to explain and use the concepts with which AC circuits are analysed and explain the various parameters on which these circuits are based.

Civil Engineering Materials

The aim of this module is to provide students with basic understanding of states of stress and strain and of the mechanical behaviour of materials. You will learn about constituents, properties and behaviour of a range of civil engineering materials such as concrete, steel and timber.

Digital System Design

This module introduces the principles of digital logic, combinatorial and sequential circuit design and digital system implementation. By the end of the module, you should be able to understand the principles of digital logic, design combinatorial and sequential circuits and implement digital circuits using logic gates and programmable logic devices.

Drawing and Design

In this module you will be introduced to the design process and learn to apply the principles of good design to the creation of appropriate artefacts in simple design exercises. You will learn how to draw engineering diagrams following standard conventions, use a computer-aided design (CAD) system to develop engineering drawings of components and assemblies and derive information from engineering drawings.

Dynamics

The aim of the module is to introduce you to the theory and principles of dynamics and their application to engineering mechanics. By the end of the module, you should be able to recall and apply Newton's laws of motion, use mathematical models to analyse the behaviour of simple mechanical systems and use the theory and principles of dynamics to carry out simple calculations.

Electrical and Electronic Engineering

The module introduces the fundamental concepts of Electrical and Electronic Engineering and explains the operation of simple circuit elements and components in electrical and electronic systems. By the end of the module you will be able to understand and apply mathematical, scientific and engineering principles and tools to the analysis, synthesis, performance assessment, critical appraisal and evaluation of electrical and electronic engineering processes and systems.

Electronic Engineering Materials

The module introduces the properties of the most important materials used in electronic and electrical engineering. By the end of the module, you should be able to describe the basic structure and operation of common semiconductor materials, insulators and dielectric materials, and magnetic materials.

Energy Transport and Conversion

The module provides an introduction to the mechanisms used in electrical engineering to transform mechanical energy into electrical energy and the transmission of electrical energy over the power system to the point of utilisation. By the end of the module, you should be able to describe the methods by which mechanical energy is converted to electrical energy and vice versa and the methods by which electrical energy is transmitted over a power system to those using the energy.

Engineering Applications, Practice and Design

In this module you will be introduced to the product development life cycle and the use of project management tools and techniques in the development of engineering artefacts. You will apply experimental methods, construct and test circuits using prototyping techniques, computer-aided design (CAD) and simulation software packages and understand the importance of clear documentation and communication, health and safety guidelines, copyright laws and ethics applied to the use of IT systems.

English for Academic Purposes

An English for Academic Purposes (EAP) module is offered as part of the study in the International Diploma in Engineering. This module will be compulsory for students unable to demonstrate English language proficiency of at least NCUK EAP grade C and a D in each component or equivalent and will be optional for all other students. The EAP module does not contribute academic credit towards the International Diploma in Engineering programme.

Engineering Mathematics 1

Mathematics is a fundamental discipline underpinning many areas of engineering. The purpose of these modules is to provide you with a sound basis in engineering-related mathematics such that you can deal with the wide range of modules that involve analytical methods.

In Engineering Mathematics 1, you will learn how to approach problems and construct models involving differentiation and integration, including differential equations. You will develop the skills to interpret the models and offer practical solutions and learn how to use determinants to help analyse and solve problems.

Engineering Mathematics 2

In Engineering Mathematics 2, you will learn how to approach problems involving matrices and the associated algebra including the use of Eigenvalues and Eigenvectors to help analyse and solve problems. You will learn how to construct differential equations and use a variety of methods including Laplace transforms to solve the equations.

Fluid Mechanics

The module provides an introduction to the principles of fluid mechanics and their relevance in the field of engineering. By the end of the module, you should be able to understand the basic properties of fluids and their mechanics under static and dynamic conditions and apply the principles of conservation of mass, momentum and energy in engineering applications.

Geotechnics

The aim of this module is to introduce students to soil mechanics and its relevance to civil engineering operations and applications. You will learn about the different types of soil, the formation and the classifications. The course will also cover consolidation problems and how to calculate factors of safety for foundations.

Introduction to Computer Programming

The module introduces computer programming concepts and practical skills. By the end of the module, you should have an understanding of the basics of C++ programming and know how to create, compile and run programs. You should know about data types, strings and pointers and how to utilise the various mathematical operators and standard libraries' functions.

Materials and Manufacture

This module introduces the basic properties of materials used in Mechanical Engineering. By the end of the module you will be able to identify the basic properties of materials for a particular component and reasons for selection of that material, recognise the basic principles of selecting manufacturing processes for a particular component, explain material characteristics and properties and relate them to performance, manufacturing process and the environment.

Mechanical Principles

This module provides you with the theoretical and practical knowledge necessary to analyse the behaviour of simple mechanical systems subjected to the action of various forces and to determine the effects of loading in a range of static engineering systems.

Mechanics of Materials and Structures

This module covers mathematical models to analyse the behaviour of simple mechanical systems. You will be able to use the theory and principles of statics to carry out simple calculations, describe the fundamentals of stress analysis and their applications in engineering and solve problems involving stresses and strains in engineering materials. You will have the ability to predict the strength of a basic structural system and apply appropriate material and sections to a basic structural system in order to render the structure safe to operate.

Surveying

The aim of this module is to provide students with the skills and techniques required to produce large-scale plans of engineering sites. You will use surveying instruments and work in groups to produce a contoured plan of an area. You will learn about levelling and its applications, theodolites, traverse, stadia and contouring.

Thermodynamics

This module provides an elementary introduction to thermodynamics, including a discussion of the fundamental concepts of heat, work, energy and entropy. The module introduces the properties of different working fluids (vapours and gases) and also provides the necessary analytical skills to address practical and theoretical issues arising from the analysis of thermodynamic machinery.

International Diploma Management and Finance

The programme provides subject-specific modules that relate to the academic content of your chosen degree. You will study a combination of core and specialist modules with a total value of 120 credits. Individual routes within the International Diploma stipulate specific modules, which you must study before being permitted to progress onto your chosen degree.

Pathway in Management and Finance (120 credits)

| Core modules | Specialist modules |
|--|---|
| English Language and Study Skills (20 credits) | Mathematics for Finance and Economics (10 credits)* |
| Financial Institutions and Markets (20 credits) | OR |
| Introduction to Financial and Management Accounting (10 credits) | The Business Environment (10 credits)** |
| Mathematics and Statistics for Business (20 credits) | |
| Management and Organisations: Theory and Practice (20 credits) | |
| Principles of Economics (20 credits) | |

See page 52 for descriptions of core and specialist modules for this pathway.

* This module is compulsory for students intending to progress to degrees in Finance and Economics.

** This module is compulsory for students intending to progress to degrees in Business.

Key course facts

Start dates

April, June, September and January

Programme length

3 terms or approximately 9 months
4 terms or approximately 12 months
5 terms or approximately 15 months

Class hours

Normally between 20 and 24 hours per week

Age requirement

Applicants will normally be 18 years old at the start of the International Diploma. Students who are aged 17 at the start of the course may apply but will need prior approval from the Centre.

Academic entry requirements

Two 'D' grades from a UK A-level board, a recognised foundation, first year of an overseas university degree programme or equivalent with good grades.

English language entry requirement

3 term: IELTS 5.5 (with a minimum of 5.5 in reading and writing and no other subskill below 5.0) or equivalent

4 term: IELTS 5.0 (with a minimum of 5.0 in reading and writing and no other subskill below 4.5) or equivalent

5 term: IELTS 4.5 (with a minimum of 4.5 in all subskills) or equivalent

The Centre accepts other Secure English Language Tests (SELT) including Pearson PTE.

If you do not meet the minimum English language requirement you should apply for English for University Study. See page 60 for further details.

For further guidance please check with the INTO Admissions Office or your local education counsellor.



For course dates
and prices, see
page 74

Progression to Queen's University Belfast

If you successfully complete the International Diploma in Management and Finance, you are guaranteed entry to the second year of five undergraduate degree programmes offered by Queen's University Management School (subject to meeting the specified course requirements detailed in the table below).

If you successfully complete the International Diploma in Management and Finance, but do not meet the specified progression requirements for entry to year two, you will be considered for entry to year one of a suitable degree programme in Queen's University Management School.

Progression route for Management and Finance pathway

| Programme title | Degree | English grade | IELTS equivalency | Academic requirements for progression in 2015 |
|--|--------|---|---|--|
| International Diploma in Management and Finance | | | | |
| Business Economics | BSc | Grade B with a minimum of grade D in each component | IELTS 6.5 with a minimum of 5.5 in each component | 50% overall average in academic modules. A minimum of 50% in Principles of Economics; Management and Organisation: Theory and Practice; and The Business Environment |
| Business Management | BSc | Grade B with a minimum of grade D in each component | IELTS 6.5 with a minimum of 5.5 in each component | 50% overall average in academic modules. A minimum of 50% in Principles of Economics; Management and Organisation: Theory and Practice; and The Business Environment |
| Economics | BSc | Grade B with a minimum of grade D in each component | IELTS 6.5 with a minimum of 5.5 in each component | 50% overall average in academic modules. A minimum of 50% in Principles of Economics; Financial Institutions and Markets; and Mathematics for Finance and Economics |
| Economics with Finance | BSc | Grade B with a minimum of grade D in each component | IELTS 6.5 with a minimum of 5.5 in each component | 50% overall average in academic modules. A minimum of 50% in Principles of Economics; Financial Institutions and Markets; and Mathematics for Finance and Economics |
| Finance | BSc | Grade B with a minimum of grade D in each component | IELTS 6.5 with a minimum of 5.5 in each component | 50% overall average in academic modules. A minimum of 50% in Principles of Economics; Financial Institutions and Markets; and Mathematics for Finance and Economics |

Module descriptions

Detailed descriptions of the core and specialist modules for the International Diploma in Management and Finance are set out below.

The Business Environment (Business routes)

This module is specifically designed for students intending to progress to degree programmes in Business Management. It emphasises the increasing complexity and interdependence of the world economy and introduces students to key factors in the external environment (PESTLE) in which modern organisations operate. The aim is to reflect on the continuous need for national and international organisations to scan their external environment for opportunities and threats facing their business.

English Language and Study Skills

This module will give you the language proficiency and academic study skills you will need to embark on the second year of an undergraduate course in a British university. Language and study skills are incorporated into all aspects of the International Diploma programme and this module is designed to support the academic modules.

Financial Institutions and Markets

This module is designed to provide you with an understanding of the economic functions and workings of financial institutions and markets and of the financial intermediation process. You will study topics such as the theory of money, monetary union, the theory of financial intermediation, the structure and operation of the Central Bank, banking regulation, other non-bank financial intermediaries and an introduction to the stock, bond and money markets.

Mathematics and Statistics for Business

In this module you will learn to apply mathematical and statistical methods to business data and gain knowledge and understanding of the basic tools used to solve a range of practical problems in business. You will study basic project planning techniques using network analysis and consider a number of mathematical and statistical concepts including linear and non-linear functions, single variable calculus, data presentation, descriptive and inferential statistics, regression analysis, time series and elementary probability theory.

Introduction to Financial and Management Accounting

This module provides a foundation in the theory and practice of financial and management accounting. You will be introduced to the main accounting statements: The Income Statement, The Statement of Financial Position and The Statement of Cash Flows. You will learn how to carry out a basic analysis of these financial statements and how to write financial reports. The module also includes an introduction to the use of management accounting information for decision-making.

Management and Organisation: Theory and Practice

This module will introduce you to the study of management and organisation theory. It has been designed to provide you with an understanding of the historical foundations of management thought and of the functions of management in the modern work environment. The module will also introduce the concept of organisation behaviour and will consider a range of interrelated and interdependent topics including individual differences, group behaviour, organisational culture, structure, motivation and leadership.

Principles of Economics

This introductory economics module is designed to provide you with an understanding of fundamental economic theory and equip you with a real understanding of the role of economics in business, public and private decision-making. You will be taught how to apply the theory to analysis of the real world, gain an understanding of the functioning of markets as the foundation of the contemporary global economy and study the relationship between the main microeconomic principles and essential macroeconomic concepts.

Mathematics for Finance and Economics

This module is specifically designed for students intending to progress to degree programmes in finance and economics. The material will complement and build upon that covered in the Mathematics and Statistics for Business module and will include topics on matrix algebra, further differential and integral calculus and unconstrained and constrained optimisations. The course is taught with emphasis on the application of the mathematical techniques to solve real world problems in finance and economics.



"I've enjoyed my time studying here, the staff working at INTO Queen's are very friendly and helpful and everyone is easy to get along with."

James Mark Ryan, Singapore



2012
Arrived at INTO Queen's University Belfast

2013
Completed International Diploma

2014
Progressed to Economics at Queen's University Belfast

Graduate Diploma

The Graduate Diploma is a full-time academic programme that prepares you for direct entry to selected Master’s courses at Queen’s University Belfast. We offer two pathways: Finance and Management.

What is the Graduate Diploma?

The Graduate Diploma will give you the opportunity to:

- improve your language skills in preparation for postgraduate study
- increase your knowledge of academic theory and improve your understanding of key academic subjects
- develop the necessary research skills for postgraduate study
- gain an understanding of the UK education system.

What is special about the programme?

- A quality-assured, university-accredited programme.
- Full university status.
- A campus-based programme with access to world-class university support and facilities.
- University-style teaching supported by extensive e-learning provision.
- High contact hours and small class sizes.
- Experienced and well-qualified teachers.
- A conditional offer of a place on a designated Master’s at Queen’s University Belfast.
- Regular assessment to monitor your progress.
- Professional help and support with your application to university.
- The highest levels of pastoral care and support.

What if I do not meet the minimum English language requirements?

If you meet the programme’s academic requirements, but do not meet the minimum English language requirements, you can undertake the Graduate Diploma with Pre-sessional English, which includes a term of English language preparation before entering the Graduate Diploma. Examples of these study routes are set out in the diagram below.

How is the programme validated?

The Graduate Diploma is validated and quality assured by Queen’s University Belfast. Successful completion of the Graduate Diploma leads to the award of the Queen’s University Belfast Graduate Diploma which is equivalent to the University’s Certificate of Higher Education; Level 6 on the National Qualification Framework (NQF).

Academic guidance

You will receive support from your tutor on personal and academic issues, including advice on your studies and career plans. We also have an International Progression Officer who will help with your application to Queen’s University Belfast and arrange visits to your academic School, so that you can learn more about your chosen degree programme.

“The Graduate Diploma programme supplied me with all the basics I needed to cope with my Master’s. My experience studying at Queen’s has been really good, I am very happy and proud of being a Queen’s student.”

Aye Pyae Nyein, Myanmar

Recommended study plan and progression route

| 2015 | | | | | | | | | | | | 2016 | | | | | | | | | | | | 2017 | | | | | | |
|------|-----|-----|--|-----|---|--|-----|-----|---|-----|-----|------|-----|-----|-----|-----|-----------------|-----|-----------------|-----------------|-----|-----|-----------------|------|-----|--|--|--|--|--|
| APR | MAY | JUN | JUL | AUG | SEP | OCT | NOV | DEC | JAN | FEB | MAR | APR | MAY | JUN | JUL | AUG | SEP | OCT | NOV | DEC | JAN | FEB | MAR | APR | MAY | | | | | |
| | | | IELTS 5.0 Graduate Diploma with Pre-sessional English programme (4 term) | | | | | | | | | | | | | | Master’s degree | | | | | | | | | | | | | |
| | | | | | | IELTS 5.0 Graduate Diploma with Pre-sessional English programme (4 term) | | | | | | | | | | | | | | Master’s degree | | | | | | | | | | |
| | | | | | IELTS 5.5 Graduate Diploma programme (3 term) | | | | | | | | | | | | | | Master’s degree | | | | | | | | | | | |
| | | | | | | | | | IELTS 5.5 Graduate Diploma programme (3 term) | | | | | | | | | | | | | | Master’s degree | | | | | | | |



“I’ve made friends with classmates who I will keep in touch with for the rest of my life. I’m really thankful to INTO for preparing me with essential skills and the knowledge required to undertake my Master’s degree in the UK.”

Ratna Julia Sahlan, Indonesia

2010
Arrived at INTO Queen’s
University Belfast



2011
Completed Graduate
Diploma



2012
Graduated with MBA in
International Business from
Queen’s University Belfast

Graduate Diploma Finance

The programme provides a grounding in subject content, relevant English language and research skills. You will study a combination of modules for a total value of 120 credits. All modules are compulsory on each pathway.

Pathway in Finance (120 credits)

| Core modules | Specialist modules |
|--|--|
| English for Academic Purposes (40 credits) | Accounting for Financial Management (20 credits) |
| | Financial and Economic Strategy (20 credits) |
| | Financial Econometrics (20 credits) |
| | Financial Market Theory and Investment Analysis (20 credits) |

See page 57 for descriptions of core and specialist modules for this pathway.

Key course facts

Start dates

June, September and January

Programme length

3 terms or approximately 9 months
4 terms or approximately 12 months

Class hours

20 hours per week

Age requirement

18 years and above

Academic entry requirements

Pass in an undergraduate degree in any subject from a recognised institution

or

Higher Education Diploma (3-5 years) with acceptable grades in any subject from a recognised institution

English language entry requirement

Graduate Diploma (3 terms):

IELTS 5.5 (with a minimum of 5.0 in all subskills) or equivalent

Graduate Diploma with Pre-sessional English (4 term):

IELTS 5.0 (with a minimum of 5.0 in all subskills) or equivalent

The Centre accepts other Secure English Language Tests (SELT) including Pearson PTE.

For visa purposes, students requiring a Tier 4 visa must have IELTS 5.5 (with a minimum of IELTS 5.5 in all subskills) or equivalent.

If you do not meet the minimum English language requirements you can apply for English for University Study. See page 60 for course details.

Additional requirements

Applicants for the Finance pathway must have previously studied modules in either statistics, mathematics, finance, economics or calculus with good grades.

For further guidance please check with the INTO Admissions Office or your local education counsellor.



For course dates
and prices, see
page 74

Progression to Queen's University Belfast

If you successfully complete the Graduate Diploma and meet the specified grades for entry to your selected degree (as detailed in the table below), you will be guaranteed entry to at least one of the designated Master's programmes at Queen's University Belfast.

If you do not pass all modules at the first sitting, you will be permitted to retake modules to a total value of 40 credits for a maximum of a pass mark.

Progression route for Finance pathway

| Programme title | Degree | EAP requirement | IELTS equivalency | Overall required final grade average for progression in 2015 |
|--|--------|---|---|---|
| Graduate Diploma in Finance | | | | |
| Accounting and Finance | MSc | Grade B with a minimum of grade D in each component | IELTS 6.5 with a minimum of 5.5 in each component | 60% overall in academic modules, with no module score less than 50% |
| Construction and Project Management | MSc | Grade B with a minimum of grade D in each component | IELTS 6.5 with a minimum of 5.5 in each component | 60% overall average, with no academic module score less than 50% |
| Finance | MSc | Grade B with a minimum of grade D in each component | IELTS 6.5 with a minimum of 5.5 in each component | 60% overall in academic modules, with no module score less than 50% |
| International MBA | MBA | Grade B with a minimum of grade D in each component | IELTS 6.5 with a minimum of 5.5 in each component | 60% overall in academic modules, with no module score less than 50% |
| Risk Management and Financial Regulation | MSc | Grade B with a minimum of grade D in each component | IELTS 6.5 with a minimum of 5.5 in each component | 60% overall in academic modules, with no module score less than 50% |

Module descriptions

Detailed descriptions of the core and specialist modules for the Graduate Diploma in Finance are set out below.

Accounting for Financial Management

The module provides an introduction to management and cost accounting and focuses on how accounting information is used to assist short-term and long-term decision-making. The module also covers the analysis and interpretation of financial accounting information and how it can be used to improve financial management in organisations.

English for Academic Purposes

You will develop the four key areas of competence in English - reading, writing, listening and speaking - with a particular emphasis on high-level academic writing skills. The programme will use seminars, tutorials and discussion, written and electronic media and will create opportunities for you to speak publicly and engage in dialogue. You will be formally assessed across all four skills areas.

Financial and Economic Strategy

This module introduces the financial and economic environment in which organisations must operate and provides a knowledge and understanding of the basic conceptual underpinnings and fundamental principles of microeconomics. Studying issues such as demand and supply, market structure and consumer and firm behaviour, the module considers a range of economic policy issues and explores how a market economy works and the role of government within it.

Financial Econometrics

This module provides a grounding in the statistical concepts and methods of data analysis commonly applied in business and finance. There is a strong practical element to the module where you will develop your numeracy skills and learn to apply computer software packages to the estimation and analysis of real data.

Financial Market Theory and Investment Analysis

This module gives you an overview of markets and financial institutions and introduces concepts and techniques in market analysis and behaviours. You will appreciate the importance of corporate governance, and the pivotal role played by the financial manager. The constraints and risks in constructing portfolios to meet investors' financial objectives will be considered and you will learn to evaluate alternative investment opportunities.

Graduate Diploma Management

The programme provides a grounding in subject content, relevant English language and research skills. You will study a combination of modules for a total value of 120 credits. All modules are compulsory on each pathway.

Pathway in Management (120 credits)

| Core modules | Specialist modules |
|--|---|
| English for Academic Purposes (40 credits) | Business in an International Context (20 credits) |
| | Business within the European Union (20 credits) |
| | Empirical Enquiry and Critical Thought (20 credits) |
| | Exploring Culture (20 credits) |

See page 59 for descriptions of core and specialist modules for this pathway.

Key course facts

Start dates

June, September and January

Programme length

3 terms or approximately 9 months
4 terms or approximately 12 months

Class hours

20 hours per week

Age requirement

18 years and above

Academic entry requirements

Pass in an undergraduate degree in any subject from a recognised institution

or

Higher Education Diploma (3-5 years) with acceptable grades in any subject from a recognised institution

English language entry requirement

Graduate Diploma (3 terms):

IELTS 5.5 (with a minimum of 5.0 in all subskills) or equivalent

Graduate Diploma with Pre-sessional English (4 term):

IELTS 5.0 (with a minimum of 5.0 in all subskills) or equivalent

The Centre accepts other Secure English Language Tests (SELT) including Pearson PTE.

For visa purposes, students requiring a Tier 4 visa must have IELTS 5.5 (with a minimum of IELTS 5.5 in all subskills) or equivalent.

If you do not meet the minimum English language requirements you can apply for English for University Study. See page 60 for course details.

Additional requirements

Applicants wishing to progress to the MSc International Business or MSc in Human Resource Management must have an undergraduate degree in Business or Management which is acceptable to Queen's University Management School.

For further guidance please check with the INTO Admissions Office or your local education counsellor.



For course dates
and prices, see
page 74

Progression to Queen's University Belfast

If you successfully complete the Graduate Diploma and meet the specified grades for entry to your selected degree (as detailed in the table below), you will be guaranteed entry to at least one of the designated Master's programmes at Queen's University Belfast.

If you do not pass all modules at the first sitting, you will be permitted to retake modules to a total value of 40 credits for a maximum of a pass mark.

Progression route for Management pathway

| Programme title | Degree | EAP requirement | IELTS equivalency | Overall required final grade average for progression in 2015 |
|---------------------------------------|--------|---|---|---|
| Graduate Diploma in Management | | | | |
| Construction and Project Management | MSc | Grade B with a minimum of grade D in each component | IELTS 6.5 with a minimum of 5.5 in each component | 60% overall average, with no academic module score less than 50% |
| Human Resource Management | MSc | Grade B with a minimum of grade D in each component | IELTS 6.5 with a minimum of 5.5 in each component | 60% overall in academic modules, with no module score less than 50% |
| International Business | MSc | Grade B with a minimum of grade D in each component | IELTS 6.5 with a minimum of 5.5 in each component | 60% overall in academic modules, with no module score less than 50% |
| International MBA | MBA | Grade B with a minimum of grade D in each component | IELTS 6.5 with a minimum of 5.5 in each component | 60% overall in academic modules, with no module score less than 50% |
| Management | MSc | Grade B with a minimum of grade D in each component | IELTS 6.5 with a minimum of 5.5 in each component | 60% overall in academic modules, with no module score less than 50% |
| Marketing | MSc | Grade B with a minimum of grade D in each component | IELTS 6.5 with a minimum of 5.5 in each component | 60% overall in academic modules, with no module score less than 50% |

Module descriptions

Detailed descriptions of the core and specialist modules for the Graduate Diploma in Management are set out below.

Business in an International Context

The module seeks to introduce you to the key factors in the external environment in which businesses in the 21st century operate. The module will concentrate on key external forces, including: political, macroeconomic, sociocultural, technological systems; national and international legal systems; and organisational sustainability. Contemporary trends including internationalisation, globalisation and the multinational enterprise will also be explored.

Business within the European Union

The module will focus on key issues relating to business in a European and global context. Attention will be given to the workings of the European Union and how this impacts on business. You will explore a number of case studies focusing on Northern Ireland (as a region within the UK) and the Republic of Ireland as a means of understanding the development of the European Union and how the European context impacts current and potential future business practices.

Empirical Enquiry and Critical Thought

The aim of the module is to develop your skills to investigate, understand and interpret information as applied in a business and management context. The module has two objectives. Firstly, it introduces you to the philosophical and ethical underpinnings of business and management research (critical thought), as well as to a range of quantitative and qualitative data-collection techniques used therein (empirical enquiry). Secondly, it seeks to help you apply these analysis skills to real-life case problems. This module analyses and evaluates each of the key stages in the research process drawing on an appropriate range of theory.

English for Academic Purposes

You will develop the four key areas of competence in English - reading, writing, listening and speaking - with a particular emphasis on high-level academic writing skills. The programme will use seminars, tutorials and discussion, written and electronic media and will create opportunities for you to speak publicly and engage in dialogue. You will be formally assessed across all four skills areas.

Exploring Culture

The increasingly complex and global nature of businesses today brings many management challenges, not least in relation to understanding the impact of national cultures in an organisational environment. This module provides a broader understanding of the relationship between social and cultural issues such as ethnicity, cultural identity, cultural shock, and cultures colliding as applied to an organisation. The multifaceted nature of culture requires managers to face the challenges that stem from cultural diversity and its implications for the workplace.

English for University Study

English for University Study focuses on academic English and the study skills you need to succeed on your INTO academic programme or university degree.

What is English for University Study?

This is a year-round course of intensive academic English language study designed to prepare you either for entry to a further academic preparation programme at INTO Queen's University Belfast or for entry to your degree at Queen's University Belfast.

You will develop your English language and academic study skills, as well as research skills at higher levels, and with multiple start dates and different durations of study, the course has the flexibility to cater for students with different language levels.

The course suits a range of needs, and will teach you to:

- adapt to university-style teaching
- learn the necessary research skills for university study
- improve your overall English language ability and academic presentation techniques.

What will I study?

You will initially focus on developing core English language skills, developing your knowledge and confidence in reading, writing, listening, speaking and pronunciation, grammar and vocabulary.

After developing your core skills, you will focus on skills relevant to your study, including teamwork, problem solving, critical thinking and time management.

The course comprises 20 hours of taught lessons per week plus one hour of directed private study, which will be supervised by your tutor. In order to make good progress, you are expected to do approximately 20 additional hours of private study outside class, which may include homework, assignments or coursework that will be submitted for assessment, as well as online learning.

Assessment

At the end of each term, your skills and language will be assessed to give a clear indication of your progress. Methods of assessment may include:

- written assignments
- presentations
- research projects
- reading, writing and listening examinations.

Course outcomes

Assuming you have met the academic entry requirements for your chosen programme, achieving the required level on the English for University Study course offers assured progression to the following courses:

- direct entry to an undergraduate or postgraduate degree at Queen's University Belfast
- assured progression to the International Foundation, International Diploma or Graduate Diploma programme.*

* Subject to meeting Tier 4 student visa requirements.

Key course facts

Start dates

September, January, April and June

Course length

1, 2 or 3 terms

Class hours

21 hours per week*

Age requirement

16 years and above

Students aged 16 will be accepted if holding an offer for progression to the International Foundation (subject to meeting the International Foundation age requirement).

English language entry requirement

IELTS 3.0 (with a minimum of 3.0 in writing) or an equivalent

The Centre accepts other Secure English Language Tests (SELT) including Pearson PTE.

For further guidance please check with the INTO Admissions Office or your local education counsellor.

* Please note lessons are one hour including an allowance for class changeover.

Accredited by the



for the teaching of English



For course dates and prices, see page 74



“I have had a great time studying here in Belfast, I have made lots of friends here and my teachers are very friendly. As part of my English course, I have enjoyed class discussions which I feel have really improved my English.”

Aeda Park, South Korea

Pre-sessional English

The Pre-sessional English course provides a short and intensive preparation in academic English for students who are already academically qualified and due to start an undergraduate or postgraduate degree programme at Queen's University Belfast in September 2015.

What is Pre-sessional English?

Pre-sessional English provides high quality Academic English lessons which prepare international students for academic study at Queen's University Belfast.

This course is designed to:

- improve your English language proficiency in the core skills of listening, speaking, reading and writing, within a university context
- focus on subject-related work in your chosen area of study including a written project
- help you to study independently using our extensive online materials.

Who should apply for this course?

This 24-hour per week course is suitable for you if you are academically qualified, hold an offer from Queen's University Belfast, and need to improve your English language level before starting an undergraduate or a postgraduate degree at Queen's University Belfast. The Pre-sessional course runs from July to early September. Your course length will vary depending on your current language level and degree programme requirements.

What is special about this course?

The Pre-sessional course allows you to have intensive English language preparation in a university environment. With highly experienced teachers, there is no better preparation for your next steps.

The course will:

- provide contextual study skills that acclimatise you to the culture of a UK university
- enable you to adjust to the demands, challenges and expectations of UK higher education and culture
- provide you with a short period of time to adapt to living and studying in the UK prior to beginning your academic studies.

Assessment

You will be assessed through a combination of examination and coursework during the course. Methods of assessment will include short written texts, extended essays and presentations. At the end of the course, reading, writing, speaking and listening tests will be completed. There is no formal examination at the end of the four week pre-sessional since students on this course have already met the English language requirement for their degree programme at Queen's University.

Course outcomes

Assuming you have already met the University's academic entry requirements and any other outstanding conditions, achieving the level of performance required in the Pre-sessional English course to fulfil the conditions of your offer will allow you to progress to your university course without needing to retake the IELTS or TOEFL test.

Key course facts

Start dates

June, July and August

Course length

4, 6 or 10 weeks

Class hours

24 hours per week

Maximum class size

16 students

Age requirement

17 years and above

Academic entry requirement

Applicants must hold an offer of a place on a degree programme at Queen's University Belfast.

English language entry requirement

For degree courses that require IELTS 6.5 for direct entry

4 weeks: IELTS 6.5 (with a minimum of 5.5 in any subskill) or equivalent
6 weeks: IELTS 6.0 (with a minimum of 5.5 in any subskill) or equivalent
10 weeks: IELTS 5.5 (with a minimum of 5.0 in any subskill) or equivalent

For degree courses that require IELTS 6.0 for direct entry

4 weeks: IELTS 6.0 (with a minimum of 5.5 in any subskill) or equivalent
6 weeks: IELTS 5.5 (with a minimum of 5.0 in any subskill) or equivalent
10 weeks: IELTS 5.0 (with a minimum of 5.0 in any subskill) or equivalent

Please ensure you consult Queen's University Belfast for details of the English language level required for entry onto your chosen course.

For further guidance please check with the INTO Admissions Office or your local education counsellor.

Accredited by the



for the teaching
of English



For course dates
and prices, see
page 74



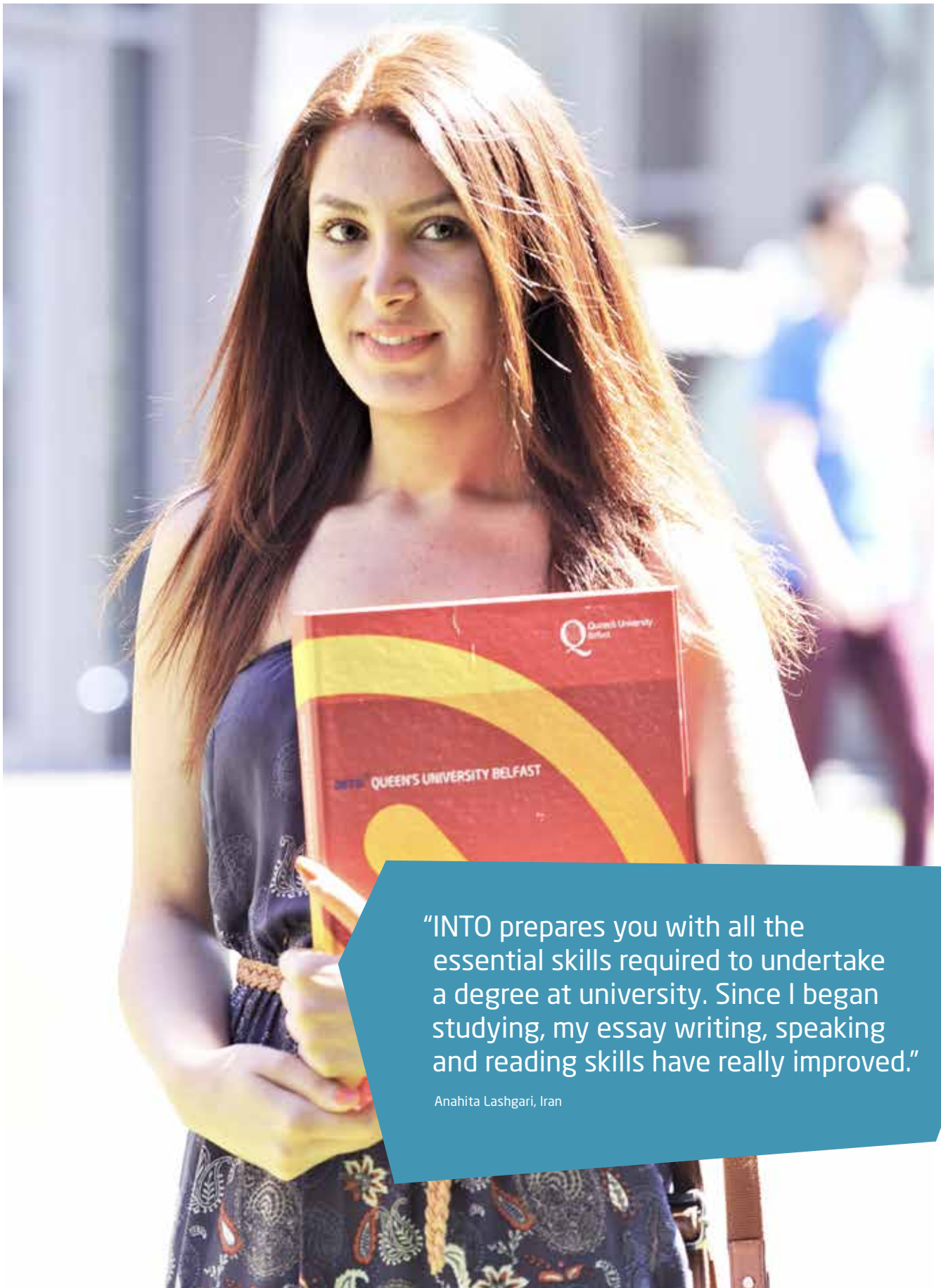
“The Pre-session English course at INTO gave me time to ensure I understood the local accent, and it did not take me very long to adapt to the local language because of the preparation on this course.”

Zijing Lau, China




"I am having a lot of fun studying at INTO Queen's and really look forward to meeting local students in my class when I begin my degree at the School of Engineering. Belfast is a great place - the local people are very friendly here and the other students who are studying at INTO are also welcoming."

Motlaq Almutairi, Kuwait



“INTO prepares you with all the essential skills required to undertake a degree at university. Since I began studying, my essay writing, speaking and reading skills have really improved.”

Anahita Lashgari, Iran



Apply via the forms
in this brochure



Apply online at:
www.intohigher.com/queens/apply



Review of your
application within
two working days

Your application



Successful applicants
receive an offer letter



Success at INTO
Queen's University
Belfast

How to apply

An easy application process to follow from anywhere in the world

Supporting your application

Whether you decide to complete your application with the support of an education counsellor in your home country or apply directly, we offer a simple application process and we will support you every step of the way.

Throughout the process our multilingual Customer Relations Advisers are available to help answer your questions. They can speak a range of languages including English, Mandarin, Cantonese, Arabic, Russian, Spanish, Japanese, Lithuanian, French, Italian, Polish and German.

How do I apply?

You can apply through a local education counsellor. They will help you to complete the application form and send it along with your supporting documentation to our Admissions Office.

You can also apply online:

www.intohigher.com/queens/apply

What documents do I need to include?

- Completed application form, signed by the student or the parent/legal guardian.
- Copy(ies) of relevant academic certificate(s) in English.
- Copy(ies) of English language certificate(s) in English.
- Full details of previous study in the UK.
- A copy of your passport.

What next?

After carefully reviewing the application, if successful, we will send a formal offer of a place. For complete applications, this is usually within two working days.

Once we have received the tuition fee and accommodation deposit (as detailed in the offer letter) and all the conditions of the offer have been met, we will send a Confirmation of Acceptance for Studies (CAS) from Queen's University Belfast, which is needed in order to apply for a Tier 4 (General) visa.

"My role as an admissions adviser involves communicating with students and education counsellors all over the world to assess and assist with applications; this support starts when an initial enquiry is sent and continues until the student arrives in the UK. I love working with such a dynamic and diverse range of people and am dedicated to providing the best service I can."

Naomi Cromby, Admissions Adviser



98%

visa success rate in the UK

INTO[®] QUEEN'S UNIVERSITY BELFAST

You should return your application pack to your local education counsellor or directly to the INTO Admissions Office at least one month before your intended start date.

Please send to: INTO Queen's University Belfast Admissions, One Gloucester Place, Brighton, East Sussex, BN1 4AA, UK
T: +44 1273 876040 | F: +44 1273 328595 | Education counsellors: ukadmissions@into.uk.com | All other enquiries: ukes@into.uk.com

You can also apply online at www.intohigher.com/queens/apply

Education counsellor's stamp

Section 1 Student details (You must complete this section accurately otherwise your visa application may be affected)

| | |
|--|---|
| Title (Mr/Mrs/Ms) | Nationality / citizenship |
| Family name | Do you have or are you applying for permanent residence in the UK? <input type="checkbox"/> Yes <input type="checkbox"/> No |
| Other names | Are you a US citizen or a US permanent resident? <input type="checkbox"/> Yes <input type="checkbox"/> No |
| Gender <input type="checkbox"/> M <input type="checkbox"/> F Date of birth / / (dd/mm/yy) Current age | Do you have dual nationality status? <input type="checkbox"/> Yes <input type="checkbox"/> No |
| What type of visa do you intend to apply for? <input type="checkbox"/> Student Tier 4 visa <input type="checkbox"/> Student visitor visa <input type="checkbox"/> No visa | If yes , please provide full details |
| Name as written on passport | Permanent country of residence |
| Passport number | Student's home address (you must complete this accurately as it may affect your visa) |
| | City |
| | Postcode Country |
| | Student's telephone numbers in country of residence (inc. intl. code) |
| | Tel Mobile telephone |
| | Student's email address |

Section 2 Parent/Spouse/Family member and Sponsor details

| | |
|-------------------------|--|
| Title (Mr/Mrs/Ms) | Postcode Country |
| Family name | Telephone (inc. intl. code) |
| Other names | Email address |
| Relationship to student | How do you intend to fund your studies? |
| Contact address | <input type="checkbox"/> Self <input type="checkbox"/> Family <input type="checkbox"/> Employer* <input type="checkbox"/> Sponsor* |
| City | *Name of employer/sponsor: |

Section 3 INTO course selection

Academic programmes

International Foundation programme

Business, Humanities and Social Sciences Engineering and Science

Please specify start date

Apr 2015 (5 term) Jun 2015 (5 term) Jun 2015 (4 term)
 Sep 2015 (4 term) Sep 2015 (3 term) Jan 2016 (3 term)

International Diploma programme

Engineering Management and Finance

Please specify start date

Apr 2015 (5 term) Jun 2015 (5 term) Jun 2015 (4 term)
 Sep 2015 (4 term) Sep 2015 (3 term) Jan 2016 (3 term)

Graduate Diploma programme

Finance Management

Please specify start date

Sep 2015 (3 term) Jan 2016 (3 term)

Graduate Diploma with Pre-sessional English programme

Finance Management

Please specify start date

Jun 2015 (4 term) Sep 2015 (4 term)

English language courses

English for University Study

Sep 2015 Jan 2016 Apr 2016 Jun 2016

Start date / / End date / / (dd/mm/yy)

Please specify number of terms of English

Pre-sessional English

Jun 2015 (10 weeks) Jul 2015 (6 weeks) Aug 2015 (4 weeks)

Proposed undergraduate or postgraduate programme (Needs to be completed for visa purposes)

Do you intend to study an undergraduate or postgraduate programme after completing your INTO course(s)? Yes No

Proposed degree programme

Section 4 Student's education history

Please give details of your current or most recent school, college or university. Please ensure official institution transcripts, latest available results or forecast results are attached in English.

Institution name _____

Dates of study / / to / / (dd/mm/yy) _____

Date you received (or will receive) your certificate / / (dd/mm/yy) _____

Highest educational qualification name _____

Language of instruction _____

Institution city/town _____

Postcode _____ Country _____

Email address _____

Have you ever studied in the UK? Yes No

If **yes**, please provide full details of study durations. Please also include a copy of your previous visa (must be completed for visa purposes). _____

From / / to / / (dd/mm/yy) _____

Have you ever been refused a visa for the UK? Yes No

Have you ever been refused a visa application to any country? Yes No

If **yes**, please provide full details _____

Section 5 Current English language proficiency

Please tick and enter details of your most recent English language test.
Note: students will be assessed upon arrival and study plans WILL be altered if there is any discrepancy. Please provide a copy of your certificate.

IELTS PTE Other (please specify) _____

Have you arranged to take any other English language test(s) before starting your INTO course? Yes No

Name of exam _____

Date due to be taken / / (dd/mm/yy) _____

Section 6 Welfare

Do you have any conditions, medical or otherwise, that may impact your time in the UK? Yes No

Completion and signing of this form gives INTO permission to administer first aid by trained staff first aiders if required.

Do you consider yourself to have a disability? Yes No

Have you been convicted of a relevant criminal offence? Yes No

If you have answered **yes** to any of the above, please provide full details with your application on a separate sheet.

Travel and medical insurance

The full cost of Uniplan insurance will be added to the invoice unless proof of alternative adequate cover is attached. For full details on insurance packages and prices see page 75 of the brochure.

Please specify what insurance package you would like. Standard Premium

Please state when you would like the insurance to start _____

Start date / / (dd/mm/yy) End date / / (dd/mm/yy) _____

I have my own insurance and enclose a copy _____

Section 7 Accommodation options

INTO accommodation required? Yes No

Please indicate the building and room type you would prefer by ticking 2 boxes below to indicate your 1st and 2nd choice of accommodation.

Please note that INTO aims to provide the highest preference requested but, if this is not available, INTO reserves the right to provide or suggest alternative accommodation.

| | 1st preference: | 2nd preference: |
|--------------------------------------|--------------------------|--------------------------|
| University residential accommodation | <input type="checkbox"/> | <input type="checkbox"/> |
| Homestay | <input type="checkbox"/> | <input type="checkbox"/> |

Do you envisage that you will have any specific requirements in student accommodation as a result of a disability/medical condition? Yes No

Dietary requirements

Please give details of special dietary requirements e.g. halal, vegetarian, no pork, any food allergies.

Section 8 Airport pickup

Flight details including arrival date and flight number should be emailed to ukarrival.details@into.uk.com as soon as possible. All under 18 students **must** either book an INTO airport pickup or provide evidence of alternative arrangements.

Do you require an airport pickup? Yes No

Belfast International Airport (£55) Belfast City Airport (£40)

Section 9 Declaration

I declare that the information I have supplied on and with this form is complete and correct

I have read and understood and agree to abide by the terms and conditions

I agree to abide by the Cancellation and Refund Policy

I agree to pay all tuition and accommodation and sundry expense fees as they become due

I understand that the giving of false or incomplete information may lead to the refusal of my application or cancellation of my enrolment

Student records

I agree that copies of my academic progress and performance reports can be supplied to parents, sponsors or education counsellors without further notification Yes No

I agree that my records and achievements may be used for promotional purposes, without further notification Yes No

Signed _____ Date / / (dd/mm/yy)

(Parent/guardian) For students under 18

Or

Signed _____ Date / / (dd/mm/yy)

(Student)

INTO Giving Support our charity

INTO Giving is our designated charity. It was established to help make a difference to the lives of young people in the developing world by improving their access to education. Each year our staff and students organise and participate in fundraising events. Before you arrive at the Centre you can support one of our educational projects by making a donation of £25. For every donation received INTO will donate a further £25 to INTO Giving. To find out more about INTO Giving please visit www.into-giving.com

I confirm that I would like to make a donation of £25 to INTO Giving and agree for this donation to be added to my invoice / financial statement for payment.



A brighter future for just £25

We're delighted you have chosen INTO Queen's University Belfast and look forward to helping you achieve your dreams.

But did you know there are 57 million children globally not enrolled in school?

Parents everywhere share a desire to give their children the best possible start in life but, sadly, a basic education is still beyond the reach of many young people around the world.

As part of our commitment towards learning, INTO has set up INTO Giving, a charity that helps improve both access to and quality of education for young people living in difficult circumstances.

When children go to school and learn, they create opportunities, transforming and empowering their lives and their community.

Donate £25 and help provide the education they deserve.

On your application form you can opt to donate £25 to INTO Giving and INTO will match your funds, increasing the donation to £50. Every penny you donate will go straight to the INTO Giving educational projects.

For more information visit www.into-giving.com

Help transform lives by supporting our educational projects around the world.

INTO  **GIVING**

One Gloucester Place, Brighton, East Sussex BN1 4AA | T: +44 [0]1273 665200 | F: +44 [0]1273 679422 | E: info@into-giving.com
Charity name: INTO GIVING LIMITED | Charity registration number 1126262 | Company number: 6689824

Important

1. Application of the Terms and Conditions

- These terms and the offer letter (together the "Terms and Conditions") set out the contractual terms which apply between INTO Queen's University Belfast LLP ("INTO Centre" or "INTO") and students ("Students") in relation to the English language courses and/or academic programmes and any other INTO courses (the "Course").
- As such, Students should ensure they read the Terms and Conditions very carefully before signing and submitting their application for admission to the INTO Centre.

2. Application to the Course and Confirmation of Acceptance

- To apply for a place on a Course, Students should complete their application and submit it to the INTO Admissions Office.
- INTO may accept or reject applications in its absolute discretion. If INTO accepts the application, INTO will issue a written offer of a place on a Course to the Student (including any conditions relevant to the offer) (the "Offer Letter") together with an acceptance form for the Student to confirm their acceptance of the offer of the place.
- In order to accept the offer, the Student must:
 - complete and return to INTO the acceptance form confirming acceptance of the offer of the place indicated in the Offer Letter;
 - pay a deposit as described in the Offer Letter which will be used towards the tuition fees due for the Course. The amount of the deposit required will be shown in the Offer Letter; and
 - pay the Uniplan Insurance premium (details of which are set out in this brochure) and submit the completed Uniplan form to INTO or provide proof of an acceptable alternative insurance cover.
- After completion of the actions listed in paragraph 2c above, the contract between the Student and INTO is formed. However, if the offer is 'conditional', the contract shall not come into force unless and until the Student meets the conditions of the Offer Letter and completes the actions listed in paragraph 2c above.

3. Tuition fees and payment

- The balance of the invoice including tuition fees payable for the Course, enrolment fee and any insurance fees (if applicable) payable must be paid to INTO no later than six weeks prior to the start date of the Course (which is stated in the Offer Letter). Details of indicative course dates are included in this brochure.
- The invoice including tuition fees, enrolment fee and insurance fees (if applicable) must be paid in full in pounds sterling by cheque, banker's draft, bank transfer, credit card or debit card.
- If bank, credit or debit card charges are incurred by INTO on such payments, where these charges have been incurred through no fault of INTO, these will be re-invoiced to the Student's account so that INTO receives the payment in full.
- Tuition fee deposits are non-refundable unless the Student is unable to meet visa entry requirements (in which case the Student will be required to provide an official visa rejection letter to INTO – further details of which are set out in section 10 below) or meet conditions of offer (details of which are set out in section 11 below).
- Any variation to standard payment terms will only be made by prior agreement in writing by the Centre Director of the INTO Centre.
- The prices stated in this brochure are valid for confirmed bookings (with payment) received by INTO on or after 01 January 2015 and until further notice. Please contact INTO for further details or visit the website.

4. Other fees

- One to one tuition – Any Students who require 1:1 tuition must agree such tuition with the INTO Centre in advance. English language tuition will be charged at £75 per hour and will be invoiced in advance. One to one for other subjects may be available and charges may vary. For such tuition, the student should speak to the Academic Director in the INTO Centre in the first instance.

5. Overdue fees

- In cases of overdue payment of any of the fees owed by the Student, INTO reserves the right to suspend or cancel tuition and to charge interest on the outstanding balance. Interest will be charged on any outstanding fees at the rate of 2.5% above the base rate of Barclays Bank per month or part thereof from the due date (either six weeks prior to course commencement or date of receipt of visa) until payment.
- INTO reserves the right to withhold any academic results or certificates, if fees are still owed by the Student at the end of their Course.
- Fees remain payable if a 'notice of withdrawal' has not been given in accordance with these Terms and Conditions.

6. Changes to Confirmation of Acceptance for Studies ("CAS")

- INTO will issue a CAS, no more than six months before the Student's first Course start date provided that:
 - the Student's offer is unconditional; and
 - the Student has paid their deposit or full fees as set out in the Offer Letter.
- Before issuing the CAS, INTO will confirm with the Student that the details to be included in the CAS are correct. Once the student has confirmed that the details are correct, INTO will submit the details to the Home Office.
- If the Student requests any changes to the information on the CAS (other than an update to the 'Fees paid to date' information after making further payments) after INTO has submitted the details to the Home Office and a new CAS is required, the Student will be charged for each request at the then prevailing rate. At the time of going to print the cost is £14 but is subject to review by the Home Office.

7. Cancellation charges

- Subject to paragraphs 8 and 9 below, if the Student wishes to cancel their place on the Course prior to the Course commencing, then, unless such cancellation is due to visa refusals, and/or academic and/or English Language conditions on the Student's Offer Letter not being met, the following charges apply:

Academic programmes, English for University Study, and Pre-sessional English Courses

Tuition fee cancellation charges:

Four weeks or more before commencement: cancellation fee of £500
 Less than four weeks before commencement: cancellation fee of £1000
 Cancellation after course commencement: cancellation fee of one term's full fees (excluding Pre-sessional, where full fees apply)

Accommodation fee cancellation charges:

Four weeks or more before commencement: cancellation fee of £500
 Less than four weeks before commencement: cancellation fee of £1000

- Cancellations must be made in writing to the INTO Admissions Office, One Gloucester Place, Brighton, BN1 4AA. Cancellations will become valid on the day the written notice is received by INTO.
- Cancellation charges will be deducted from the deposit and/or tuition fees paid by the Student or, if no deposit and/or tuition fees have been paid by the Student, INTO will invoice the Student for the cancellation charges. Payment shall be due within 30 days of the date of such invoice.
- Cancellation of a Course prior to the start date of the course includes cancellation of any Uniplan Insurance policy. If you cancel your Uniplan Insurance policy either within the 14 day cooling off, or after this period, a charge will be made based on the number of days you have had cover less a cancellation fee of £25.00, unless you have travelled or a claim or an incident likely to give rise to a claim has occurred, in which case no refund will be due. Please note once a student has commenced their Course then no cancellation of the insurance cover is possible and there is no refund due for the Uniplan premium.

8. Leaving a Course early

- If a Student wishes to withdraw from their Course, they must notify the INTO Centre in writing as described above in the section 'Cancellation charges'. Once a student has arrived in the UK and commenced their course in the centre, there will be no refund of fees.
- Accommodation cancellation charges will apply as outlined at paragraph 21 below.

9. Contracts made by distance communication

- If INTO has made its offer for a place on the Course and the offer has been accepted by the Student solely by means of distance communication (i.e. if up to the point when the contract is concluded there has been no face-to-face contact between the Student and INTO or INTO's representative) then the contract between us is a "Distance Contract".
- Students are entitled to cancel a Distance Contract at any time up to the earlier of:
 - 7 days from the date when the Distance Contract is concluded; or
 - the date on which the Student starts the Course.
- In order to cancel the Distance Contract, the Student must inform INTO in writing at the INTO Admissions Office, One Gloucester Place, Brighton, East Sussex, BN1 4AA within the time periods set out in paragraph (b) above.
- If any payment has been made by the Student to INTO under these Terms and Conditions prior to the date of cancellation then a full refund will be provided by INTO using the same payment type as soon as possible but, in any event, within 30 days of receipt of the Student's notification of cancellation.

10. Cancellation or deferral because of Visa refusal/Visa delays

- Students are entitled (provided such refusal / delay is not the result of any fraudulent activity) to cancel or defer a Course due to refusal or non receipt of a necessary visa providing that the Student informs the INTO Admissions Office in writing and sends evidence to INTO of the visa refusal or that the Student advises INTO that they have not yet received the relevant visa from the Embassy as early as possible and in any event no later than two weeks after the Student's proposed Course start date (or one week for English for University Study and Pre-sessional English courses).
- Cancellation charges (except for Uniplan Insurance cancellation fees which will apply as outlined above in paragraph 7d) will not be incurred in the circumstances described in paragraph (a) above provided that the Student complies with the notice requirements set out and any deposit and/or tuition fees already paid will be refunded accordingly. Failure to provide the relevant information in the timescales set out in paragraph (a) will result in normal cancellation charges applying as set out in paragraph 7 and no fees already paid will be refunded.
- If the visa refusal states that the visa has been refused due to any type of fraudulent activity by (or with the approval of) the Student then, notwithstanding paragraph 10b, the Student shall be liable for full deposit which will become non-refundable and the total of all claims, damages, losses (including consequential and indirect losses) and expenses incurred as a result of such fraud and the need to comply with any associated internal or external investigation.

11. Cancellation because conditions of offer are not met

- If INTO's offer to the Student is conditional upon the Student meeting the requirements set out in the Offer Letter, INTO reserves the right to withdraw its offer to the Student if the requirements of the Offer Letter are not met.
- If a Student does not meet the conditions of the Offer Letter (Academic or English language), provided that the Student informs INTO in writing and sends evidence that the conditions have not been met as early as possible but at least four weeks before the Course start date, no cancellation charges will be payable by the Student to INTO. This information must arrive at the INTO Admissions Office in the UK no later than four weeks before the Course start date or the day after the Student's exam results are published (if this falls after the four week cut off point). If INTO receives the relevant information (including evidence of the date of publication of the results if this falls after the four week cut off point) within the timelines outlined above, any deposits/fees already paid (minus the Uniplan Insurance cancellation fees as outlined above in paragraph 7d) will be refunded by INTO to the Student. Failure to do this will result in normal cancellation charges applying (as set out above) and no fees will be refunded.

12. Deferrals

- A Student may defer the start of a Course if the Student has been prevented by external events from starting the Course, up to a maximum of two occasions. An external event includes (without limitation) serious illness or injury of the Student or of a close member of the Student's family.
- Students must ensure that any request to defer is accompanied by a full explanation of the reasons for the request, is presented in writing and reaches the INTO Admissions Office in the UK at least six weeks before the Course start date. If INTO receives the request after this date, normal cancellation charges will apply (see the 'Cancellation charges' section above). The request should also include details of the Student's preferred new start date for the Course.
- All deferrals are subject to the availability of the requested chosen new Course start date at the time INTO receives the Student's request to defer.
- Any further requests in excess of the two occasions referred to above will be considered by the INTO Admissions Office on a case-by-case basis and acceptance of a deferral request will be at the INTO Admissions Office's sole discretion.
- On the basis that a new CAS will need to be issued if a request to defer is successful, the Student will be charged the fee in respect of the new CAS (as described in paragraph 6c above).
- Student accommodation will need to be re-booked and is subject to availability.
- If the reason for deferral is due to visa refusal, the provisions set out under section 10 above shall apply.

13. Academic criteria and attendance

- Students are accepted onto the Course on the strict understanding that progression through the Course and successful completion of the Course are conditional upon satisfactory attendance and successful attainment of specified progression grades.
- Students are accepted onto the Course on the strict understanding that they attend all classes. By signing the application form, the Student accepts that if they fail to attend classes without good reason, or without the permission of the Programme Manager for the Course or a member of the Centre Senior Management Team, they may be deemed to have withdrawn or be required to leave the Course. In the case of students studying on a Tier 4 visa, the Centre may also report the situation to the Home Office.
- During the Course induction all Students will be made aware of the criteria for successful completion of the Course. The assessment of student performance may take into consideration coursework, internal centre examination results, attendance, effort in class and homework.
- Students who do not meet the academic and/or any other attainment criteria for successful completion will not be allowed to proceed with their intended study plan. In such cases, Students will be offered advice on suitable alternative study options.
- Students who do not meet the attainment criteria for progression from an English language programme, or who are identified at being at serious risk of not meeting the attainment criteria for progression from an English language programme, to their intended Course of study (including Extended courses) will be offered advice on alternative study plans which may include further study on the English language Course. In some cases, an alternative study plan may involve additional time and expenditure with regard to tuition and accommodation fees.

14. English language admissions criteria

- Offers are made to Students for both English language and academic Courses on the basis of the certification provided by the Students that they meet the admissions criteria. If, however, the results from the tests and assessment procedures on arrival provide clear evidence that a Student's actual level of English language proficiency is significantly lower than claimed and lower than that required for their designated Course or for visa entry purposes, then the Student will be formally advised of the results and of their options.
- Where 14a applies, Students will not be allowed to proceed with their original Course and will be advised as to possible alternatives. Such alternatives may include:
 - an alternative study plan which may involve additional time and expenditure up to £1,000 with regard to tuition and further accommodation fees; or
 - if the English Language level is below the level for visa entry purposes then the Student will have to return home.

15. Behaviour, welfare and attendance

- By signing the application form, the Student consents to INTO requesting and receiving any relevant information from any University school, service or centre concerning the Student's behaviour, welfare and attendance, and to allow the efficient operation of the Centre.
- If the Student has welfare and/or pastoral problems or concerns, the Student should in the first instance refer to the INTO Student Handbook or contact the Head of Student Services or the Student Services team.
- By signing the application form the Student agrees to adhere to the INTO Centre Code of Practice.

16. Class times and sizes

- For all Courses, classes will normally be held Monday to Friday between the hours of 08:00 and 19:00 but INTO reserves the right to hold classes outside of these times.
- The maximum class size is normally 20 students for English for University Study and English language modules on academic Courses. However, where appropriate, classes may be combined for university style lectures.
- Lessons will take place in the form of classes, seminars, workshops and lectures. Academic subject class sizes will vary depending on the learning format (e.g. lecture, seminar, lab practicals).
- Examinations may be held in the evening, on weekends and public holidays, and at venues outside of the main centre.

17. Holidays

- No regular classes will take place at INTO on recognised UK public holidays
- No refunds will be made for classes not taking place on these dates.
- On occasion examinations may be held on these dates. Term dates relevant to individual Courses are published in this brochure and no classes will take place outside these dates.

18. Arrivals

- Students must arrive in the UK on the Saturday or Sunday before the Course start date and register and enrol at the Centre on the published start date.
- Late arrivals – INTO expects all Students to arrive and start their Course on the scheduled start date. However, INTO recognises that Students are sometimes delayed for unavoidable reasons (these would include, for example, cancellation of, or delays to, flights or other transport). In exceptional cases, the INTO Centre will allow Students to arrive up to two weeks after the published start date for academic Courses and up to one week late on English language Courses. Unavoidable late arrivals must be approved in advance by the Head of Admissions of INTO as soon as the Student becomes aware that he or she will not arrive in time for the scheduled start date.
- Students on Pre-sessional courses MAY NOT arrive late.
- If, due to late arrival, a new CAS has to be issued, there will be a charge for the issuing of the new CAS (as set out in paragraph 6c above).
- No discount or refund of fees will be given for late arrivals.

19. Accommodation

- At the time of application to the Course, Students are invited to select their preferred accommodation. INTO aims to provide the accommodation as requested but, if this is not available, INTO reserves the right to provide an alternative type of accommodation. This will be charged at the published rate for such accommodation as set out on the fees page within this brochure.
- Accommodation is allocated as per the instructions on the application form and upon receipt of the signed copy of the student's acceptance form and payment of the appropriate accommodation deposit (as evidenced by the Student's invoice). Under 18s are required to stay in INTO accommodation unless full details have been provided of alternative living arrangements with a named adult over the age of 21.
- Students will be sent a copy of the accommodation terms and conditions with their offer letter and are required to agree to them when returning the acceptance form.
- The accommodation deposit is described in the Offer Letter. Accommodation is guaranteed once the deposit has been paid, the student has returned a ticked and signed Acceptance Form, and the Student has received confirmation that the type of room they have requested is available.

- e. INTO accommodation is only available to Students who are registered on full-time INTO Courses.
- f. Accommodation is not available to family members of Students (unless they are also registered on full-time Courses at INTO).
- g. INTO advises Students to insure their personal belongings. INTO shall have no liability for any loss, theft and/or damage to Students' personal belongings. INTO can provide details of insurance policies on request.
- h. Where a Course spans a holiday period accommodation fees will still be charged for those periods.
- i. Damage and sundry expenses deposit – All Students will be required to pay a damage and sundry expenses deposit of £500 which will be invoiced at the time of booking their course and shall be payable at least six weeks prior to the start date of the Course. Such deposit is refundable at the end of the Course minus any costs not already paid in Centre for any damages, exceptional cleaning or fines which have been incurred either to the residential/homestay accommodation or the premises and/or facilities which are discovered during occupancy or once an inspection has taken place after the Student's departure. The INTO Centre will repay any monies owing within 60 days of the Student's final Course end date.
- j. The damage and sundry expenses deposit is to cover outstanding damages and repairs once the Student has vacated the property and/or any fines or damage charges incurred during the study period remaining unpaid at the time of the Student's departure.
- k. Breakages – Students are responsible for payment of any damage caused by them to property owned or occupied by the University (where applicable) or the INTO Centre. Students in residential accommodation may be required to sign an inventory on arrival and departure. The INTO Centre reserves the right to recover costs for damage or exceptional cleaning from Students. Any damage which requires repairs and/or exceptional cleaning which occurs whilst the Student is living in the property or is required following the Student's departure will be charged to the Student separately at the going rate. Any damage discovered during the student's stay will be invoiced at that time and payment will be due immediately. Charges for damage discovered after departure will be deducted from the deposit payable by the Student as set out in paragraph 19i above. If the amount due is in excess of the deposit paid by the Student, INTO will invoice the Student for the excess amount. The Student shall pay any such amounts to INTO within 30 days of the date of the invoice.

20. Accommodation fees

- a. All accommodation fees for the entire duration of the accommodation booked must be paid in full in pounds sterling by cheque, banker's draft, bank transfer, credit or debit card at least six weeks prior to the start date of the Course. If bank, credit or debit card charges are incurred by INTO on such payments, where these charges have been incurred through no fault of INTO, these will be re-invoiced to the Student's account so that INTO receives the payment in full.

21. Accommodation changes or cancellation when a Student has arrived and moved into their Accommodation

- a. Residential/homestay accommodation – In all cases except visa refusals, Students who wish to cancel their accommodation booking will be subject to the cancellation fees as set out in the copy of the accommodation terms and conditions they will have received with their Offer Letter.
- b. Students are bound by the terms and conditions of their accommodation contract upon the signing of the accommodation contract or once the Student arrives and moves into the residential/homestay accommodation whichever is the earlier.
- c. Full accommodation charges will apply during any notice period as outlined in the accommodation contract. No change to the type of accommodation arrangements will be made without the written permission of the Head of Student Services or the Centre Director. This permission will only be given in exceptional circumstances. If a Student makes a change to his/her accommodation arrangements or leaves accommodation provided by INTO without the prior written consent of the Centre Director, the Student shall remain liable for the full accommodation payments invoiced or reserved at the time of confirmation.
- d. A Student under the age of 18 may only move to agreed alternative private accommodation where the Student's parent or guardian have certified to INTO that this is the case and that the provision of accommodation by INTO is no longer required. For the avoidance of doubt the Student shall remain liable for the full accommodation payments invoiced or reserved at the time of confirmation in respect of the vacated property.
- e. Residential accommodation may not be available over the two week Christmas period to Students who are under 18 years old. The INTO Centre can assist with alternative arrangements which may incur an additional charge.

22. Airport pickups

- a. Airport pickups may be booked as specified earlier in this brochure. The airport pickup will be for the passenger named on the application form only or for named Students if Students agree in advance (and notify INTO) that they wish to share an airport pickup.
- b. Additional family members or chaperones accompanying the named passenger will be charged additional fees.
- c. The first 30 minutes of waiting time is included in the fee as specified in this brochure. Additional fees may apply for waiting periods longer than 30 minutes.
- d. Fees will only be refunded for 'missed pickups' if the Student informs INTO, by telephoning the INTO emergency telephone number (as publicised in the pre-departure guide), that their pickup will not be required or that they will be delayed before they leave the departure airport, or if they have arrived at their destination airport and the transfer is a no show, they telephone the INTO emergency telephone number (as publicised in the pre-departure guide), that their transfer is a no show before they leave the arrival airport.
- e. Airport transfer fees must be paid for at least 6 weeks prior to the course start date.
- f. Airport pickups are compulsory for students under 18, unless parents provide INTO with evidence that they have made alternative arrangements for the collection of their child from the UK entry airport. A similar compulsory delivery of students under 18 to their departure airport applies.

23. Travel to the INTO Centre

- a. INTO expects Students to assist INTO with its Green Travel Plan, as may be reasonably required.
- b. Students may not bring cars to campus unless otherwise agreed in advance by INTO. Please contact INTO for further details of our Green Travel Plan.

24. Record keeping duties under TIER 4 Immigration rules (PBS)

- a. INTO is required to keep a copy of Students' passport, identity card for foreign nationals or United Kingdom immigration status documents and Students' UK contact details.
- b. Under the TIER 4 Immigration rules (PBS) the sponsor licence holder will report to the Home Office in the following circumstances:
 - i. if the Student fails to enrol on the Course within the enrolment period;
 - ii. if the sponsor licence holder stops being the Student's immigration sponsor for any other reason, for example, if the Student is withdrawn or moves into an immigration category that does not need an approved education provider;
 - iii. if there are any significant changes in the Student's circumstances, for example, if the length of a course of study becomes shorter; or
 - iv. if INTO has any suspicions that the Student is breaking any conditions attached to their permission.

25. Medical treatment and accident insurance

- a. Acceptance by the Student (or by his/her parent or legal guardian if the Student is under 18), of a place to study at the INTO Centre indicates that the Student (or parent/legal guardian if the Student is under 18):
 - i. gives permission for the administration of first aid and appropriate non-prescription medication to the Student if required; and
 - ii. if the Student is under 18, for INTO to recommend that the Student seeks medical, dental or optical treatment when required.
- b. All Students must maintain a valid and comprehensive medical and accident insurance policy for the duration of their stay. Students unable to provide evidence of adequate cover at the time of their application are required to take up the Uniplan Insurance cover as a condition of enrolment.

26. Students who are under 18

- a. INTO strongly recommends that parents appoint a UK based guardian for international Students under 18 years of age.
- b. If parents are making their own arrangements for either guardianship services or a friend or family member in the UK to act as guardian to the Student, then evidence of these guardianship arrangements and contact details thereof must be supplied at time of confirmation.
- c. Parents of Students under 18 must sign a consent form authorising nominated INTO staff to act (on behalf of the parent) in the case of an emergency. They must also complete a medical information form. The forms will be included with the INTO offer documents and must be completed and returned to INTO at the confirmation stage. Confirmation documents will not be issued unless these forms are returned. Failure to return these forms could result in a Certificate of Acceptance for Studies not being issued.
- d. In the case of Students under 18, any reference in these Terms and Conditions to liability of Students shall also infer liability on the parents or guardian of the Student and such liability is joint and several.

27. Student information

- a. Students agree that copies of their regular reports on their academic progress and performance can be supplied to parents, sponsors or agents without notification, by completing the student record section of the application form.
- b. Students agree that if INTO has serious concerns about their welfare, INTO can contact their parents or family members without notification. Consent is hereby given by the Student to the above until formally withdrawn in writing.
- c. Students and, if the Student is under 18, the Student's parents/guardians/sponsors hereby consent that the Student's records and achievements, images and sound may be used for promotional purposes, by completing the student record section of the application form.
- d. INTO is obliged to report visa status, attendance records and UK contact details to relevant UK government bodies and will do so in accordance with its legal obligations under relevant legislation (including under the Data Protection Act 1998).
- e. INTO may disclose information about the Student for the purposes of (without limitation):
 - i. the administration of justice;
 - ii. the exercise of any functions of either House of Parliament;
 - iii. the exercise of any functions conferred on any person by or under any enactment;
 - iv. the exercise of any functions of the Crown, a Minister of the Crown or a government department; and/or
 - v. the exercise of any other functions of a public nature exercised in the public interest by any person i.e. necessary for legitimate purposes and justified by the Data Protection Act.
- f. INTO will process personal information provided to it by Students in accordance with the Data Protection Act 1998 and any other applicable data protection legislation. For further information about how INTO handles and uses personal data please see INTO's Privacy Policy which can be viewed at www.intohigher.com/uk/en-gb/footer/legal-and-privacy.aspx.
- g. INTO will only use the personal information provided to it by Students in order to provide and administer the course. Please note that personal data may be shared between INTO and the university partner where applicable, as necessary in order to provide and administer the course. Any personal data shared is in accordance with the Data Protection Act 1998 and with any other applicable data protection legislation. Students acknowledge and agree that by providing their personal details, INTO may also pass their personal data to external agencies or other selected third parties for the purposes of seeking participation in student surveys, undertaking academic audits or ensuring compliance with INTO's regulatory responsibilities.

28. Liability

- a. Subject to the following, INTO (including its staff and/or representatives) shall have no liability to the Student for any loss, damage, costs or expenses arising under or in connection with these Terms and Conditions except where such loss or damage is directly caused by INTO (or its staff or representatives).
- b. Where such loss or damage is directly caused by INTO (or its staff or representatives), INTO's liability shall, subject to the following, be limited to 150% of all fees paid or payable by the Student to INTO.
- c. Nothing in these Terms and Conditions shall exclude or restrict INTO's liability for death or personal injury resulting from its negligence or fraudulent misrepresentation or in any other circumstances where liability may not be so limited under any applicable law.
- d. INTO shall have no liability for failure or delay to supply the Course and/or any service contemplated by these Terms and Conditions due to circumstances beyond its reasonable control.

29. Disclaimer

- a. This brochure is prepared in advance of the academic year to which it relates. The information is correct at the time of going to press and the Courses and services described herein are those which INTO is planning to offer. However, INTO reserves the right, to amend, add or remove any Course and/or services set out in this brochure and/or the timetable, delivery, content syllabus and assessment of such Courses. The University (where applicable) also reserves the right to amend the regulations governing those Courses without prior notice. INTO therefore strongly recommends that immediately prior to making any application to INTO or accepting any offer from INTO, Students should refer to the most up-to-date version of the Course descriptions and specifications and the regulations on the INTO website.
- b. INTO also reserves the right to make variations to the contents and methods of delivery of the Courses and services, to discontinue, Courses and services, and to combine and merge Courses, if such action is reasonably considered to be necessary by INTO.
- c. Applicants to INTO Courses will be notified as soon as practicable of any material changes likely to have a bearing on their application, such as cancellation of, or major modification to Courses offered, changes to accommodation provision or fees and charges to be levied by the university partner where applicable.
- d. INTO, in marketing its Courses, aims to comply with the British Code of Advertising Practice issued by the Advertising Standards Authority, e. Applications to universities for undergraduate or postgraduate courses are governed solely by the applicable terms and conditions of that university, and not by these Terms and Conditions.

30. Equal opportunities

- a. INTO operates an equal opportunities admissions policy. It aims to ensure that no applicant will receive less favourable treatment on the grounds of age, sex, marital status, race, colour, nationality, ethnic origin, sexual orientation, or political or religious belief.
- b. INTO welcomes applications from candidates with disabilities.

31. Entire agreement

- a. These Terms and Conditions and the Offer Letter constitute the entire agreement between INTO and the Student for the provision of English language Courses and/or academic Courses and any other INTO Course.
- b. These Terms and Conditions supersede any promises, representations, warranties – whether written or oral – made by or on behalf of one party to the other.

32. Changes to these Terms and Conditions

- a. INTO reserves the right to vary these Terms and Conditions without the consent of the Student at any time prior to entering into a contract with the Student. In such circumstances, INTO will provide a revised set of Terms and Conditions.

33. Transfer of these Terms and Conditions

- a. INTO may assign, transfer, or sub-contract in whole or in part some or all of the benefit and/or burden of these Terms and Conditions.

34. Severance

- a. If any court or competent authority finds that any provision of these Terms and Conditions (or part of any provision) are invalid, illegal or unenforceable, that provision or part-provision shall, to the extent required, be deemed to be deleted, and the validity and enforceability of the other provisions of these Terms and Conditions shall not be affected.

35. Governing law and jurisdiction

- a. The formation, existence, construction, performance, validity and any dispute (including non-contractual disputes) arising out of or in connection with the subject matter or formation of these Terms and Conditions shall be governed by and construed in accordance with English law.
- b. The English Courts will have exclusive jurisdiction to settle any disputes (including any non-contractual disputes), which may arise out of or in connection with these Terms and Conditions. Students and INTO agree to submit to the exclusive jurisdiction of the English Courts.

36. Other fees

- a. Textbooks – Textbooks and/or appropriate Course materials will be supplied to Students on enrolment for International Foundation, International Diploma, Graduate Diploma, English for University Study or Pre-session English Course. Students will be invoiced for the textbooks and/or appropriate Course materials immediately following receipt by INTO of the Student's acceptance of the offer of a place on the Course and such invoice is payable at least six weeks before the start date of the Course. The approximate cost of textbooks and/or appropriate Course materials will be £260 per academic Course (3 term), £340 per academic course (4 term), £420 per academic course (5 term) and £80 per term for the English for University Study and for Pre-session English course, £80 for the 10, 6 and 4 week courses.
- b. Laboratory fees – Students who are enrolled on science-based academic Courses (i.e. International Foundation in Engineering and Science, International Diploma in Engineering) shall be charged an additional fee of £370 per academic year to cover the use of laboratory facilities. This fee will be invoiced to the Student immediately following receipt by INTO of the Student's acceptance of the offer of a place on the Course and such invoice is payable at least six weeks before the start date of the Course.

37. University placement and progression

- a. Students who pass the INTO Foundation but do not meet the criteria for progression onto a further study at Queen's University Belfast may, at INTO's sole discretion receive a refund of all tuition fees paid if, having complied with INTO's staff advice with regard to their university application, they have not been offered a place at a UK university on a course appropriate to their qualification.
- b. Students who successfully complete the INTO Foundation, Diploma or Graduate Diploma and who meet the individual entry requirements of Queen's University Belfast for their chosen degree will be permitted to progress onto their course provided they have received a conditional offer and met the terms of that offer and any other University entry requirements.

This information is available in different formats. Please contact the Centre to request a copy.

Dates and prices

International Foundation/ International Diploma/ Graduate Diploma

| Dates | Tuition price | |
|---------------------------------|---------------|---------|
| April start (5 term)* | 5 term | £22,615 |
| Mon 13 Apr 2015–Fri 19 Jun 2015 | 4 term | £18,440 |
| Mon 29 Jun 2015–Fri 04 Sep 2015 | 3 term | £14,265 |
| Mon 21 Sep 2015–Fri 18 Dec 2015 | | |
| Mon 04 Jan 2016–Fri 18 Mar 2016 | | |
| Mon 04 Apr 2016–Fri 10 Jun 2016 | | |
| June start (5 term)* | | |
| Mon 29 Jun 2015–Fri 04 Sep 2015 | | |
| Mon 21 Sep 2015–Fri 18 Dec 2015 | | |
| Mon 04 Jan 2016–Fri 18 Mar 2016 | | |
| Mon 04 Apr 2016–Fri 10 Jun 2016 | | |
| Mon 13 Jun 2016–Fri 26 Aug 2016 | | |
| June start (4 term) | | |
| Mon 29 Jun 2015–Fri 04 Sep 2015 | | |
| Mon 21 Sep 2015–Fri 18 Dec 2015 | | |
| Mon 04 Jan 2016–Fri 18 Mar 2016 | | |
| Mon 04 Apr 2016–Fri 10 Jun 2016 | | |
| September start (4 term) | | |
| Mon 21 Sep 2015–Fri 04 Dec 2015 | | |
| Mon 11 Jan 2016–Fri 18 Mar 2016 | | |
| Mon 04 Apr 2016–Fri 10 Jun 2016 | | |
| Mon 13 Jun 2016–Fri 26 Aug 2016 | | |
| September start (3 term) | | |
| Mon 21 Sep 2015–Fri 18 Dec 2015 | | |
| Mon 04 Jan 2016–Fri 18 Mar 2016 | | |
| Mon 04 Apr 2016–Fri 10 Jun 2016 | | |
| January start (3 term) | | |
| Mon 11 Jan 2016–Fri 18 Mar 2016 | | |
| Mon 04 Apr 2016–Fri 10 Jun 2016 | | |
| Mon 13 Jun 2016–Fri 26 Aug 2016 | | |

* The 5 term option is not available for the Graduate Diploma.

Accommodation prices - International Foundation/International Diploma/ Graduate Diploma

| Start dates | Halls of Residence | Homestay |
|---------------------------------|--------------------|----------|
| April start (5 term)* | £8,120 | £8,730 |
| June start (5 term)* | £8,175 | £8,785 |
| June start (4 term) | £6,690 | £7,190 |
| September start (4 term) | £6,615 | £7,105 |
| September start (3 term) | £5,130 | £5,510 |
| January start (3 term) | £4,455 | £4,785 |

* The 5 term option is not available for the Graduate Diploma.

English for University Study

| Course term dates | Tuition price |
|---|-----------------|
| September start Mon 21 Sep 2015–Fri 04 Dec 2015 | Per term £4,175 |
| January start Mon 11 Jan 2016–Fri 18 Mar 2016 | |
| April start Mon 11 Apr 2016–Fri 17 Jun 2016 | |
| June start Mon 27 Jun 2016–Fri 02 Sep 2016 | |

Accommodation prices

- English for University Study

| Start dates | Halls of Residence |
|---|--------------------|
| September start (per term) | £1,485 |
| January, April and June start (per term) | £1,350 |

Pre-sessional English

| Course term dates | Tuition price | |
|--|---------------|--------|
| 2015 | 2015 | |
| 10 weeks: Mon 29 Jun 2015–Fri 04 Sep 2015 | 10 weeks: | £3,250 |
| 6 weeks: Mon 27 Jul 2015–Fri 04 Sep 2015 | 6 weeks: | £1,950 |
| 4 weeks: Mon 10 Aug 2015–Fri 04 Sep 2015 | 4 weeks: | £1,325 |

Accommodation prices

- Pre-sessional English

| Start dates | Halls of Residence |
|-----------------|--------------------|
| 10 weeks | £1,300 |
| 6 weeks | £780 |
| 4 weeks | £520 |

English language courses - accommodation notes

The prices for both residential and homestay accommodation cover tuition periods only. If your course or study plan spans a vacation period, the accommodation must be paid for during the vacation period as well. Homestay accommodation is only available during vacations by special request and is not guaranteed. A supplement may be payable over the two-week Christmas period. If you wish to leave your belongings with the host family during a vacation period, the full weekly amount will be payable. Please see the terms and conditions on page 73 of this brochure for information regarding the availability of residential accommodation over the Christmas period for under 18 students.

Weekly accommodation prices

| | Prices until Fri 18 Sep 2015 | Prices from Sat 19 Sep 2015 |
|----------------------------------|------------------------------------|-----------------------------------|
| Residential accommodation | | |
| Single en suite study bedroom | £130 per week | £135 per week |
| Homestay | | |
| Standard homestay | £140 per week | £145 per week |

Notes

Prices are valid for all bookings confirmed and paid for after **01 January 2015**, until further notice.

Other fees

| Airport pickup | |
|--|-------|
| Airport | Price |
| Belfast International | £55 |
| Belfast City | £40 |
| Course-related fees | |
| Enrolment fee* | £150 |
| Textbooks (3 term) | £260 |
| Textbooks (4 term) | £340 |
| Textbooks (5 term) | £420 |
| Textbooks (International Diploma in Engineering) | £370 |
| Textbooks (English for University Study) | £80 |
| Textbooks (10-week Pre-sessional English) | £80 |
| Textbooks (6-week Pre-sessional English) | £80 |
| Lab fee (science-based courses) | £370 |

* Per academic programme, charged upon confirmation. Please see clause 36 of the terms and conditions on page 73 for further details of course-related fees.

Public holidays

| 2015 | 2016 |
|--|---|
| New Year holiday Thu 01 Jan 2015 | New Year holiday Fri 01 Jan 2016 |
| St Patrick's Day Tue 17 Mar 2015 | St Patrick's Day Thu 17 Mar 2016 |
| Good Friday Fri 03 Apr 2015 | Good Friday Fri 25 Mar 2016 |
| Easter bank holiday Mon 06 Apr 2015 | Easter bank holiday Mon 28 Mar 2016 |
| May Day holiday Mon 04 May 2015 | May Day holiday Mon 02 May 2016 |
| July holidays Mon 13 Jul 2015 Tue 14 Jul 2015 | July Holidays Tue 12 Jul 2016 Wed 13 Jul 2016 |
| Christmas Day Fri 25 Dec 2015 | Boxing Day Mon 26 Dec 2016 (substitute day) |
| Boxing Day Mon 28 Dec 2015 (substitute day) | Christmas Day Tue 27 Dec 2016 (substitute day) |

Uniplan Insurance

Uniplan Insurance is a comprehensive insurance policy prepared especially for international students in the UK to cover loss of personal possessions as well as travel, health and medical claims. Full travel, health and medical insurance is mandatory for all INTO Queen's University Belfast students, and Uniplan Insurance will automatically be added to your course fees unless you show that suitable alternative cover has been provided.

INTO is an appointed representative of Endsleigh Insurance Services Ltd which is authorised and regulated by the Financial Conduct Authority. This can be checked on the Financial Services Register by visiting its website at www.fca.org.uk/register/

| Period of cover | Cost Standard | Cost Premium |
|-----------------|---------------|--------------|
| Up to 1 month | £66.40 | £73.04 |
| Up to 6 weeks | £77.51 | £85.26 |
| Up to 2 months | £88.62 | £97.47 |
| Up to 3 months | £121.99 | £134.18 |
| Up to 4 months | £144.25 | £158.66 |
| Up to 5 months | £173.15 | £190.45 |
| Up to 6 months | £195.36 | £214.88 |
| Up to 12 months | £356.95 | £392.65 |
| Up to 13 months | £384.41 | £422.85 |
| Up to 18 months | £465.82 | £512.40 |
| Up to 24 months | £528.29 | £581.11 |

Cover

| Item | Maximum sum insured Standard | Maximum sum insured Premium |
|---|------------------------------|-----------------------------|
| All medical emergencies expenses (including repatriation) | £2,000,000 | £2,000,000 |
| Emergency dental treatment | £500 | £500 |
| Funeral costs in the UK | £5,000 | £5,000 |
| Family travel cost to the UK in event of death | £3,000 | £3,000 |
| Personal total disablement | £25,000 | £25,000 |

| Item | Maximum sum insured Standard | Maximum sum insured Premium |
|--|------------------------------|-----------------------------|
| Luggage | £1,000 | £1,000 |
| Passport, tickets and passes | £500 | £500 |
| Personal money | £100 | £100 |
| Single article limit | £200 | £1,000 |
| Valuables total | £300 | £1,000 |
| Personal liability | £1,000,000 | £1,000,000 |
| Overseas legal expenses and assistance | £10,000 | £10,000 |
| Course fees | Up to £14,000 | Up to £14,000 |
| Cancellation or curtailment charges | £3,000 | £3,000 |
| Excess | £50 | £50 |

Principal exclusions

General

The first £50 of each and every claim per incident made by each insured person except for claims under personal liability, personal accident and legal expenses where no excess applies. This policy is not available to anyone aged 65 or over.

Cancellation or curtailment charges and course fees

Any circumstances known prior to booking the trip that could reasonably be expected to give rise to a claim.

Emergency medical and other expenses

Treatment or surgery which in the opinion of the medical practitioner in attendance can wait until your return home. Medication, which prior to departure is known to be required.

Baggage and personal money, passport and documents

Valuables left unattended at any time unless in a safety deposit box or in your locked accommodation. Personal money or your passport if left unattended at any time unless in a safe, a safety deposit box or in your locked accommodation.

Want to find out more?

If you would like to find out more about any of our courses or services, please visit our website. You can also contact the Centre via email or phone, or visit one of our education counsellors in your home country.

Enquiries and applications

**INTO Queen's University
Belfast Admissions**
One Gloucester Place
Brighton
East Sussex
BN1 4AA
United Kingdom

T: +44 1273 876040

Education counsellors
E: ukadmissions@into.uk.com
All other enquiries
E: ukes@into.uk.com

Centre contact details

INTO Queen's University Belfast
Queen's University Belfast
2-8 Lennoxvale
Belfast
BT9 5BY
Northern Ireland
United Kingdom

T: +44 28 9097 6850
E: into@qub.ac.uk



www.intohigher.com/queens



www.facebook.com/intoqueensuniversitybelfast



www.twitter.com/into_queens



www.myin.to/intoqubvideos



Download the mobile app at:
www.intohigher.com/queens/app



www.instagram.com/intoqueensbelfast

© INTO Queen's University Belfast, August 2014. All content published in this document is believed accurate at time of publication. INTO reserves the right to alter details of all aspects of its operation without notice.

IUP 2 LLP is a limited liability partnership registered in England and Wales, registered number OC376452. Registered office: One Gloucester Place, Brighton, East Sussex, BN1 4AA, UK.

Education provider sponsor number 25N2W99V3

INTO 
the global education partners

Through innovative partnerships with leading universities, we expand opportunities for higher education, ensuring success and transforming the lives of our students and staff.

Education counsellor's stamp